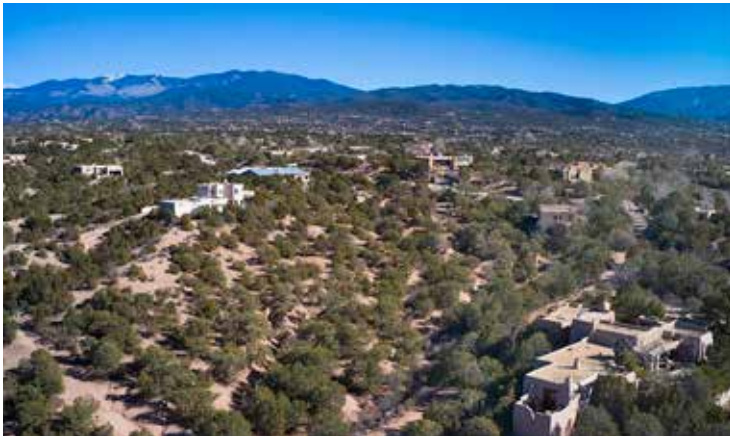




389 CALLE LOMA NORTE, LOT 15



FEATURES

- City sewer & water available
- Excellent location
- Spectacular mountain views

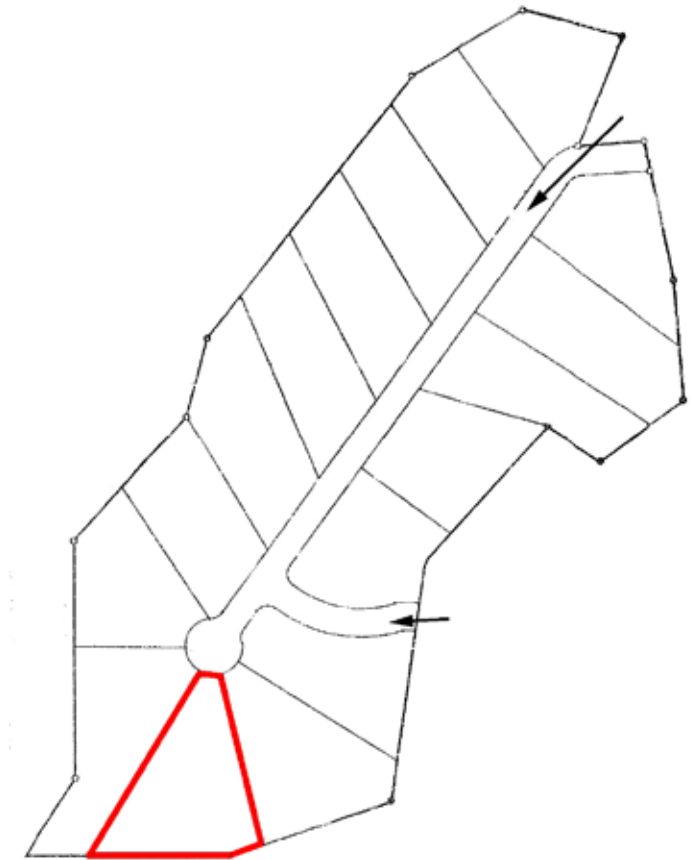


389 CALLE LOMA NORTE, LOT 15

1.314 Acres • \$175,000 • MLS# 202105430

This 1.3 +/- residential lot has spectacular Sangre de Cristo mountain views. At the end of a cul-de-sac with good solar exposure. City sewer and water available. Excellent north side location close to the historic Santa Fe Plaza, Canyon Road and Museum Hill. Opera-lovers will enjoy the near proximity to the world-renowned Santa Fe Opera.

- 1.314 Acres
- City water
- City sewer
- Excellent north side location
- Spectacular Sangre de Cristo mountain views
- Solar exposure
- Cul-de-Sac



Plat depiction is for illustration purposes and may not be entirely accurate.

DARLENE STREIT

SANTA FE REAL ESTATE PROPERTY



DARLENE STREIT

505.920.8001 • dstreit@dstreit.com

Office: 417 E. Palace Avenue
Santa Fe NM 87501

SantaFeRealEstateProperty.com

DarleneStreit.com

SantaFeLuxuryHomesandLand.com



View
Listing
Online

© Sotheby's International Realty, Inc. All rights reserved. Sotheby's International Realty® is a registered trademark. This material is based upon information which we consider reliable but because it has been supplied by third parties, we cannot represent that it is accurate or complete and it should not be relied upon as such. This offering is subject to errors, omissions, changes including price or withdrawal without notice. If your property is listed with a real estate broker, please disregard. It is not our intention to solicit the offerings of other real estate brokers. We are happy to work with them and cooperate fully. Operated by Sotheby's International Realty, Inc. Real estate agents affiliated with Sotheby's International Realty, Inc. are independent contractor sales associates and are not employees of Sotheby's International Realty, Inc. Equal Housing Opportunity. Sotheby's International Realty, 326 Grant Ave, Santa Fe, NM 87501, 505-988-2533.

Sotheby's
INTERNATIONAL REALTY