



# 1008 FOOTHILLS TRAIL



3 Bedroom • 2 Bath • 2,616 SF • \$1,325,000 • MLS# 202105063



## LIVING & DINING

↪ Well Appointed Kitchen ↪ Formal Dining Room



# 1008 FOOTHILLS TRAIL

3 Bedroom • 2 Bath • 2,616 SF • \$1,325,000 • MLS# 202105063

**3** bedroom 2 bath Pueblo style home on 1.864 +/- wooded acres off the legendary Old Santa Fe Trail. Spectacular mountain views. Classic Southwestern design features such as high beamed ceilings, brick and Saltillo tile floors, and an enclosed courtyard with a front portal. Light filled great room with a floor-to ceiling custom kiva defined by side bancos. A second living area leads into a formal dining room with a built-in sideboard and shelving. Handsome spacious kitchen is appointed with a 6 burner Thermador range, Thermador refrigerator, and center island. Large master bedroom with kiva fireplace, sitting area, and direct excess to outdoor patio with sweeping sunset views. 2 guest bedrooms and an intimate personal office. Sizable patio areas, one with outdoor kiva, provides plenty of space for alfresco dining and entertaining family and friends. Home is currently in the boundary area for the highly rated Wood Gormley Elementary School. Convenient city location close to Canyon Road, Santa Fe Plaza, Museum Hill, medical, restaurants, and shopping.

DARLENE STREIT | 505.920.8001 | DSTREIT@DSTREIT.COM



## B E D R O O M S

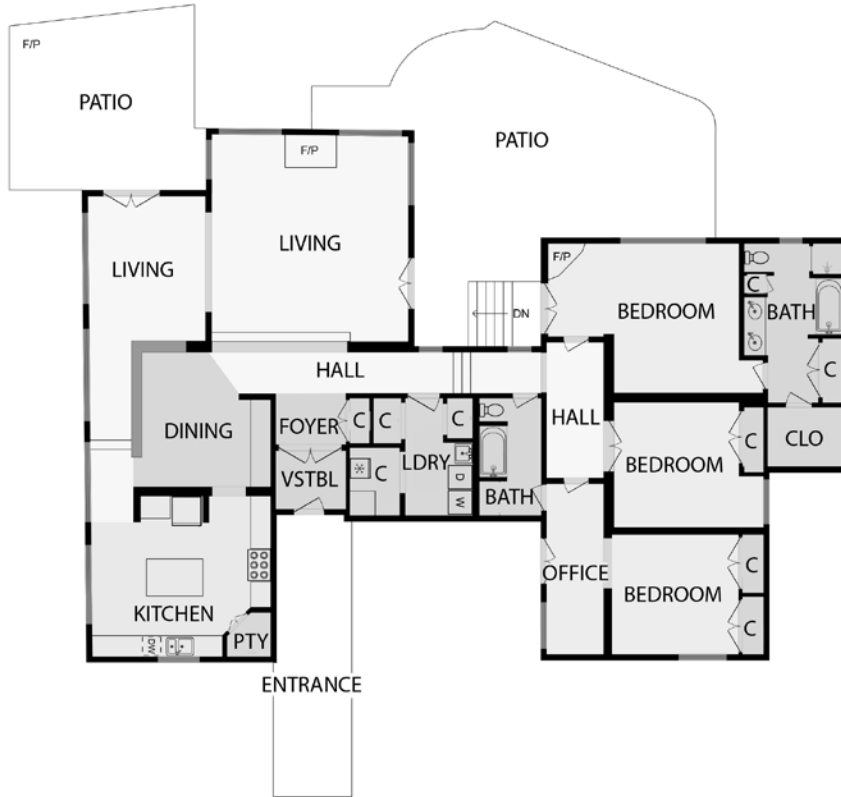
↔ Master Bedroom Fireplace ↔ Outdoor Patio



# DETAILS

- 3 Bedrooms
- 1 Full Baths
- 2616 SF
- 1.86 Acres
- Built in 1983
- Carpet, Brick, Tile Floors
- Frame, Stucco Construction \*
- Flat Roof
- 2 Garage Spaces
- 3 Off Street Parking Spaces
- 3 Fireplaces
- Gas Cooking
- Electric Baseboard, Forced Air, Passive Solar Heating
- Refrigerator, Central Cooling
- City Sewer
- City Water
- Internet: Cable, Wireless
- Security System
- Drip/Sprinkler System
- Community Well
- Xeriscaping

\*Buyer to Verify



*Above floor plan provided by iGuide and may not be entirely accurate.*

*Plat depiction is for illustration purposes and may not be entirely accurate.*



**DARLENE STREIT**

SANTA FE REAL ESTATE PROPERTY



**DARLENE STREIT**

505.920.8001 • dstreit@dstreit.com

Office: 417 E. Palace Avenue

Santa Fe NM 87501

SantaFeRealEstateProperty.com

DarleneStreit.com

SantaFeLuxuryHomesandLand.com



View  
Listing  
Online

© Sotheby's International Realty, Inc. All rights reserved. Sotheby's International Realty® is a registered trademark. This material is based upon information which we consider reliable but because it has been supplied by third parties, we cannot represent that it is accurate or complete and it should not be relied upon as such. This offering is subject to errors, omissions, changes including price or withdrawal without notice. If your property is listed with a real estate broker, please disregard. It is not our intention to solicit the offerings of other real estate brokers. We are happy to work with them and cooperate fully. Operated by Sotheby's International Realty, Inc. Real estate agents affiliated with Sotheby's International Realty, Inc. are independent contractor sales associates and are not employees of Sotheby's International Realty, Inc. Equal Housing Opportunity. Sotheby's International Realty, 326 Grant Ave, Santa Fe, NM 87501, 505-988-2533.

**Sotheby's**  
INTERNATIONAL REALTY