



28 VILLAGE LN



5 Bedroom • 3 Bath • 4,134 SF • \$1,095,000 • MLS# 202104958



LIVING & DINING

⇨ Decorative Tilework ⇨ Murals ⇨ Formal Dining Room



28 VILLAGE LN

5 Bedroom • 3 Bath • 4,134 SF • \$1,095,000 • MLS# 202104958

5 bedroom 3 bath exquisite, ecologically sustainable estate on 5.25 +/- acres with inspirational mountain views. Striking and elegantly detailed home with Moroccan style doorways, colorful decorative tiles, imaginative painted murals and doors, wood ceilings, bay windows, lofts, fireplace, and wood burning stoves. A home for creatives with Zen-like sensibilities. Fluid open floor plan with soft natural light and treehouse views. Two living areas. Formal dining room plus breakfast area near the kitchen. In addition, there is a separate office or library. Retreat from the world in your infrared sauna located in the shoji room, relax in the Turkish tiled bath with private views, or enjoy nature from the hot tub and lounge off the master bedroom. Grounds include a spacious pergola, a labyrinth, fruit trees, grape vines and herbs, and detached studio. The geodesic dome greenhouse is ideal for gardeners. Active solar home tucked off a private road in a small, gated community. Pastoral setting yet minutes from shopping, restaurants, medical and museums.

DARLENE STREIT | 505.920.8001 | DSTREIT@DSTREIT.COM



B E D R O O M S

↪ Turkish Tiled Bath ↪ Hot Tub

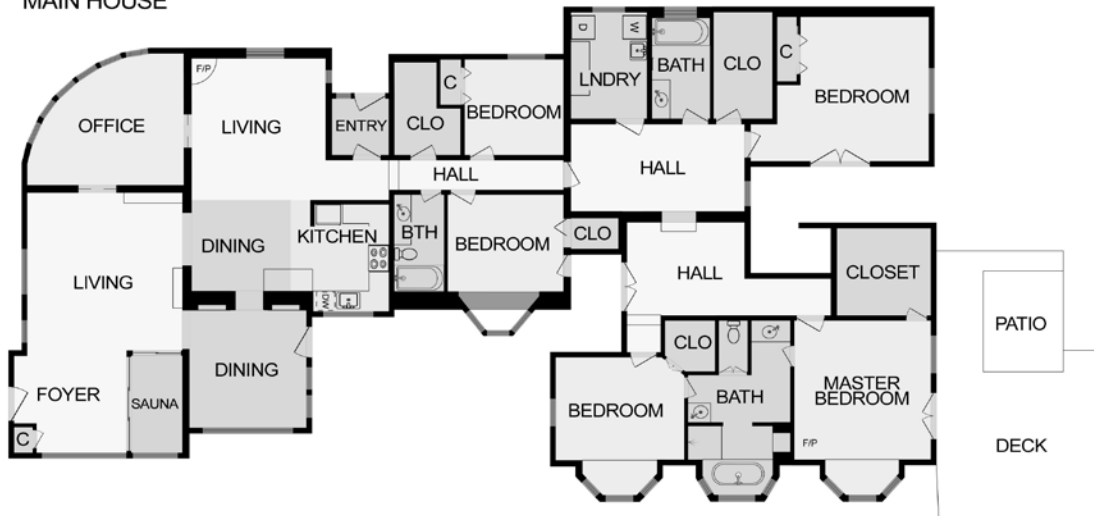


DETAILS

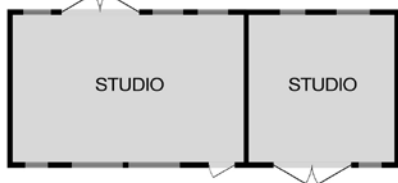
- 5 Bedrooms
- 3 Full Baths
- Main House 3494 SF
- Studio 640 SF
- 5.24 Acres
- Built in 1978
- Brick, Concrete, Tile Floors
- Block, Frame, Stucco, Poured Pumice Construction *
- Flat, Membrane, Metal Propanel, Pitched, Tar & Gravel, Modified Bitumen Roofs
- 2 Fireplaces
- Electric Cooking
- Heating: Active Solar, Electric, Hot Water Baseboard, Wood Stove
- Refrigerator Ductless Cooling
- Septic
- Community Water
- Internet: DSL, Satellite
- HOA Fees: From 2021, \$80 Per Month
- HOA Fees Cover: Road Maintenance, Shared Wells
- Greenhouse
- Hot Tub
- Sauna
- Solar Photovoltaic, Solar Thermal
- Root Cellar
- Solar Meets 85% of Needs and is Owned
- Community Well
- Studio Has Electricity, No Water
- Studio Square Footage is Approx.
- Studio can be Accessed Through the Property or Best Accessed by GPS
- Street Address: 49 Two Trails

*Buyer to Verify

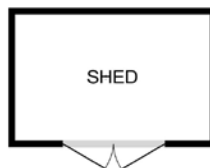
MAIN HOUSE



STUDIO

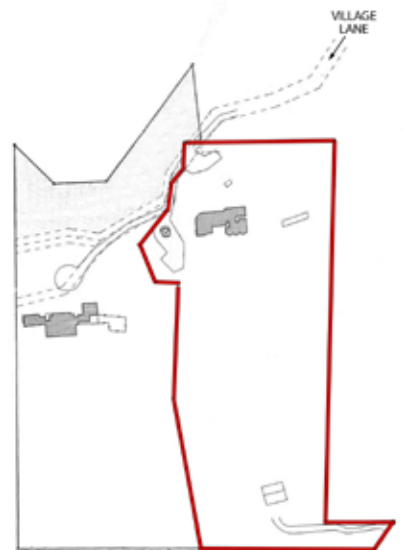


SHED



Above floor plan provided by iGuide and may not be entirely accurate.

Plat depiction is for illustration purposes and may not be entirely accurate.



DARLENE STREIT

SANTA FE REAL ESTATE PROPERTY



DARLENE STREIT
 505.920.8001 • dstreit@dstreit.com
 Office: 417 E. Palace Avenue
 Santa Fe NM 87501

SantaFeRealEstateProperty.com

DarleneStreit.com

SantaFeLuxuryHomesandLand.com



View Listing Online

© Sotheby's International Realty, Inc. All rights reserved. Sotheby's International Realty® is a registered trademark. This material is based upon information which we consider reliable but because it has been supplied by third parties, we cannot represent that it is accurate or complete and it should not be relied upon as such. This offering is subject to errors, omissions, changes including price or withdrawal without notice. If your property is listed with a real estate broker, please disregard. It is not our intention to solicit the offerings of other real estate brokers. We are happy to work with them and cooperate fully. Operated by Sotheby's International Realty, Inc. Real estate agents affiliated with Sotheby's International Realty, Inc. are independent contractor sales associates and are not employees of Sotheby's International Realty, Inc. Equal Housing Opportunity. Sotheby's International Realty, 326 Grant Ave, Santa Fe, NM 87501, 505-988-2533.

Sotheby's
 INTERNATIONAL REALTY