



# 3 SILVER MESA PLAZA



3 Bedroom • 3.5 Bath • 4,353 SF • \$2,750,000 • MLS# 202104948





L A S C A M P A N A S





# 3 SILVER MESA PLAZA

3 Bedroom • 3.5 Bath • 4,353 SF • \$2,750,000 • MLS# 202104948

**3** to 4 bedroom 3.5 bath under construction Santa Fe Contemporary Pueblo style home in the Silver Mesa neighborhood of Las Campanas with stunning Jemez and Sangre de Cristo mountain views. Designed by the acclaimed Hoopes + Associates, one of Santa Fe's top architectural design studios. Single story with no interior steps. Three fireplaces, all wood and tile floors, radiant in floor heating, and ducted mini split cooling system. Landscaping and drip/sprinkler system included. 3-car garage. Located in close proximity to the award winning Hacienda Clubhouse and the Las Campanas Spa and Tennis Center. Amenities for this gated community home include community water, sewer and natural gas as well as gated and paved roads, 24-hour roaming security, common areas and 24-hour EMTs on site. Excellent location with easy access to the Santa Fe Plaza, Canyon Road and Museum Hill. Las Campanas is a private club and memberships are available for purchase upon approval.

DARLENE STREIT | 505.920.8001 | DSTREIT@DSTREIT.COM



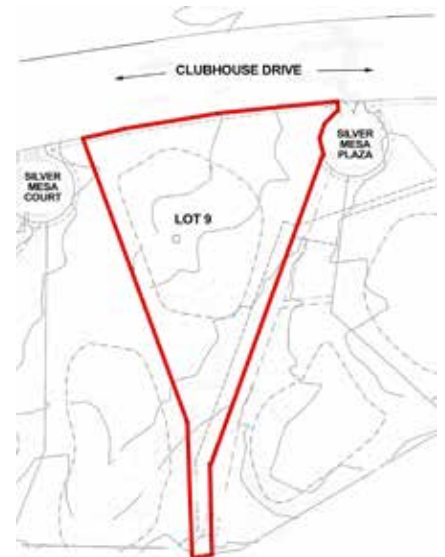
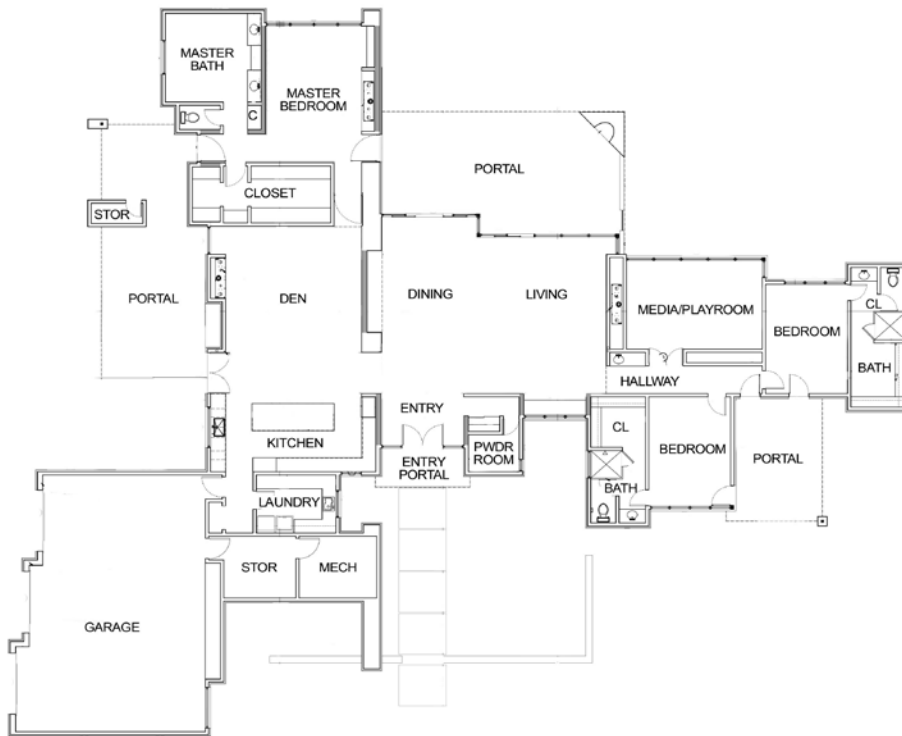
MOUNTAIN VIEWS



# DETAILS

- 3 Bedrooms
- Baths: 1 Full, 2 Three Quarter, 1 Half
- 4353 SF
- 2.39 Acres
- Under Construction
- Wood, Tile Floors
- Frame, Stucco Construction \*
- Flat Roof
- 3 Garage Spaces
- 3 Fireplaces
- Gas Cooking
- Radiant In Floor Heating
- Refrigerator, Ductless Cooling
- City Sewer
- Community Water
- Internet: Cable, DSL
- HOA Fees: For 2020, \$3586 Per Year
- HOA Fees Cover: Community Area & Road Maintenance, Security
- Insulated Windows
- Drip/Sprinkler System
- Landscaped

\*Buyer to Verify



*Floor Plan depiction is for illustration purposes and may not be entirely accurate.*

*Plat depiction is for illustration purposes and may not be entirely accurate.*

**DARLENE STREIT**

SANTA FE REAL ESTATE PROPERTY



**DARLENE STREIT**

505.920.8001 • dstreit@dstreit.com

Office: 417 E. Palace Avenue

Santa Fe NM 87501

SantaFeRealEstateProperty.com

DarleneStreit.com

SantaFeLuxuryHomesandLand.com



View  
Listing  
Online

© Sotheby's International Realty, Inc. All rights reserved. Sotheby's International Realty® is a registered trademark. This material is based upon information which we consider reliable but because it has been supplied by third parties, we cannot represent that it is accurate or complete and it should not be relied upon as such. This offering is subject to errors, omissions, changes including price or withdrawal without notice. If your property is listed with a real estate broker, please disregard. It is not our intention to solicit the offerings of other real estate brokers. We are happy to work with them and cooperate fully. Operated by Sotheby's International Realty, Inc. Real estate agents affiliated with Sotheby's International Realty, Inc. are independent contractor sales associates and are not employees of Sotheby's International Realty, Inc. Equal Housing Opportunity. Sotheby's International Realty, 326 Grant Ave, Santa Fe, NM 87501, 505-988-2533.

**Sotheby's**  
INTERNATIONAL REALTY