



810 CAMINO DON EMILIO



3 Bedroom • 2 Bath • 2,077 SF • \$595,000 • MLS# 202103696



LIVING & DINING

⇒ Single Level ⇒ Passive Solar Design



810 CAMINO DON EMILIO

3 Bedroom • 2 Bath • 2,077 SF • \$595,000 • MLS# 202103696

Spectacular views from this 3 bedroom 2 bath Pueblo style home in Eco Seco, a planned green neighborhood with best practices decidedly in mind. Single level home and passive solar design. Southwestern architectural detailing includes beamed ceilings, colored concrete floors, and a kiva fireplace. Open floor plan bathed in abundant natural light. Floor plan offers a nice separation of master and secondary bedrooms and a studio/office/den with separate entry. Outdoor deck for entertaining and enjoying the mountain views. Convenient location just 4 miles from the Santa Fe Plaza.

DARLENE STREIT | 505.920.8001 | DSTREIT@DSTREIT.COM



B E D R O O M S

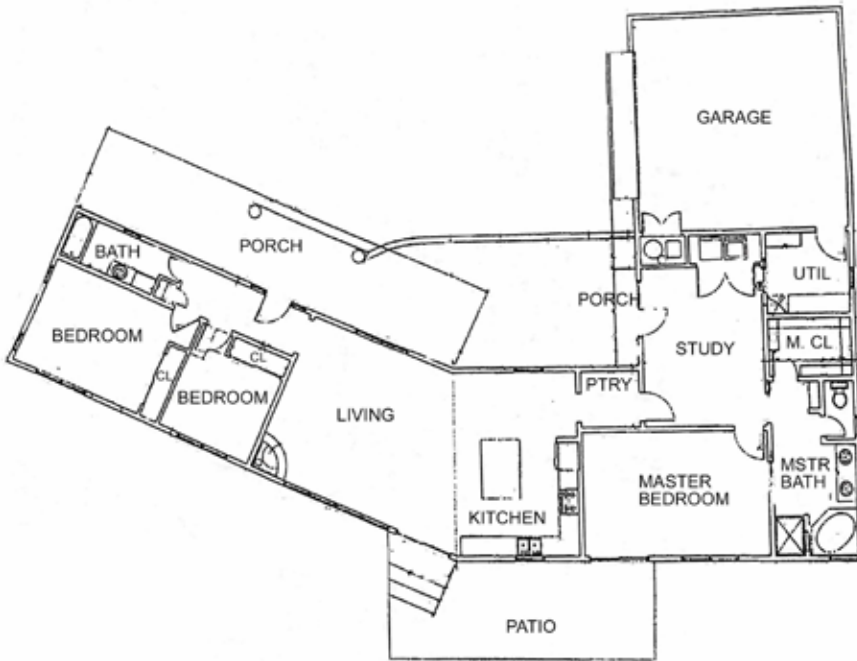
↻ Abundant Light ↻ Kiva Fireplace



DETAILS

- 3 Bedrooms
- 2 Full Baths
- 2077 SF
- 0.89 Acre
- Built in 2003
- Frame, Stucco Construction *
- Flat, Tar & Gravel Roof
- 2 Garage Spaces
- 1 Fireplace
- Gas Cooking
- Gas, Hot Water, Radiant In Floor Heating
- Septic
- Community Water
- Internet: DSL
- HOA Fees: From 2019, \$75 Per Month
- HOA Fees Cover: Road Maintenance, Water
- Insulated Windows
- Landscaped
- Passive Solar Design

*Buyer to Verify



Floor plan is for illustration purposes and may not be entirely accurate.



DARLENE STREIT

SANTA FE REAL ESTATE PROPERTY



DARLENE STREIT
505.920.8001 • dstreit@dstreit.com
 Office: 417 E. Palace Avenue
 Santa Fe NM 87501

SantaFeRealEstateProperty.com
DarleneStreit.com
SantaFeLuxuryHomesandLand.com



View
Listing
Online

© Sotheby's International Realty, Inc. All rights reserved. Sotheby's International Realty® is a registered trademark. This material is based upon information which we consider reliable but because it has been supplied by third parties, we cannot represent that it is accurate or complete and it should not be relied upon as such. This offering is subject to errors, omissions, changes including price or withdrawal without notice. If your property is listed with a real estate broker, please disregard. It is not our intention to solicit the offerings of other real estate brokers. We are happy to work with them and cooperate fully. Operated by Sotheby's International Realty, Inc. Real estate agents affiliated with Sotheby's International Realty, Inc. are independent contractor sales associates and are not employees of Sotheby's International Realty, Inc. Equal Housing Opportunity. Sotheby's International Realty, 326 Grant Ave, Santa Fe, NM 87501, 505-988-2533.

Sotheby's
INTERNATIONAL REALTY