



14 LUCERO RD



3 Bedroom • 3 Bath • 4,299 SF • \$875,000 • MLS# 202103406



## LIVING & DINING

⇒ Saltillo Tile Floors ⇒ Country Kitchen w/ Island



# 14 LUCERO RD

3 Bedroom • 3 Bath • 4,299 SF • \$875,000 • MLS# 202103406

This 3 bedroom 3 bath classic Pueblo style home is ideally sited on more than 1.6 acres in the sought after Eldorado area. Next to a green belt with mountain views. Iconic Santa Fe features such as Saltillo tile floors, latilla ceilings with vigas, kiva fireplaces, decorative tiles and charming turquoise doors. A winding brick-lined walkway through a landscaped courtyard leads to a long entry foyer with windows, space for art and kiva fireplace. The dramatic living room is encircled by windows for light and views. An open floor plan offers an easy flow to the large kitchen and dining room. The country kitchen has center island with wood counter, farmhouse sink, refrigerator, lots of storage and brick floors. A private patio provides space for al fresco dining and entertaining. A den/media room is near the master bedroom and bath with tub, spacious walk-in shower, skylights and built-in closet. For those with artistic/work endeavors, there is also a detached 600 sq ft studio. Insulated windows, water softener, sprinkler/drip system, out buildings, and an oversized 2-car garage. Enjoy the amenities of the community of Eldorado including a clubhouse, swimming pool, dining and nearby horse stables with easy access to downtown Santa Fe and I-25.

DARLENE STREIT | 505.920.8001 | DSTREIT@DSTREIT.COM



## B E D R O O M S

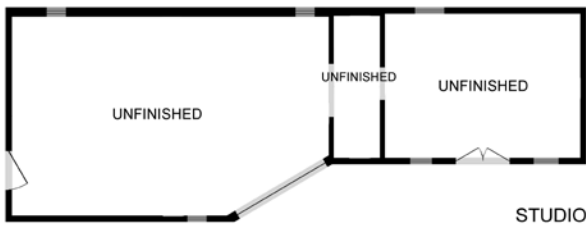
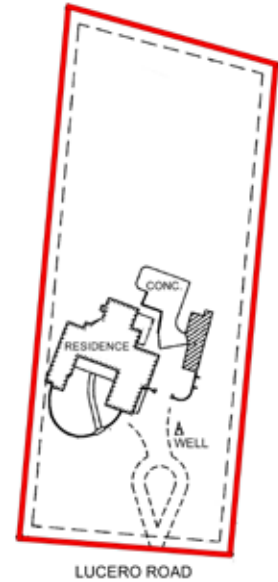
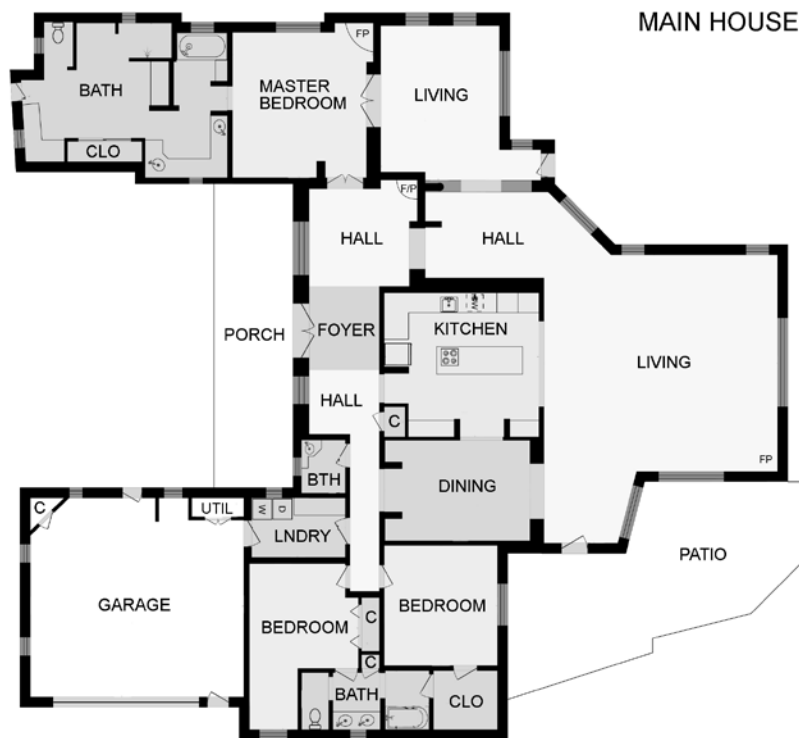
↔ Den/Media Room ↔ Skylights



# DETAILS

- 3 Bedrooms
- Baths: 2 Full, 1 Half
- Main House 3621 SF  
Studio 678 Unheated SF
- 1.63 Acres
- Built in 1993
- Wood, Tile, Carpet, Brick Floors
- Frame, Stucco Construction \*
- Flat, Foam Roof
- 2 Garage Spaces
- 3 Fireplaces
- Gas Cooking
- Gas, Hot Water, Baseboard (hot water), Radiant In Floor Heating
- Evaporative- Hall Cooling
- Septic
- Private Well
- Internet: Cable, DSL
- Insulated Windows
- Landscaped
- Water Softener
- HOA Fees: From 2020, \$550 Per Year
- HOA Fees Cover: Community Area Maintenance, Recreational Facilities
- RV Parking Available
- Drip/Sprinkler System
- Security System

\*Buyer to Verify



Above floor plan provided by iGuide and may not be entirely accurate.

Plat depiction is for illustration purposes and may not be entirely accurate.

**DARLENE STREIT**

SANTA FE REAL ESTATE PROPERTY



**DARLENE STREIT**  
**505.920.8001** • [dstreit@dstreit.com](mailto:dstreit@dstreit.com)  
 Office: 417 E. Palace Avenue  
 Santa Fe NM 87501

[SantaFeRealEstateProperty.com](http://SantaFeRealEstateProperty.com)

[DarleneStreit.com](http://DarleneStreit.com)

[SantaFeLuxuryHomesandLand.com](http://SantaFeLuxuryHomesandLand.com)



View  
Listing  
Online

© Sotheby's International Realty, Inc. All rights reserved. Sotheby's International Realty® is a registered trademark. This material is based upon information which we consider reliable but because it has been supplied by third parties, we cannot represent that it is accurate or complete and it should not be relied upon as such. This offering is subject to errors, omissions, changes including price or withdrawal without notice. If your property is listed with a real estate broker, please disregard. It is not our intention to solicit the offerings of other real estate brokers. We are happy to work with them and cooperate fully. Operated by Sotheby's International Realty, Inc. Real estate agents affiliated with Sotheby's International Realty, Inc. are independent contractor sales associates and are not employees of Sotheby's International Realty, Inc. Equal Housing Opportunity. Sotheby's International Realty, 326 Grant Ave, Santa Fe, NM 87501, 505-988-2533.

**Sotheby's**  
INTERNATIONAL REALTY