



2709 HERRADURA RD UNIT D



2 Bedroom • 2 Bath • 1,320 SF • \$450,000 • MLS# 202103319



LIVING & DINING

⇒ Saltillo Tile Floors ⇒ Sky Lit Kitchen



2709 HERRADURA RD UNIT D

2 Bedroom • 2 Bath • 1,320 SF • \$450,000 • MLS# 202103319

Conveniently situated in town, this 2 bedroom 2 bathroom single-level pueblo style home offers balance between privacy and an attractive location. Gentle and natural light fill the interior, creating a warm and welcoming ambience. The living room features bright sizable walls accentuated by Santa Fe style elements such as vigas and beams, Saltillo tile flooring, and a kiva. The sky lit kitchen features stainless steel appliances, a gas stovetop, breakfast counter, all highlighted by recessed lighting. Master bedroom includes an ensuite bath and spacious walk-in closet. Enjoy year-round comfort with radiant heat and 2 mini splits. Side and front patios, landscaping, sprinkler/drip system and 2-car attached garage. Just minutes from I-25, restaurants, shopping, medical, museums, and the historic Santa Fe Plaza.

DARLENE STREIT | 505.920.8001 | DSTREIT@DSTREIT.COM



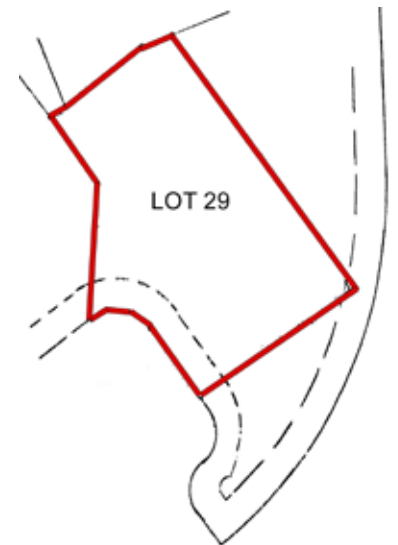
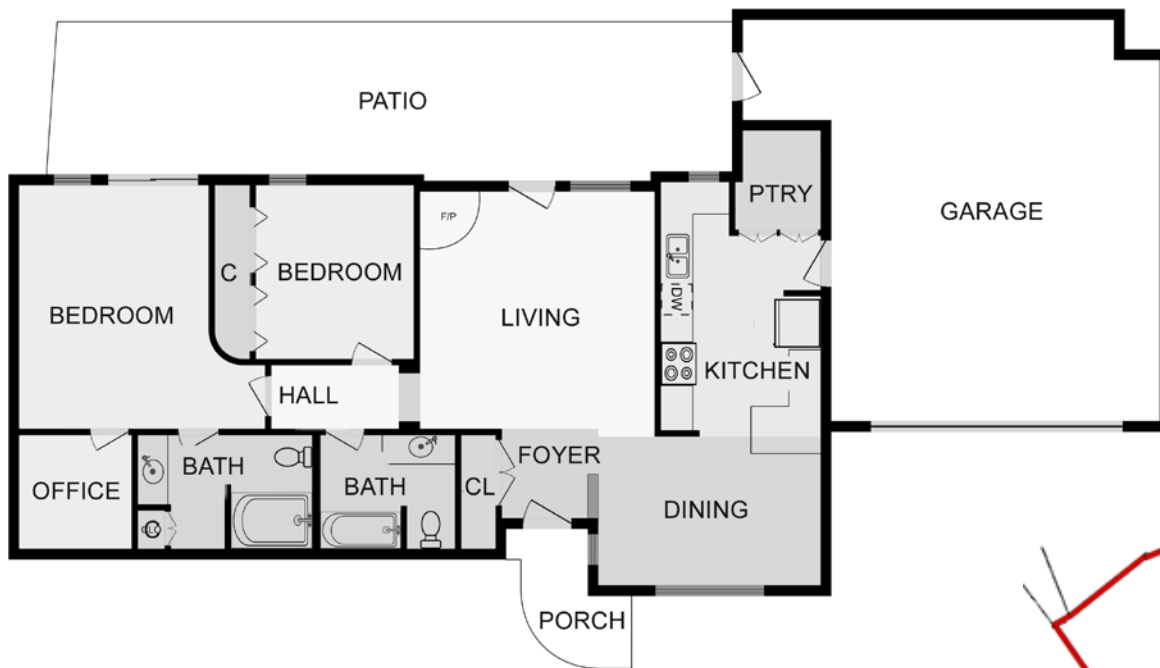
B E D R O O M S

↔ Master Ensuite Bath ↔ Walk-In Closet



DETAILS

- 2 Bedrooms
- 2 Full Baths
- 1320 SF
- 0.06 Acre
- Built in 1992
- Frame, Stucco Construction *
- Flat, Modified Bitumen Roof
- 2 Garage Spaces
- 1 Fireplace
- Gas Cooking
- Radiant In Floor Heating
- Refrigerator Ductless Cooling
- City Sewer
- City Water
- Internet: Cable, DSL
- HOA Fees: From 2020, \$720 Per Year
- HOA Fees Cover: Community Area & Road Maintenance
- Insulated Windows
- Landscaped
- Drip/Sprinkler System
- *Buyer to Verify



Above floor plan provided by iGuide and may not be entirely accurate.

Plat depiction is for illustration purposes and may not be entirely accurate.

DARLENE STREIT

SANTA FE REAL ESTATE PROPERTY



DARLENE STREIT
505.920.8001 • dstreit@dstreit.com
 Office: 417 E. Palace Avenue
 Santa Fe NM 87501

SantaFeRealEstateProperty.com

DarleneStreit.com

SantaFeLuxuryHomesandLand.com



View
Listing
Online

© Sotheby's International Realty, Inc. All rights reserved. Sotheby's International Realty® is a registered trademark. This material is based upon information which we consider reliable but because it has been supplied by third parties, we cannot represent that it is accurate or complete and it should not be relied upon as such. This offering is subject to errors, omissions, changes including price or withdrawal without notice. If your property is listed with a real estate broker, please disregard. It is not our intention to solicit the offerings of other real estate brokers. We are happy to work with them and cooperate fully. Operated by Sotheby's International Realty, Inc. Real estate agents affiliated with Sotheby's International Realty, Inc. are independent contractor sales associates and are not employees of Sotheby's International Realty, Inc. Equal Housing Opportunity. Sotheby's International Realty, 326 Grant Ave, Santa Fe, NM 87501, 505-988-2533.

Sotheby's
INTERNATIONAL REALTY