



2 WESTWIND RD



5 Bedroom • 3 Bath • 2,712 SF • \$599,000 • MLS# 202103038



## LIVING & DINING

↻ High Ceilings ↻ Open Kitchen



# 2 WESTWIND RD

5 Bedroom • 3 Bath • 2,712 SF • \$599,000 • MLS# 202103038

Spacious 5 bedroom 3 bath Pueblo-style home in Rancho Viejo with northwestern mountain views. High ceilings with vigas, two fireplaces, tile floors throughout, radiant heat, and no interior steps. Two large living areas with formal dining and open kitchen with island seating and built-in desk. Split bedroom plan. Master Suite has a corner fireplace, access to outdoor patio, and ensuite bath with soaking tub, walk-in shower and large glass block window. All bathrooms were recently updated. Spacious covered back patio and 2-car garage. Stretching across 11,000 rolling acres dotted with piñon and juniper trees, Rancho Viejo has been thoughtfully planned to preserve the natural open spaces while providing a sense of community. Paved trails for walking, biking, and jogging. Convenient location close to Santa Fe Community College, Santa Fe Municipal Airport with easy access to I-25 and all the amenities of the City.

DARLENE STREIT | 505.920.8001 | DSTREIT@DSTREIT.COM



## B E D R O O M S

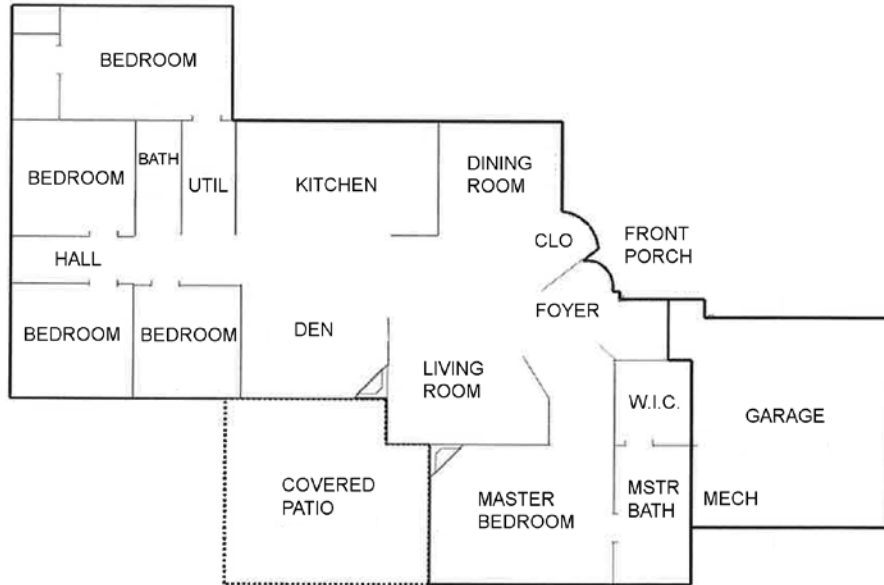
↻ Split Bedroom Plan ↻ Recently Updated Bathrooms



# DETAILS

- 5 Bedrooms
- 3 Full Baths
- 2712 SF
- 0.208 Acre
- Built in 2001
- Frame, Stucco Construction \*
- Flat, Tar & Gravel Roof
- 2 Garage Spaces
- 2 Fireplaces
- Gas Cooking
- Gas, Radiant In Floor Heating
- Evaporative, (2 Units) Cooling
- City Sewer
- City Water
- Internet: Cable, DSL
- Landscaped
- HOA Fees: From 2020, \$120 Per Month
- HOA Fees Cover: Community Area & Road Maintenance
- Insulated Windows
- Drip/Sprinkler System

\*Buyer to Verify



*Above floor plan is for illustration purposes and may not be entirely accurate.*

*Plat depiction is for illustration purposes and may not be entirely accurate.*

**DARLENE STREIT**

SANTA FE REAL ESTATE PROPERTY



**DARLENE STREIT**  
**505.920.8001** • [dstreit@dstreit.com](mailto:dstreit@dstreit.com)  
 Office: 417 E. Palace Avenue  
 Santa Fe NM 87501

[SantaFeRealEstateProperty.com](http://SantaFeRealEstateProperty.com)  
[DarleneStreit.com](http://DarleneStreit.com)  
[SantaFeLuxuryHomesandLand.com](http://SantaFeLuxuryHomesandLand.com)



View  
Listing  
Online

© Sotheby's International Realty, Inc. All rights reserved. Sotheby's International Realty® is a registered trademark. This material is based upon information which we consider reliable but because it has been supplied by third parties, we cannot represent that it is accurate or complete and it should not be relied upon as such. This offering is subject to errors, omissions, changes including price or withdrawal without notice. If your property is listed with a real estate broker, please disregard. It is not our intention to solicit the offerings of other real estate brokers. We are happy to work with them and cooperate fully. Operated by Sotheby's International Realty, Inc. Real estate agents affiliated with Sotheby's International Realty, Inc. are independent contractor sales associates and are not employees of Sotheby's International Realty, Inc. Equal Housing Opportunity. Sotheby's International Realty, 326 Grant Ave, Santa Fe, NM 87501, 505-988-2533.

**Sotheby's**  
INTERNATIONAL REALTY