



17 STORM VIEW LN



5 Bedroom • 7 Bath • 8,268 SF • \$4,200,000 • MLS# 202102868



LIVING & DINING

⇒ Dramatic Great Room ⇒ Chef's Kitchen ⇒ Informal Dining Area



17 STORM VIEW LN

5 Bedroom • 7 Bath • 8,268 SF • \$4,200,000 • MLS# 202102868

Rarely does a property become available in Santa Fe that truly distinguishes itself from the rest. Situated on an elevated setting above the 14th hole of the Las Campanas Sunrise golf course, this exquisite 5 bedroom 7 bath estate showcases masterful craftsmanship and spectacular Jemez mountain views and enchanting New Mexican sunsets. A master designed courtyard leads to the front entrance and beyond to a dramatic great room with panoramic vistas and a natural flow into the formal dining room. The gourmet kitchen with Sub-Zero refrigerator, high end appliances, and wine cooler, opens to comfortable and roomy informal living and dining areas. In a private wing of the home is the luxurious master suite with an extraordinary bath and spacious, handsomely fitted closet space. This private wing also includes 2 offices that are accessible to one another or can be separated with custom built sliding bookcases. Two spacious guest suites, each with its own bath and a sitting room between are in a separate wing of the house. In addition, there is a large media room. The expansive portal with an outdoor fireplace is the perfect setting to dine and savor the mountain air with family and friends. A 2-bedroom 2 bath guesthouse with great room and kitchen offers ultimate privacy for guests. Oversized 3-car garage with storage rooms. Recent extensive renovation (2020 and 2021). Minutes from fine dining and shopping, experience a Santa Fe lifestyle that is nothing short of extraordinary.

DARLENE STREIT | 505.920.8001 | DSTREIT@DSTREIT.COM



B E D R O O M S

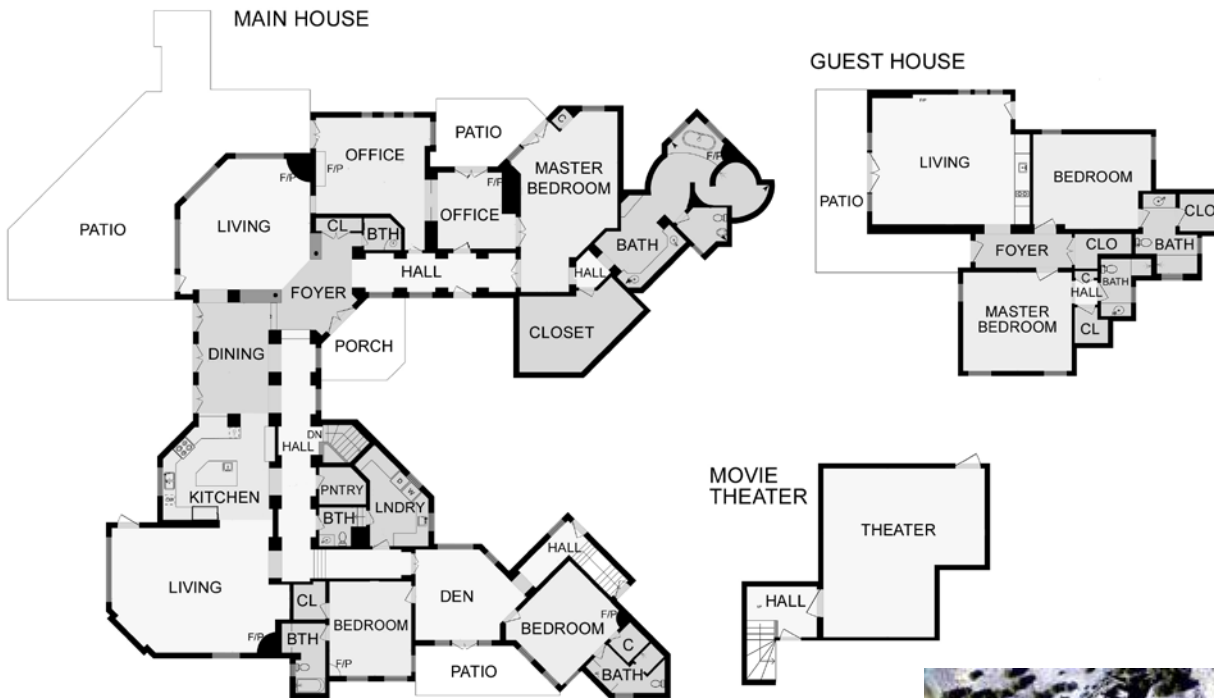
↪ Two Guest Suites ↪ Luxurious Master Suite ↪ Guest House



DETAILS

- Total 5 Bedrooms, 7 Baths
- Main House 6800 SF
- Guest House 1468 SF
- Garage & Storage Rooms 1700 SF
- 1.34 Acres
- Main House Built in 2002
- Guest House Built in 2008
- Wood, Stone, Carpet, Flagstone Floors
- Frame, Stucco Construction *
- Flat Roof
- Oversized 3-Car Garage
- 9 Fireplaces
- Gas, Electric Cooking
- Radiant In Floor Heating
- Central Cooling
- Separate Master Wing
- Two Offices
- Expansive Portal
- Outdoor Fireplace and Firepit
- Media Room
- Golf Course and Mountain Views
- Community Sewer + Water
- Internet: Cable, DSL, Satellite
- HOA Fees: From 2020, \$2896 Per Year
- HOA Fees Cover: Community Area & Road Maintenance, Security
- Landscaped
- Drip/Sprinkler System
- Security System

*Buyer to Verify



Above floor plan provided by iGuide and may not be entirely accurate.

Plat depiction is for illustration purposes and may not be entirely accurate.



DARLENE STREIT

SANTA FE REAL ESTATE PROPERTY



DARLENE STREIT
 505.920.8001 • dstreit@dstreit.com
 Office: 417 E. Palace Avenue
 Santa Fe NM 87501

SantaFeRealEstateProperty.com

DarleneStreit.com

SantaFeLuxuryHomesandLand.com



View
Listing
Online

© Sotheby's International Realty, Inc. All rights reserved. Sotheby's International Realty® is a registered trademark. This material is based upon information which we consider reliable but because it has been supplied by third parties, we cannot represent that it is accurate or complete and it should not be relied upon as such. This offering is subject to errors, omissions, changes including price or withdrawal without notice. If your property is listed with a real estate broker, please disregard. It is not our intention to solicit the offerings of other real estate brokers. We are happy to work with them and cooperate fully. Operated by Sotheby's International Realty, Inc. Real estate agents affiliated with Sotheby's International Realty, Inc. are independent contractor sales associates and are not employees of Sotheby's International Realty, Inc. Equal Housing Opportunity. Sotheby's International Realty, 326 Grant Ave, Santa Fe, NM 87501, 505-988-2533.

Sotheby's
INTERNATIONAL REALTY