



3364 PASEO SEGUNDA & LOT



4 Bedroom • 2 Bath • 4,134 SF • \$2,300,000 • MLS# 202102726





## LIVING & DINING

↻ Open Concept Design ↻ Spacious Kitchen



# 3364 PASEO SEGUNDA & LOT

4 Bedroom • 2 Bath • 4,134 SF • \$2,300,000 • MLS# 202102726

Set high in the hills on 40+ acres of mature trees amid spectacular landscapes, this 4 bedroom 2 bath Pueblo Revival style home offers a serene retreat just 5 miles from the historic Santa Fe Plaza. Open concept living and dining areas which open out to a portal and a wrap-around deck where you can enjoy al fresco dining and watch the sunset cast a sepia hue on the pines below. Spacious kitchen includes new counter tops and backsplashes and new Wolf oven and range (2019-2020). The master bedroom, a media room and separate study complete the main floor. The lower level currently configured as three bedrooms and a bathroom includes one very large bedroom that offers flex space as a second living area or studio. New HVAC system throughout the house (2019-2020). This listing includes 2 separate property parcels.

DARLENE STREIT | 505.920.8001 | DSTREIT@DSTREIT.COM



## B E D R O O M S

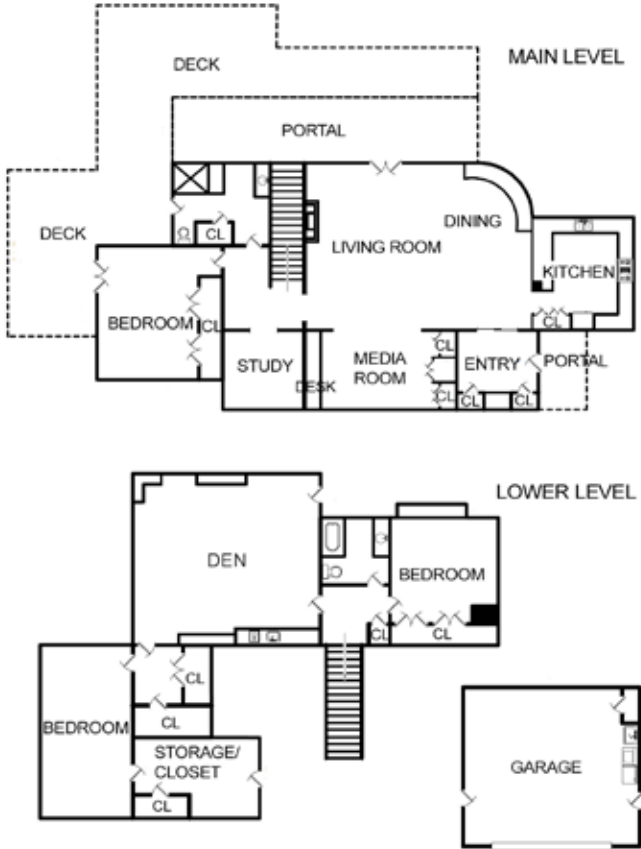
↪ Media Room ↪ Wrap-Around Deck





# DETAILS

- 4 Bedrooms
- Baths: 1 Full, 1 Three Quarter
- 4134 SF
- Main House on 10.50 Ac
- Adjacent Parcel 30.55 Ac
- Built in 1992
- Cherry Wood, Carpet, Tile Floors
- Flat Roof
- 2 Garage Spaces
- Gas Cooking
- Forced Air Heating / Cooling
- Propane
- Septic
- Well
- Gated Property
- Internet: Satellite, HughesNet
- Buyer to Verify
- Road Owner Assoc. Fees: \$1000 Per Year
- Fees Cover: Road Maintenance, Snow Plowing
- Heated Garage



*Above floor plan is for illustration purposes and may not be entirely accurate.*

*Plat depiction is for illustration purposes and may not be entirely accurate.*

**DARLENE STREIT**

SANTA FE REAL ESTATE PROPERTY



**DARLENE STREIT**  
 505.920.8001 • dstreit@dstreit.com  
 Office: 417 E. Palace Avenue  
 Santa Fe NM 87501

SantaFeRealEstateProperty.com

DarleneStreit.com

SantaFeLuxuryHomesandLand.com



View  
Listing  
Online

© Sotheby's International Realty, Inc. All rights reserved. Sotheby's International Realty® is a registered trademark. This material is based upon information which we consider reliable but because it has been supplied by third parties, we cannot represent that it is accurate or complete and it should not be relied upon as such. This offering is subject to errors, omissions, changes including price or withdrawal without notice. If your property is listed with a real estate broker, please disregard. It is not our intention to solicit the offerings of other real estate brokers. We are happy to work with them and cooperate fully. Operated by Sotheby's International Realty, Inc. Real estate agents affiliated with Sotheby's International Realty, Inc. are independent contractor sales associates and are not employees of Sotheby's International Realty, Inc. Equal Housing Opportunity. Sotheby's International Realty, 326 Grant Ave, Santa Fe, NM 87501, 505-988-2533.

**Sotheby's**  
INTERNATIONAL REALTY