



217 SENA ST ABC



5 Bedroom • 5 Bath • 3,948 SF • \$1,550,000 • MLS #202102443



LIVING & DINING

⇨ Dramatic Fireplace ⇨ Cook's Kitchen



217 SENA ST ABC

5 Bedroom • 5 Bath • 3,948 SF • \$1,550,000 • MLS #202102443

Unique opportunity to own this classic 3 bedroom 3 bath home plus 2 casitas centrally located in the highly desirable South Capitol neighborhood. The main house foyer leads to the living room with dramatic fireplace open on 3 sides with a floor-to-ceiling stone tile mantel. An open living/dining floor plan provides space and flow for entertaining. The cook's kitchen has an artistic tray ceiling, custom cabinetry, granite counter tops, well-appointed appliances, center island with storage and breakfast room. The master suite with fireplace opens to an office/studio/sitting area with access to the front portal. Detached from the main house is a duplex in which each side is a comfortable one bedroom one bath casita with kitchen. The two casitas offer privacy for guests, opportunities for live/work or potential for rental income. Highlighted features include neutral stone tile accents throughout, hand-hewn beams, doors and mantels, custom plaster walls, skylights, lighted nichos, landscaped courtyards and off-street parking. Each of the dwellings comes with washer and dryer. Prime location close to the Railyard Arts District, Kaune's Neighborhood Market, Whole Foods, and the historic Santa Fe Plaza.

DARLENE STREIT | 505.920.8001 | DSTREIT@DSTREIT.COM



B E D R O O M S

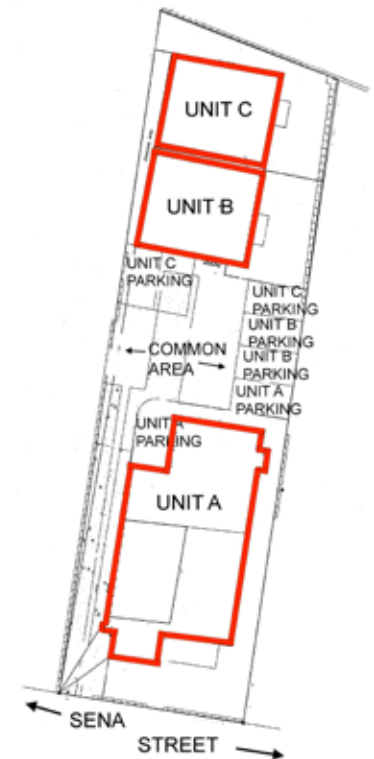
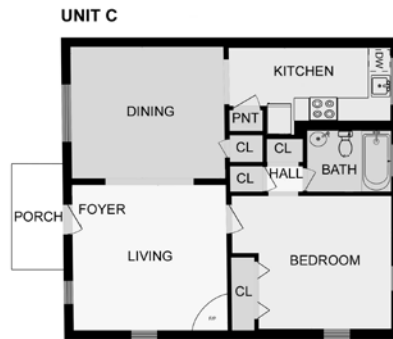
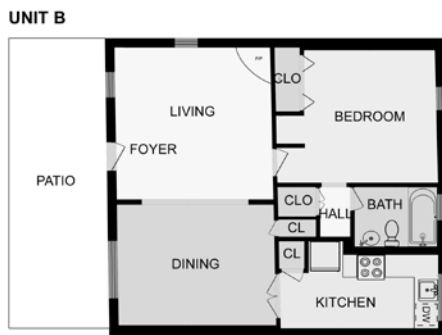
⇨ Custom Plaster Walls ⇨ Hand-Hewn Beams



DETAILS

- 5 Bedrooms
- Baths: 3 Full, 2 Three Quarter
- Adobe and possibly other materials, Block, Frame, Pumice/Poured, Stucco Construction *
- Built in 1935
- Flat, Tar & Gravel Roof
- 6 Off Street Parking Spaces
- Square footage:
 - Main (Unit A): 2468 (includes basement)
 - Units B & C: 1480
- 5 Fireplaces
- Carpet, Tile, Wood Floors
- Gas Cooking
- Forced Air, Gas, Gas Stove Heating
- Ductless A/C
- City Sewer
- City Water
- Internet: Cable, DSL
- Landscaped

**Buyer to Verify*



Floor plan provided is for illustration purposes and may not be entirely accurate.

Plat depiction is for illustration purposes and may not be entirely accurate.

DARLENE STREIT

SANTA FE REAL ESTATE PROPERTY



DARLENE STREIT
 505.920.8001 • dstreit@dstreit.com
 Office: 417 E. Palace Avenue
 Santa Fe NM 87501

SantaFeRealEstateProperty.com
 DarleneStreit.com
 SantaFeLuxuryHomesandLand.com



View
Listing
Online

© Sotheby's International Realty, Inc. All rights reserved. Sotheby's International Realty® is a registered trademark. This material is based upon information which we consider reliable but because it has been supplied by third parties, we cannot represent that it is accurate or complete and it should not be relied upon as such. This offering is subject to errors, omissions, changes including price or withdrawal without notice. If your property is listed with a real estate broker, please disregard. It is not our intention to solicit the offerings of other real estate brokers. We are happy to work with them and cooperate fully. Operated by Sotheby's International Realty, Inc. Real estate agents affiliated with Sotheby's International Realty, Inc. are independent contractor sales associates and are not employees of Sotheby's International Realty, Inc. Equal Housing Opportunity. Sotheby's International Realty, 326 Grant Ave, Santa Fe, NM 87501, 505-988-2533.

Sotheby's
 INTERNATIONAL REALTY