



707 E PALACE AVE UNIT 3



3 Bedroom • 3 Bath • 2,560 SF • \$925,000 • MLS # 202102266



LIVING & DINING

↻ Custom Cabinetry ↻ Hand-Hewn Wood Floors ↻ Sunroom



707 E PALACE AVE UNIT 3

3 Bedroom • 3 Bath • 2,560 SF • \$925,000 • MLS # 202102266

3 bedroom 3 bath split-level condo in La Vereda Compound in the Historic Eastside. Private end unit with its own gate directly onto Palace Avenue. Distinctive finishes include custom cabinetry, granite countertops, wide plank hand-hewn wood floors, and tall dramatic ceilings. Good separation of space between public areas and private rooms. Open living and kitchen plus formal dining room. Living room features a dramatic copper clad fireplace extending from the floor-to-ceiling. Passive solar sun-room with a great indoor/outdoor feel. A second living area offers flex space as a media room, studio, or office. Spacious master suite with luxurious bath with double vanities and large walk-in shower. Multiple balconies and decks in addition to a landscaped courtyard with outdoor kiva. 2 off-street parking places with one covered. La Vereda Compound is graced by many tall trees that provide shade and beauty as well as several common area gardens and green spaces.. Close to The Santa Fe Plaza, Patrick Smith Park, and the world-renowned Canyon Road.

DARLENE STREIT | 505.920.8001 | DSTREIT@DSTREIT.COM



B E D R O O M S

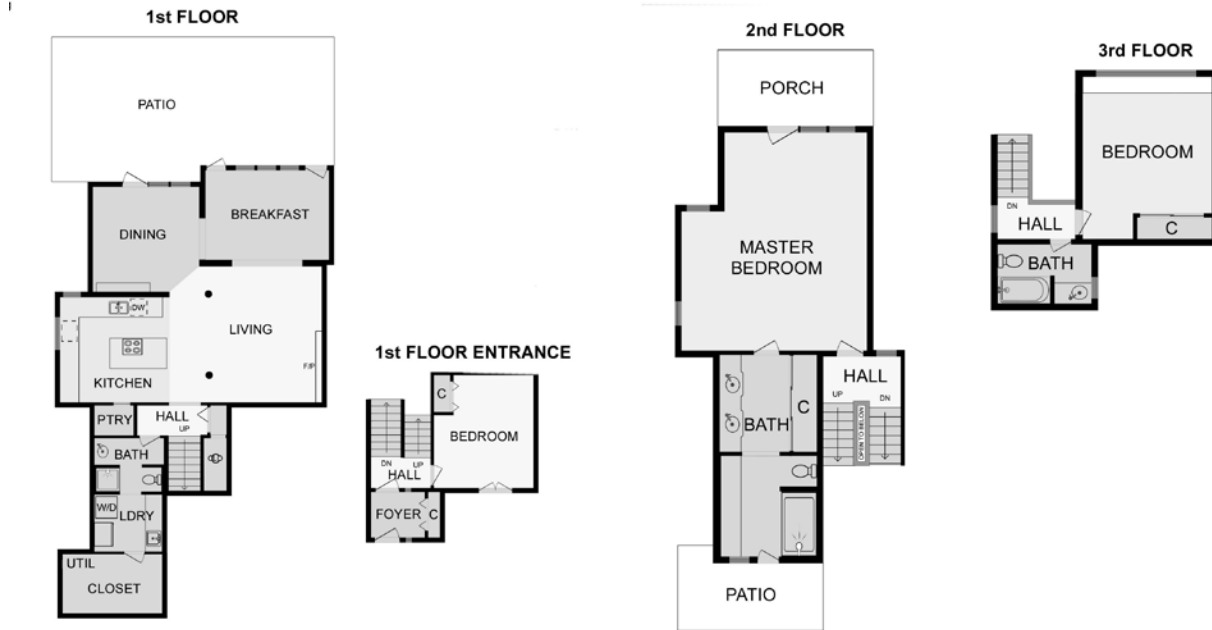
↪ Balconies & Decks ↪ Double Vanities



DETAILS

- 3 Bedrooms
- Baths: 1 Full, 2 Three Quarter
- 2560 SF
- Built in 1983
- Wood, Tile, Concrete Floors
- Frame, Stucco Construction *
- Flat, Modified Bitumen Roof
- 2 Off Street Parking Spaces
- 2 Fireplaces
- Electric Cooking
- Electric, Radiant In Floor Heating
- City Sewer
- City Water
- Internet: Cable, DSL
- HOA Fees: \$2072 Every 6 Months
- HOA Fees Cover: Community Area & Road Maintenance, Insurance
- Insulated Windows
- Landscaped
- Security System

*Buyer to Verify



Above floor plan provided by iGuide and may not be entirely accurate.

Plat depiction is for illustration purposes and may not be entirely accurate.

DARLENE STREIT

SANTA FE REAL ESTATE PROPERTY



DARLENE STREIT
 505.920.8001 • dstreit@dstreit.com
 Office: 417 E. Palace Avenue
 Santa Fe NM 87501

SantaFeRealEstateProperty.com

DarleneStreit.com

SantaFeLuxuryHomesandLand.com



View
Listing
Online

© Sotheby's International Realty, Inc. All rights reserved. Sotheby's International Realty® is a registered trademark. This material is based upon information which we consider reliable but because it has been supplied by third parties, we cannot represent that it is accurate or complete and it should not be relied upon as such. This offering is subject to errors, omissions, changes including price or withdrawal without notice. If your property is listed with a real estate broker, please disregard. It is not our intention to solicit the offerings of other real estate brokers. We are happy to work with them and cooperate fully. Operated by Sotheby's International Realty, Inc. Real estate agents affiliated with Sotheby's International Realty, Inc. are independent contractor sales associates and are not employees of Sotheby's International Realty, Inc. Equal Housing Opportunity. Sotheby's International Realty, 326 Grant Ave, Santa Fe, NM 87501, 505-988-2533.

Sotheby's
INTERNATIONAL REALTY