



34 N CLOUDSTONE DR



5 Bedroom • 4 Bath • 4,828 SF • \$1,295,000 • MLS# 202101741



LIVING & DINING

⇨ Abundant Natural Light ⇨ Viga Ceilings ⇨ Large Kitchen



34 N CLOUDSTONE DR

5 Bedroom • 4 Bath • 4,828 SF • \$1,295,000 • MLS# 202101741

4 bedroom 2.5 bath Pueblo style adobe home plus 1 bedroom 1 bath frame/stucco free-standing casita with striking Sandia and Jemez mountain views. On 24+ private acres. Classic Santa Fe design with thick, curved plaster walls, hand-carved beams, built-in benches, decorative tile accents and brick and flagstone floors. Spacious, open floor plan with multiple gathering spaces with great flow for entertaining. Dramatic and artful design. The home centers around a large common space with a high ceiling and lots of light. The living room is down a level while the kitchen, dining, and social areas are open to the living room below. Kitchen has an eat-in area with built-in benches and a wood-burning stove. The master suite enjoys its own wing of the home and includes an ensuite bath with jetted tub and separate shower. Three bedrooms and bath are along a sun filled passive solar hall. The third guest bedroom offers flex space as a studio or office. Custom skylights throughout. Recently updated 983 sq. ft. casita with full kitchen, kiva, washer/dryer, bedroom, full bath and its own porch and patio. Salt water hot tub included. Convenient location within minutes to Canyon Road, Museum Hill, theaters, shopping, medical and restaurants.

DARLENE STREIT | 505.920.8001 | DSTREIT@DSTREIT.COM



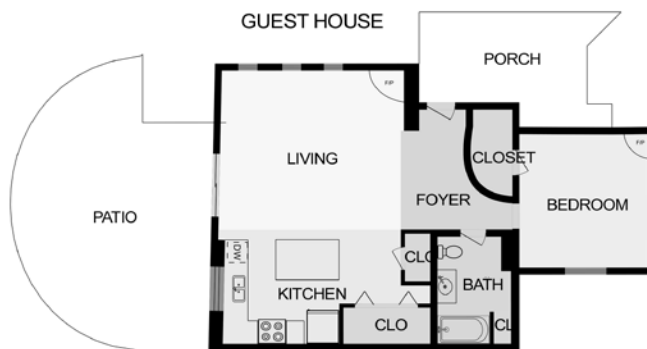
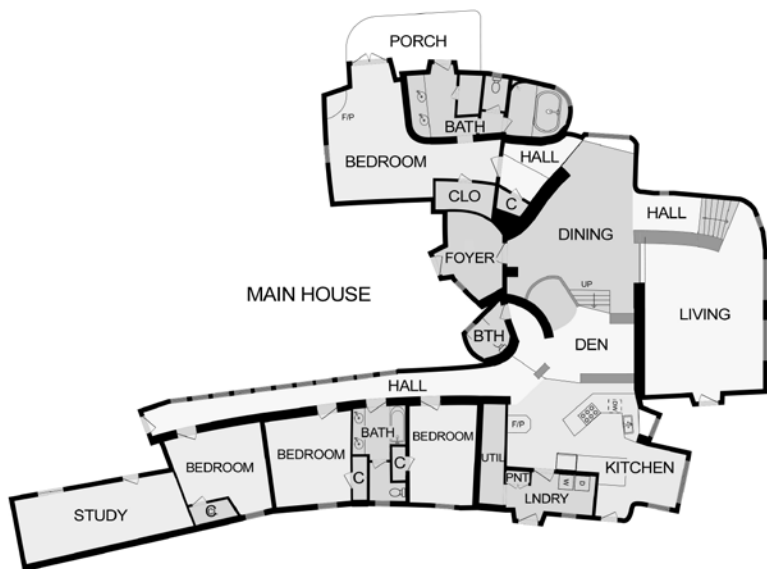
B E D R O O M S

↪ Master Ensuite ↪ Passive Solar Hall ↪ Guest House



DETAILS

- 5 Bedrooms
- Baths: 3 Full, 1 Half
- Main House 3845 SF
Guest House 983 SF
- 24.23 Acres
- Built in 1977
- Adobe and possibly other materials,
Frame, Stucco Construction *
- Flat Roof
- 2 Garage Spaces
- 4 Fireplaces
- Gas Cooking
- Gas, Passive Solar, Propane, Radiant
In Floor Heating
- Septic
- Shared Well
- Internet: DSL, Satellite, Wireless
- HOA Fees: From 2020,
- approx. \$1200 Per Year
- HOA Fees Cover: Road & Gate
Maintenance
- Salt Water Hot Tub
- Landscaped
- Insulated Windows
- *Buyer to Verify



Above floor plan provided by iGuide and may not be entirely accurate.

Plat depiction is for illustration purposes and may not be entirely accurate.



DARLENE STREIT

SANTA FE REAL ESTATE PROPERTY



DARLENE STREIT
505.920.8001 ▪ dstreit@dstreit.com
 Office: 417 E. Palace Avenue
 Santa Fe NM 87501

SantaFeRealEstateProperty.com

DarleneStreit.com

SantaFeLuxuryHomesandLand.com



View
Listing
Online

© Sotheby's International Realty, Inc. All rights reserved. Sotheby's International Realty® is a registered trademark. This material is based upon information which we consider reliable but because it has been supplied by third parties, we cannot represent that it is accurate or complete and it should not be relied upon as such. This offering is subject to errors, omissions, changes including price or withdrawal without notice. If your property is listed with a real estate broker, please disregard. It is not our intention to solicit the offerings of other real estate brokers. We are happy to work with them and cooperate fully. Operated by Sotheby's International Realty, Inc. Real estate agents affiliated with Sotheby's International Realty, Inc. are independent contractor sales associates and are not employees of Sotheby's International Realty, Inc. Equal Housing Opportunity. Sotheby's International Realty, 326 Grant Ave, Santa Fe, NM 87501, 505-988-2533.

Sotheby's
INTERNATIONAL REALTY