



171 COUNTY RD 74



6 Bedroom • 6 Bath • 3,852 SF • \$1,350,000 • MLS# 202101585



LIVING & DINING

↻ View Portal ↻ Excellent Entertaining Space ↻ Large Kitchen



171 COUNTY RD 74

6 Bedroom • 6 Bath • 3,852 SF • \$1,350,000 • MLS# 202101585

Stunningly unobstructed views await in this 3-bedroom, 2.5 bath home and 3-bedroom, 2 bath guest house on 4.03 natural acres. Poised on a ridgeline to maximize views, the main home features generous portals and outside living areas, and majestic landscapes from nearly every window. The open living, dining, and kitchen area is the perfect entertaining space. A kiva fireplace, brick floors, and viga and beam ceiling add Santa Fe style. The large kitchen has an island, good storage space, and a breakfast bar. There are several built-in shelves and nichos throughout. The split bedroom plan offers privacy, and all bedrooms have en-suite baths. A brick floored porch is anchored by a kiva fireplace and leads onto a view deck. The guest house has a living room, kitchenette, a 2-sided porch, and more amazing views. All this natural beauty, and only minutes from the Plaza, and all of Santa Fe's amenities.

DARLENE STREIT | 505.920.8001 | DSTREIT@DSTREIT.COM



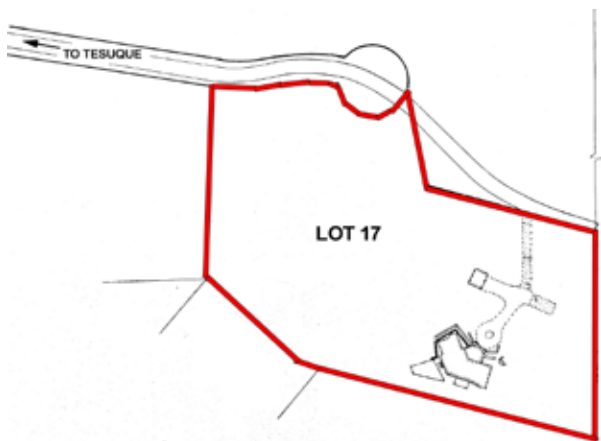
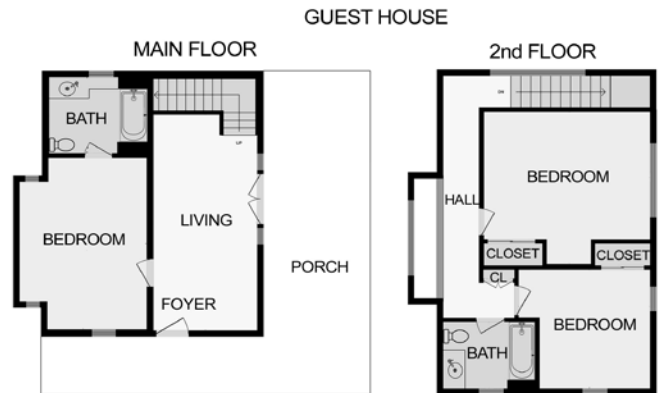
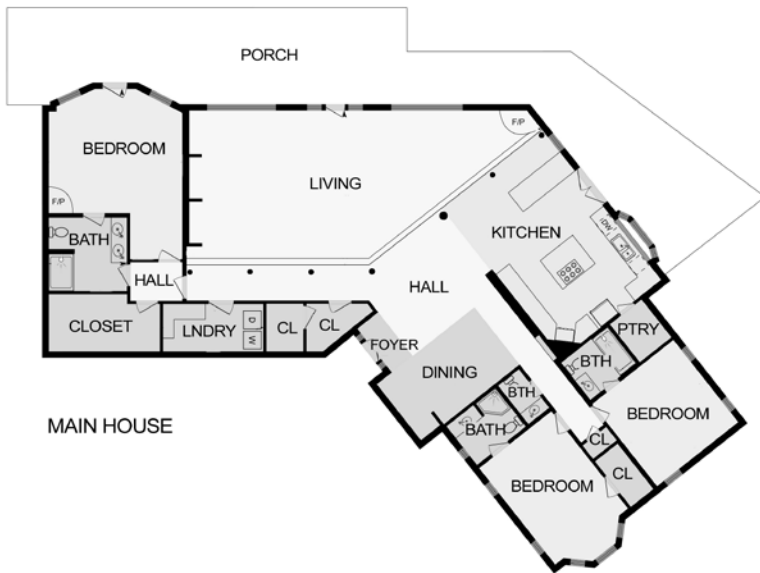
B E D R O O M S

⇒ Split Bedroom Plan ⇒ En-suite Baths ⇒ Guest House



DETAILS

- 6 Bedrooms
- Baths: 2 Full, 3 Three Quarter, 1 Half
- Main House 2772 SF
Built in 1988
- Guest House 1080 SF
Built in 2016
- 4.03 Acres
- Wood, Tile, Carpet, Brick Floors
- Frame, Stucco Construction *
- Flat, Membrane Roof
- 3 Fireplaces
- Electric Cooking
- Propane, Ductless (MiniSplit),
Hot Water, Radiant In Floor Heating
- Evaporative Central, Refrigerator
(Ductless) Cooling
- Septic
- Private Well
- Internet: DSL, Satellite, Wireless
- Insulated Windows
- Landscaped
- Security System
- *Buyer to Verify



Above floor plan provided by iGuide and may not be entirely accurate.

Plat depiction is for illustration purposes and may not be entirely accurate.

DARLENE STREIT

SANTA FE REAL ESTATE PROPERTY



DARLENE STREIT

505.920.8001 • dstreit@dstreit.com

Office: 417 E. Palace Avenue

Santa Fe NM 87501

SantaFeRealEstateProperty.com

DarleneStreit.com

SantaFeLuxuryHomesandLand.com



View
Listing
Online

© Sotheby's International Realty, Inc. All rights reserved. Sotheby's International Realty® is a registered trademark. This material is based upon information which we consider reliable but because it has been supplied by third parties, we cannot represent that it is accurate or complete and it should not be relied upon as such. This offering is subject to errors, omissions, changes including price or withdrawal without notice. If your property is listed with a real estate broker, please disregard. It is not our intention to solicit the offerings of other real estate brokers. We are happy to work with them and cooperate fully. Operated by Sotheby's International Realty, Inc. Real estate agents affiliated with Sotheby's International Realty, Inc. are independent contractor sales associates and are not employees of Sotheby's International Realty, Inc. Equal Housing Opportunity. Sotheby's International Realty, 326 Grant Ave, Santa Fe, NM 87501, 505-988-2533.

Sotheby's
INTERNATIONAL REALTY