



21 LUCERO RD



3 Bedroom • 2 Bath • 1,607 SF • \$450,000 • MLS# 202101471



LIVING & DINING

⇨ Dining Area ⇨ Light-Filled Kitchen ⇨ Sunroom



21 LUCERO RD

3 Bedroom • 2 Bath • 1,607 SF • \$450,000 • MLS# 202101471

This 3 bedroom 2 bath single-level home is sited on 1.38 acres in the desirable community of Eldorado. With Sangre de Cristo and Sandia Mountain views, this 1607+/- sf home has been recently updated. The light-filled kitchen has beautiful granite countertops, stainless appliances, custom cabinetry with wood cornice detail, and a large island for gathering. Dining area opens to the 32' sunroom, ideally designed for use in all seasons. Enjoy mountain and sunset views from the expansive outside patio, perfect for entertaining or al fresco dining while enjoying the vistas. One guest bedroom has en-suite bath. The generous shared bath is fully updated with a rain shower and custom tile. Other features include energy efficient passive solar design, pellet stove, an attached 2 car garage, and large patios. Enjoy the starry skies and peaceful open spaces of Eldorado, with its restaurants, outdoor recreation, community school and shopping close by, while only minutes from the museums, medical services, cultural and historic amenities of Santa Fe.

DARLENE STREIT | 505.920.8001 | DSTREIT@DSTREIT.COM



B E D R O O M S

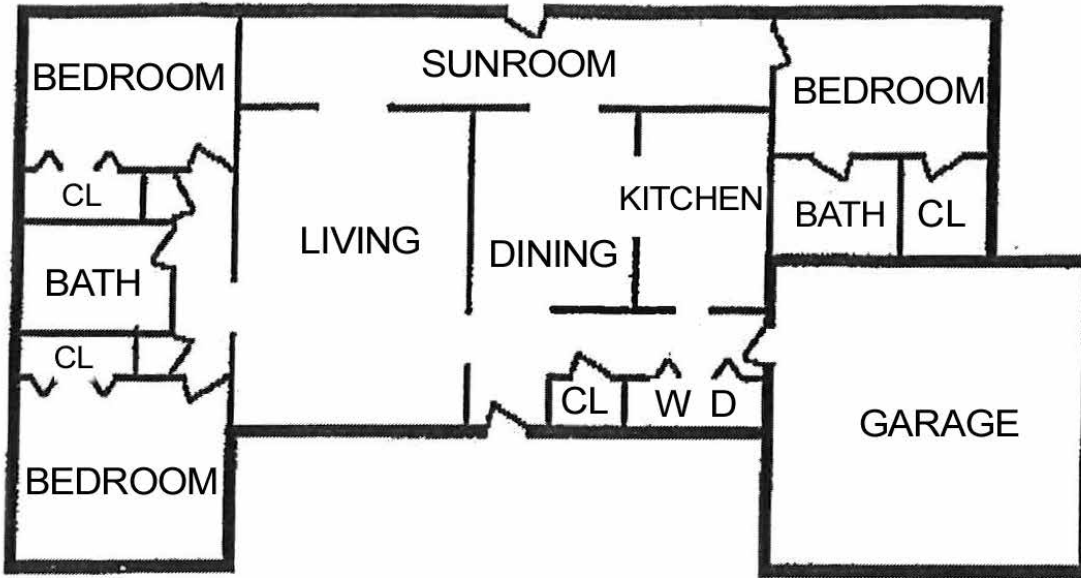
↻ Rain Shower & Custom Tile ↻ Large Patios



DETAILS

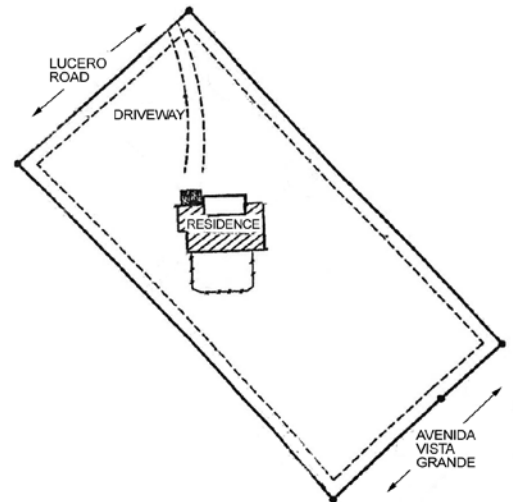
- 3 Bedrooms
- 2 Three Quarter Baths
- 1607 SF
- 1.380 Acres
- Frame, Stucco Construction *
- Flat, Tar & Gravel Roof
- 2 Garage Spaces
- 1 Fireplace
- Electric Cooking
- Electric Baseboard, Passive Solar Heating
- Septic
- Private Well
- Internet: Cable, DSL
- HOA Fees: From 2020, \$550 Per Year
- HOA Fees Cover: Community Area & Road Maintenance, Recreational Facilities
- Insulated Windows
- Landscaped

*Buyer to Verify



Floor plan is for illustration purposes and may not be entirely accurate.

Plat depiction is for illustration purposes and may not be entirely accurate.



DARLENE STREIT

SANTA FE REAL ESTATE PROPERTY



DARLENE STREIT
505.920.8001 • dstreit@dstreit.com
 Office: 417 E. Palace Avenue
 Santa Fe NM 87501

SantaFeRealEstateProperty.com

DarleneStreit.com

SantaFeLuxuryHomesandLand.com



View
Listing
Online

© Sotheby's International Realty, Inc. All rights reserved. Sotheby's International Realty® is a registered trademark. This material is based upon information which we consider reliable but because it has been supplied by third parties, we cannot represent that it is accurate or complete and it should not be relied upon as such. This offering is subject to errors, omissions, changes including price or withdrawal without notice. If your property is listed with a real estate broker, please disregard. It is not our intention to solicit the offerings of other real estate brokers. We are happy to work with them and cooperate fully. Operated by Sotheby's International Realty, Inc. Real estate agents affiliated with Sotheby's International Realty, Inc. are independent contractor sales associates and are not employees of Sotheby's International Realty, Inc. Equal Housing Opportunity. Sotheby's International Realty, 326 Grant Ave, Santa Fe, NM 87501, 505-988-2533.

Sotheby's
INTERNATIONAL REALTY