



601 W SAN MATEO UNIT 176



2 Bedroom • 2.5 Bath • 1,140 SF • \$345,000 • MLS# 202101283





## LIVING & DINING

↔ Open Concept Living/Dining ↔ High Beamed Ceilings ↔ Well Appointed Kitchen





# 601 W SAN MATEO UNIT 176

2 Bedroom • 2.5 Bath • 1,140 SF • \$345,000 • MLS# 202101283

Conveniently located 2 bedroom 2.5 bath condo-townhouse at San Mateo de Santa Fe. End unit with Sangre de Cristo views and park-like setting. Open concept living/dining area with access to a back patio. Ideal for entertaining. Living room has high beamed ceilings, lighted niche, tile floors, and fireplace. Kitchen is well appointed with granite countertops, Bosch appliances, and hickory cabinets. 2 master suites on the second floor including one with a balcony. Each has a full en-suite bath, plus a bath downstairs. Walk-in closets, walk-out deck, jetted tub, plus full-size laundry hookups. The community of San Mateo de Santa Fe has many amenities including an outdoor seasonal pool, fitness center, clubhouse, separate dog run, and BBQ gazebos throughout the 11.2-acre landscaped property. Enjoy a low-maintenance lifestyle just a few minutes from the historic Santa Fe Plaza, with close proximity to public transportation, museums, medical, restaurants and shopping.

DARLENE STREIT | 505.920.8001 | DSTREIT@DSTREIT.COM



## B E D R O O M S

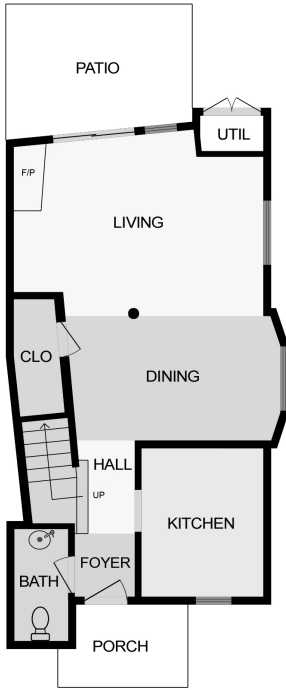
↔ Two Master Suites ↔ Balcony ↔ Walk-In Closets



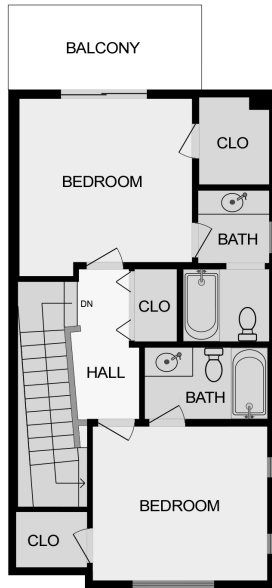
# DETAILS

- 2 Bedrooms
- Baths: 2 Full, 1 Half
- 1140 SF
- Built in 2006
- Frame, Stucco Construction \*
- Flat, Tar & Gravel Roof
- 1 Fireplace
- Gas Cooking
- Forced Air Heating
- Refrigerator, Central Cooling
- City Sewer
- City Water
- Internet: Cable
- HOA Fees: From 2020- \$220 Per Month
- HOA Fees Cover: Insurance, Security, Recreational Facilities; Exterior Building, Community Area, & Road Maintenance
- Insulated Windows

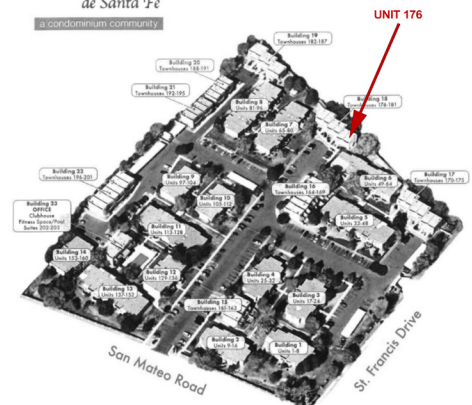
\*Buyer to Verify



1st FLOOR



2nd FLOOR



Above floor plan provided by iGuide and may not be entirely accurate.

Plat depiction is for illustration purposes and may not be entirely accurate.

**DARLENE STREIT**

SANTA FE REAL ESTATE PROPERTY



**DARLENE STREIT**  
 505.920.8001 • dstreit@dstreit.com  
 Office: 417 E. Palace Avenue  
 Santa Fe NM 87501

SantaFeRealEstateProperty.com

DarleneStreit.com

SantaFeLuxuryHomesandLand.com



View Listing Online

© Sotheby's International Realty, Inc. All rights reserved. Sotheby's International Realty® is a registered trademark. This material is based upon information which we consider reliable but because it has been supplied by third parties, we cannot represent that it is accurate or complete and it should not be relied upon as such. This offering is subject to errors, omissions, changes including price or withdrawal without notice. If your property is listed with a real estate broker, please disregard. It is not our intention to solicit the offerings of other real estate brokers. We are happy to work with them and cooperate fully. Operated by Sotheby's International Realty, Inc. Real estate agents affiliated with Sotheby's International Realty, Inc. are independent contractor sales associates and are not employees of Sotheby's International Realty, Inc. Equal Housing Opportunity. Sotheby's International Realty, 326 Grant Ave, Santa Fe, NM 87501, 505-988-2533.

**Sotheby's**  
 INTERNATIONAL REALTY