



117 TESUQUE RIDGE



6 Bedroom • 7 Bath • 13,779 SF • \$7,000,000 • MLS #202100779



LIVING & DINING

↻ 13 Fireplaces ↻ Formal Dining Room ↻ Gourmet Kitchen



117 TESUQUE RIDGE

6 Bedroom • 7 Bath • 13,779 SF • \$7,000,000 • MLS #202100779

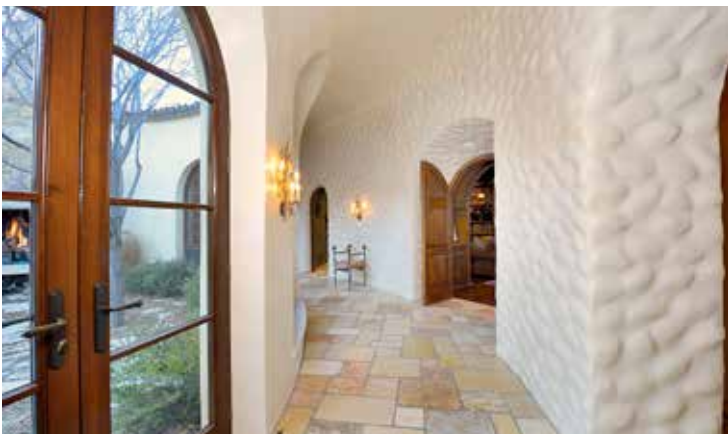
Exceptional 6 bedroom 7 bath custom-designed and built residence and guesthouse expertly sited on 5.7 acres in the prestigious gated community of Tesuque Ridge Ranch. An air of grandeur pervades the nearly 14,000-square-foot manor, yet every space is warm and welcoming. The heart of the home is a generous kitchen and den with a fireplace, a breakfast area, an adjoining portal, and an awe-inspiring view of the Sangre de Cristo mountains. The thoughtful design includes magnificent formal living and dining rooms, a handsome library, and private bedroom wings for owners and guests. Surfaces of lustrous plaster and cool antique Jerusalem stone contribute to the regal ambience, while earthy reclaimed walnut, hickory, and mesquite add warmth and depth. A third-generation German stonemason crafted mantels for the home's 13 fireplaces. Enveloping the residence are a number of phenomenal outdoor living spaces, each of which has been positioned for the utmost enjoyment of the views and tranquil surroundings. In addition to the main residence, there is a detached two-bedroom guesthouse. This is an ideal property for reunions and large-scale entertaining. Highlighted features include a finished basement, oversized 3-car garage and mature landscaping. A serene location in the foothills north of Santa Fe yet only minutes to the historic Plaza, the Opera and Canyon Road.

DARLENE STREIT | 505.920.8001 | DSTREIT@DSTREIT.COM



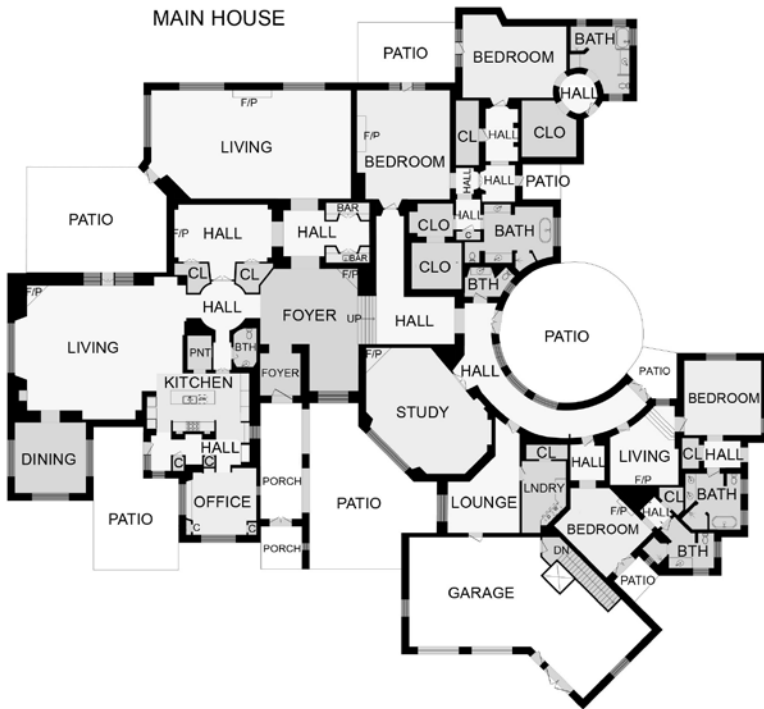
B E D R O O M S

⇨ Private Bedroom Wings ⇨ Bedroom Fireplaces ⇨ Library



DETAILS

- 6 Bedrooms
- Baths: 3 Full, 2 Three Quarter, 2 Half
- Main House 12,537 SF
Guest House 1,242 SF
- 5.71 Acres
- Built in 2006
- 3 Garage Spaces
- Heated Garage
- Brick Floors
- Gas, Electric Cooking
- Adobe and possibly other materials, Rock, Stucco Construction *
- Flat, Membrane, Modified Bitumen, Pitched, Tile Roofs
- 13 Fireplaces
- Radiant In Floor, Radiant Hot Water Baseboard Heating
- Central Cooling
- Septic
- Private Well
- Internet: Satellite, Wireless (NM Surf)
- HOA Fees: \$425 Per Quarter
- HOA Fees Cover: Road Maintenance, Security
- Security System
- Insulated Windows
- Drip/Sprinkler System
- Water Purification
- Gated Community
- *Buyer to Verify



Above floor plan provided by iGuide and may not be entirely accurate.

Plat depiction is for illustration purposes and may not be entirely accurate.

DARLENE STREIT

SANTA FE REAL ESTATE PROPERTY



DARLENE STREIT
505.920.8001 • dstreit@dstreit.com
 Office: 417 E. Palace Avenue
 Santa Fe NM 87501

SantaFeRealEstateProperty.com
DarleneStreit.com
SantaFeLuxuryHomesandLand.com



View
Listing
Online

© Sotheby's International Realty, Inc. All rights reserved. Sotheby's International Realty® is a registered trademark. This material is based upon information which we consider reliable but because it has been supplied by third parties, we cannot represent that it is accurate or complete and it should not be relied upon as such. This offering is subject to errors, omissions, changes including price or withdrawal without notice. If your property is listed with a real estate broker, please disregard. It is not our intention to solicit the offerings of other real estate brokers. We are happy to work with them and cooperate fully. Operated by Sotheby's International Realty, Inc. Real estate agents affiliated with Sotheby's International Realty, Inc. are independent contractor sales associates and are not employees of Sotheby's International Realty, Inc. Equal Housing Opportunity. Sotheby's International Realty, 326 Grant Ave, Santa Fe, NM 87501, 505-988-2533.

Sotheby's
INTERNATIONAL REALTY