



3507 PAA RD - TBB*



3 Bedroom • 2 Bath • 1700 SF • \$499,000 • MLS# 202004635



LIVING & DINING

↪ Formal Dining Room ↪ Well-Designed Kitchen ↪ Breakfast Bar



3507 PAA RD

3 Bedroom • 2 Bath • 1700 SF • \$499,000 • MLS# 202004635

TO-BE-BUILT. Centrally located 3 bedroom 2 bath to-be-built single level home in the community of Kachina Ridge. Thoughtful design and custom finishes such as solid wood doors, cherry cabinets, wood floors and stone in all the wet areas. Off the formal dining area is a well-designed kitchen with a double sink, breakfast bar, and plenty of storage. In addition, there is an outdoor patio for expanded entertaining and al fresco dining. The spacious master suite has a walk-in closet and a large master bath with a built-in shower and a free-standing tub. One of the two guest bedrooms could function easily as an office or studio. Energy efficient with super-insulated walls and ceilings, on demand hot water, plus top of the line HVAC system, a 40,000 BTU gas fireplace in the living room and a HERS 60 rating. Two car attached garage. Close to schools, medical, shopping, and restaurants with easy access to the historic Santa Fe Plaza.

*** Photos are of a completed home of the same model**

DARLENE STREIT | 505.920.8001 | DSTREIT@DSTREIT.COM



B E D R O O M S

↔ Master Suite ↔ Free-Standing Tub ↔ Walk-In Closet



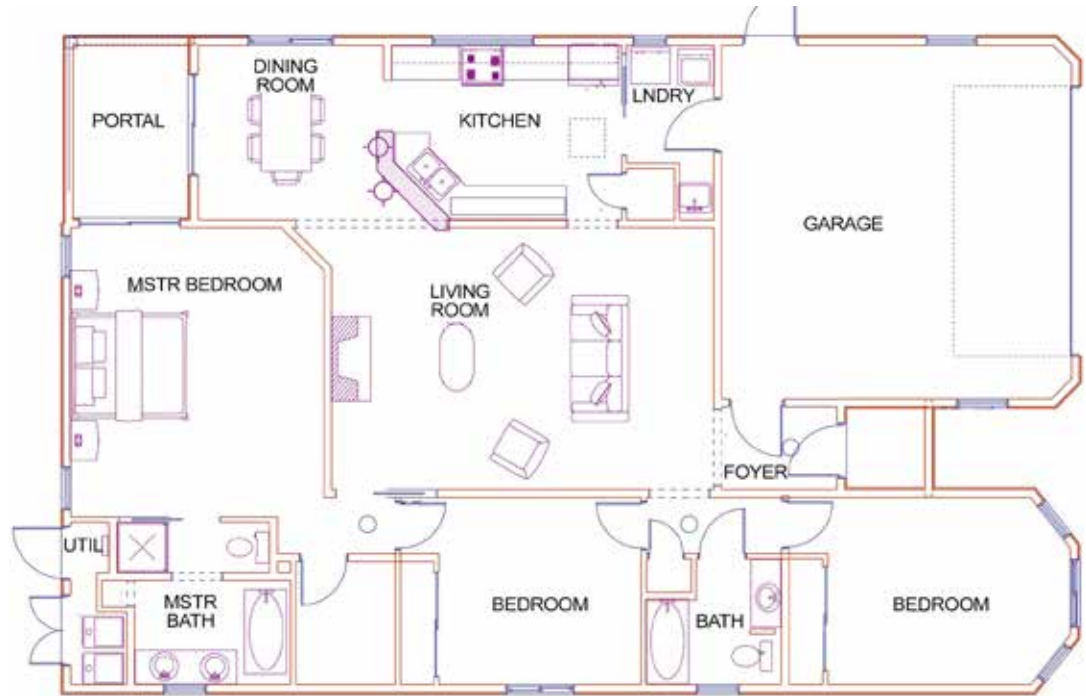
DETAILS

- 3 Bedrooms
- 2 Full Baths
- 1700 SF
- 0.122 Acre
- To Be Built
- Wood, Stone Floors
- Frame, Stucco Construction *
- Flat Roof

- 2 Garage Spaces
- 1 Fireplace
- Forced Air Heating
- Refrigerator, Central Cooling
- City Sewer
- City Water
- Internet: Cable, DSL
- HOA Fees: \$100 Per Year

- HOA Fees Cover: Community Area & Road Maintenance
- EnergyStar Appliances
- Tankless Hot Water
- Recirc Pump for Hot Water

*Buyer to Verify



Floor plan measurements may not be entirely accurate.

Plat depiction is for illustration purposes and may not be entirely accurate.

DARLENE STREIT

SANTA FE REAL ESTATE PROPERTY



DARLENE STREIT

505.920.8001 • dstreit@dstreit.com

Office: 417 E. Palace Avenue

Santa Fe NM 87501

SantaFeRealEstateProperty.com

DarleneStreit.com

SantaFeLuxuryHomesandLand.com



View
Listing
Online

© Sotheby's International Realty, Inc. All rights reserved. Sotheby's International Realty® is a registered trademark. This material is based upon information which we consider reliable but because it has been supplied by third parties, we cannot represent that it is accurate or complete and it should not be relied upon as such. This offering is subject to errors, omissions, changes including price or withdrawal without notice. If your property is listed with a real estate broker, please disregard. It is not our intention to solicit the offerings of other real estate brokers. We are happy to work with them and cooperate fully. Operated by Sotheby's International Realty, Inc. Real estate agents affiliated with Sotheby's International Realty, Inc. are independent contractor sales associates and are not employees of Sotheby's International Realty, Inc. Equal Housing Opportunity. Sotheby's International Realty, 326 Grant Ave, Santa Fe, NM 87501, 505-988-2533.

Sotheby's
INTERNATIONAL REALTY