







## LIVING & DINING

✧ Saltillo Tile Floors ✧ Kiva Fireplace ✧ Chef's Kitchen





# 26 ALONDRA RD

3 Bedroom • 2 Bath • 2694 SF • \$595,000 • MLS# 202004427

Inviting 3 bedroom 2 bath Pueblo style home on 2+ acre greenbelt lot in Eldorado with Sangre de Cristo mountain views. Iconic Santa Fe and artisanal details abound with Saltillo tile floors, vigas and beams, gold-hued kiva, custom hand-painted media cabinet and built-in cabinets, and two tailored hidden desks and shelving. Chef's kitchen smartly remodeled in 2015 is appointed with a Kitchen Aid gas/electric range, Sharp microwave drawer, quarter sawn oak cabinets, soft close drawers and cabinets, and roll out under counter trash and recycling bins, granite countertops, a breakfast nook with a built-in media cabinet and wood floors. Both dining areas have access to an outdoor flagstone patio with landscaping and views. A perfect spot for al fresco dining! Large master suite with stylish fireplace, California closet, walk-out to private patio and luxurious bath with dual vanities, soaking jetted tub and walk-in shower. Third bedroom offers flex space as a studio, media room or office. Many recent improvements such as new TPO roof (2019) with skylights updated with UV protection and metal canales; new stucco (2020); Rheem HVAC with updated vent systems installed (2019); Navien tankless water heater (2019); and new Overhead Door garage door (2020). Oversized 2-car garage. Eldorado is a desirable community featuring miles of maintained trails, a community pool, tennis courts, a community center, horse stables, shopping and easy access to downtown Santa Fe.

DARLENE STREIT | 505.920.8001 | DSTREIT@DSTREIT.COM



## B E D R O O M S

↻ Master Suite Fireplace ↻ Soaking Tub ↻ Dual Vanities



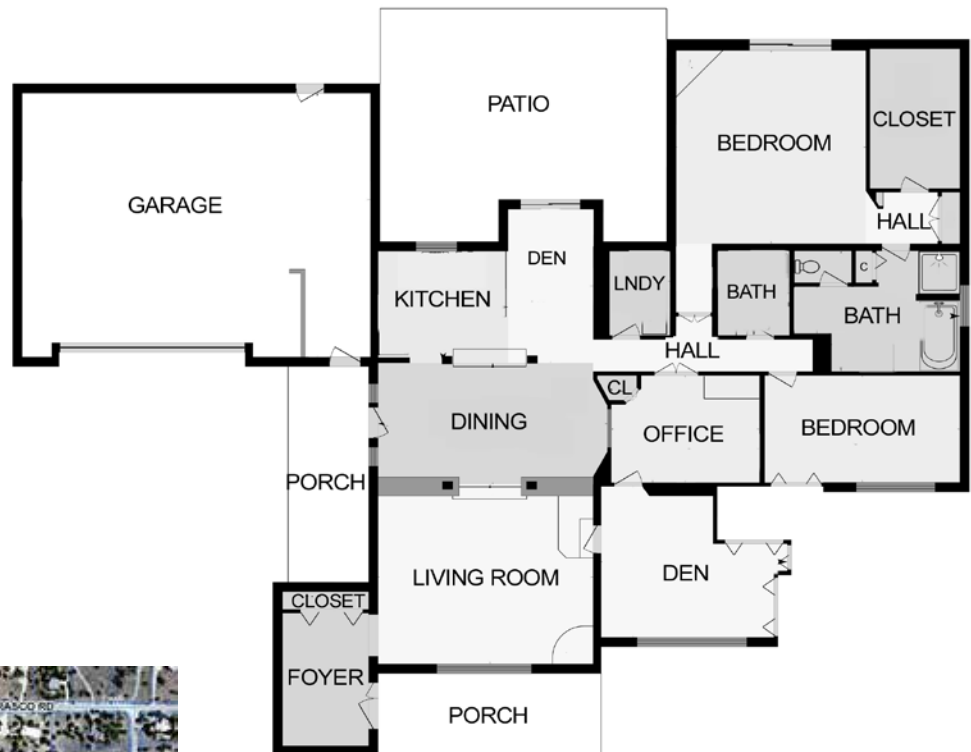
# DETAILS

- 3 Bedrooms
- 2 Full Baths
- 2694 SF
- 2.06 Acres
- Wood, Carpet, Tile Floors
- Frame, Stucco Construction \*
- Flat, Membrane Roof
- 2 Garage Spaces

- 3 Fireplaces
- Electric, Gas Cooking
- Forced Air, Gas Heating
- Refrigerator, Central Cooling
- Septic
- Community Water
- Internet: Cable, DSL
- HOA Fees: \$550 Per Year

- HOA Fees Cover: Community Area & Road Maintenance, Recreational Facilities
- Insulated Windows
- Landscaped
- Security System
- Drip/Sprinkler System

\*Buyer to Verify



*Above measurements provided by iGuide and may not be entirely accurate.*

*Plat depiction is for illustration purposes and may not be entirely accurate.*

**DARLENE STREIT**

SANTA FE REAL ESTATE PROPERTY



**DARLENE STREIT**

505.920.8001 • dstreit@dstreit.com

Office: 417 E. Palace Avenue

Santa Fe NM 87501

SantaFeRealEstateProperty.com

DarleneStreit.com

SantaFeLuxuryHomesandLand.com



View  
Listing  
Online

© Sotheby's International Realty, Inc. All rights reserved. Sotheby's International Realty® is a registered trademark. This material is based upon information which we consider reliable but because it has been supplied by third parties, we cannot represent that it is accurate or complete and it should not be relied upon as such. This offering is subject to errors, omissions, changes including price or withdrawal without notice. If your property is listed with a real estate broker, please disregard. It is not our intention to solicit the offerings of other real estate brokers. We are happy to work with them and cooperate fully. Operated by Sotheby's International Realty, Inc. Real estate agents affiliated with Sotheby's International Realty, Inc. are independent contractor sales associates and are not employees of Sotheby's International Realty, Inc. Equal Housing Opportunity. Sotheby's International Realty, 326 Grant Ave, Santa Fe, NM 87501, 505-988-2533.

**Sotheby's**  
INTERNATIONAL REALTY