



# 4-B PONDEROSA RIDGE LOT 1



## FEATURES

- Gated Community
- Horses Allowed

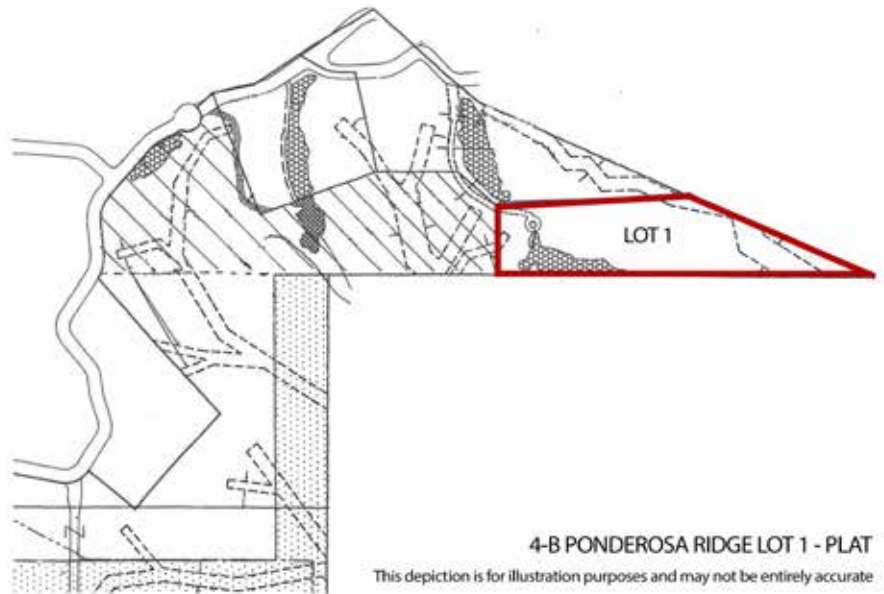


# 4-B PONDEROSA RIDGE LOT 1

7.00 Ac • \$225,000 • MLS# 202004156

**A**pproximately 7 acre residential lot in the gated Abajo Del Cielo with treetop vistas and high mountain views. A private wooded lot with recently cleared building location for maximum views. A shared well is already in place. Horses allowed. Close to St. John's College and Museum Hill with easy access to the Santa Fe Plaza..

- 7.00 Acres
- Septic Required
- Shared Well
- Horses Allowed
- Gated, Private Dirt Access Road
- Mountain Property
- Views



**DARLENE STREIT**

SANTA FE REAL ESTATE PROPERTY



**DARLENE STREIT**  
505.920.8001 • dstreit@dstreit.com  
Office: 417 E. Palace Avenue  
Santa Fe NM 87501

SantaFeRealEstateProperty.com  
DarleneStreit.com  
SantaFeLuxuryHomesandLand.com



View  
Listing  
Online

© Sotheby's International Realty, Inc. All rights reserved. Sotheby's International Realty® is a registered trademark. This material is based upon information which we consider reliable but because it has been supplied by third parties, we cannot represent that it is accurate or complete and it should not be relied upon as such. This offering is subject to errors, omissions, changes including price or withdrawal without notice. If your property is listed with a real estate broker, please disregard. It is not our intention to solicit the offerings of other real estate brokers. We are happy to work with them and cooperate fully. Operated by Sotheby's International Realty, Inc. Real estate agents affiliated with Sotheby's International Realty, Inc. are independent contractor sales associates and are not employees of Sotheby's International Realty, Inc. Equal Housing Opportunity. Sotheby's International Realty, 326 Grant Ave, Santa Fe, NM 87501, 505-988-2533.

**Sotheby's**  
INTERNATIONAL REALTY