

20 HOLLYHOCK CIRCLE



In Las Campanas



LIVING & DINING

↻ Open Layout ↻ Chef's Kitchen ↻ Sliding Glass Doors



20 HOLLYHOCK CIRCLE

4 Bedroom • 5 Bath • 5991 SF • \$2,500,000 • MLS# 202004015

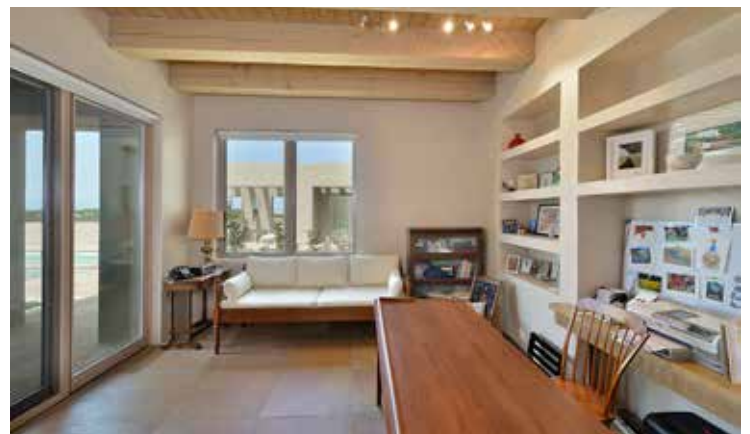
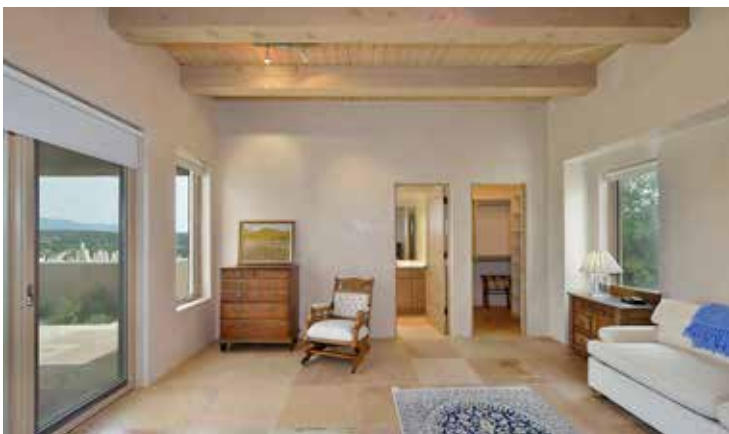
Located in the desirable community of Las Campanas, this spacious 4 bedroom 5 bath hilltop home designed by Rad Acton and built by Kim Dressell seamlessly blends southwestern and contemporary styles. The open layout, soaring ceilings, and sliding glass doors that open to a flagstone portico make this home perfect for entertaining. The chef's kitchen features granite countertops, a Wolf gas range, Miele steam oven, Sub-Zero refrigerator, a built-in desk and more. The wet bar, next to the kitchen, is equipped with a wine refrigerator and ice-maker. There are 3 ensuite bedrooms including the master suite which boasts a roomy walk-in closet, steam shower, jetted tub and dual WCs. The 600 sq. ft. fourth bedroom has its own exterior entrance and could be used as a studio. Special interior features include 5 gas Aqua Glass fireplaces, remote controlled window shades, built-in LED lighting, art nichos, central A/C and radiant heat. Outdoor features abound with a rose garden, 2 enclosed grassy areas perfect for pets, and 2 portals. Enjoy the 48-foot heated double lane lap pool with electric cover and attached spa. The property has an electric gate, a private gated front courtyard, and off-street parking. Stately design, high end finishes, plus spectacular 360-degree views of the Sangre de Cristo and Jemez Mountains as well as Sandia Peak. Easy access to all the cultural, culinary, and recreational amenities of Santa Fe.

DARLENE STREIT | 505.920.8001 | DSTREIT@DSTREIT.COM



B E D R O O M S

↔ Ensuite Bedrooms ↔ Fireplaces ↔ Master Suite

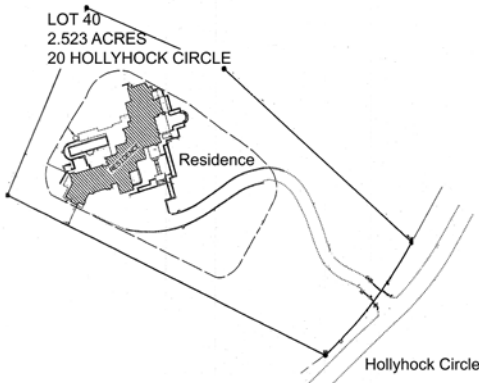
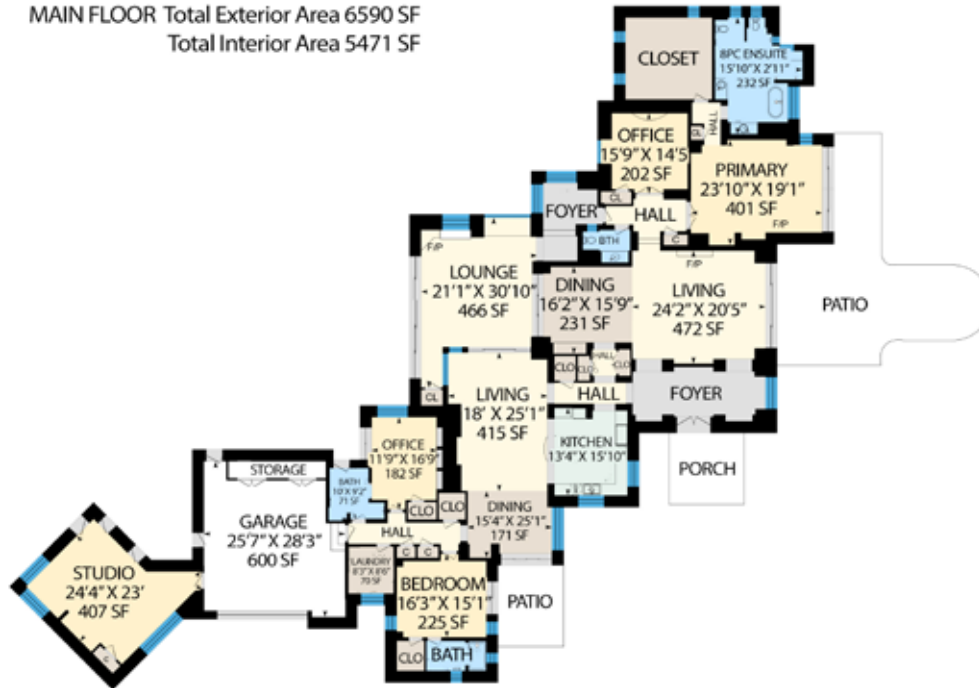


DETAILS

- 4 Bedrooms
- Baths: 1 Full, 2 Three Quarter, 2 Half
- Main House 5301 SF
Studio 600 SF
- 2.52 Acres
- Built in 2006
- Frame, Stucco Construction *
- Flat, Foam Roof
- 2 Garage Spaces
- 4 Off Street Parking Spaces
- 5 Fireplaces
- Gas Cooking
- Hot Water, Radiant In Floor Heating
- Refrigerator Central, Ductless Cooling
- Community Sewer
- Community Water
- Internet: Cable, DSL, Satellite Dish
- HOA Fees: \$2861 Per Year
- HOA Fees Cover: Community Area & Road Maintenance, Security

*Buyer to Verify

MAIN FLOOR Total Exterior Area 6590 SF
Total Interior Area 5471 SF



Above measurements provided by iGuide and may not be entirely accurate.

Plat depiction is for illustration purposes and may not be entirely accurate.

DARLENE STREIT

SANTA FE REAL ESTATE PROPERTY



DARLENE STREIT

505.920.8001 • dstreit@dstreit.com

Office: 417 E. Palace Avenue

Santa Fe NM 87501

SantaFeRealEstateProperty.com

DarleneStreit.com

SantaFeLuxuryHomesandLand.com



View
Listing
Online

© Sotheby's International Realty, Inc. All rights reserved. Sotheby's International Realty® is a registered trademark. This material is based upon information which we consider reliable but because it has been supplied by third parties, we cannot represent that it is accurate or complete and it should not be relied upon as such. This offering is subject to errors, omissions, changes including price or withdrawal without notice. If your property is listed with a real estate broker, please disregard. It is not our intention to solicit the offerings of other real estate brokers. We are happy to work with them and cooperate fully. Operated by Sotheby's International Realty, Inc. Real estate agents affiliated with Sotheby's International Realty, Inc. are independent contractor sales associates and are not employees of Sotheby's International Realty, Inc. Equal Housing Opportunity. Sotheby's International Realty, 326 Grant Ave, Santa Fe, NM 87501, 505-988-2533.

Sotheby's
INTERNATIONAL REALTY