



# GALISTEO RANCH



10 Bedroom • 10.5 Bath • 16,223 SF • \$16,500,000 • MLS#202003362





## LIVING & ENTERTAINING

⇒ Spanish Colonial Portal ⇒ Saltillo Tile Floors ⇒ Chef's Kitchen ⇒ Decorative Lighting





# GALISTEO RANCH

10 Bedrooms • 10 1/2 Baths • 16,223 SF • \$16,500,000 • MLS# 202003362

**G**alisteo Ranch. A rare opportunity to own this one of a kind, 6,173 acre ranch and extravagant hacienda. Strategically placed among 3,385 deeded acres and 2,278 leased acres of State of New Mexico ranch land south of Santa Fe, is the 13,223 square foot, 8 bedroom, 8.5 bath Pueblo Revival Style adobe hacienda and 3,000+ square foot, 2 bedroom, 2 bath guest home. The main hacienda compound wraps around a Spanish colonial, portal lined and landscaped courtyard and welcomes you into this unique home, abundant with vigas and beams, wood and Saltillo tile floors, kivas, decorative lighting, and numerous built-in bookcases and cabinets. The main floor alone has a modern chef's kitchen complete with an AGA cast-iron range, dining room, den, 2 offices/studies, and 7 bedrooms, including the master suite with its own dressing area. The upstairs is for relaxation, with its spacious great room, library, media room, plus an additional bedroom. The basement has 2 game rooms and abundant storage. The 3,000+ square foot guest home is the perfect addition when hosting large scale reunions and entertaining. Special features of this property include a tennis court, swimming pool, multiple portals and decks, and a 3-car garage. Wide open vistas and mountain views. A very private setting yet only 30 minutes from all of the cultural, culinary, and recreational amenities of Santa Fe.

DARLENE STREIT | 505.920.8001 | DSTREIT@DSTREIT.COM



## B E D R O O M S

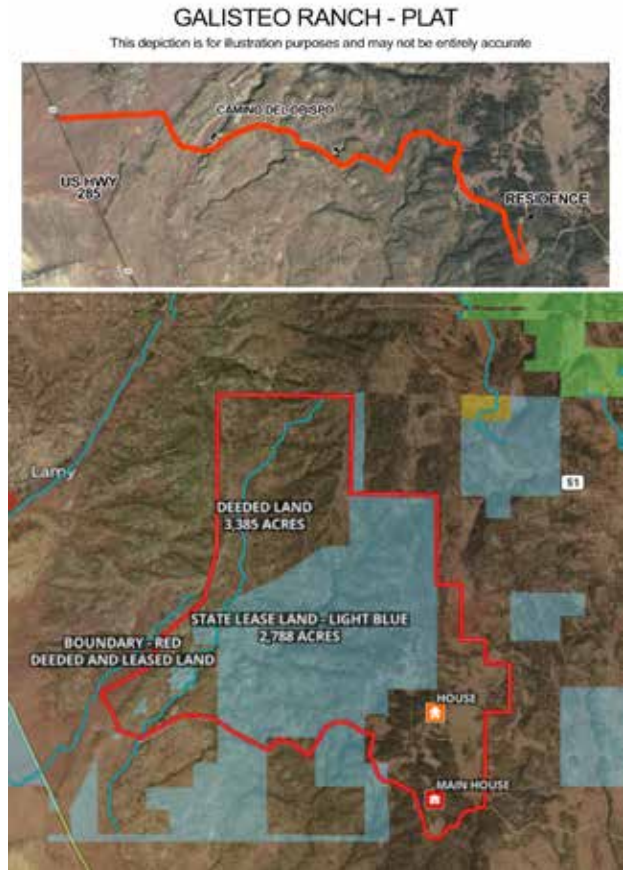
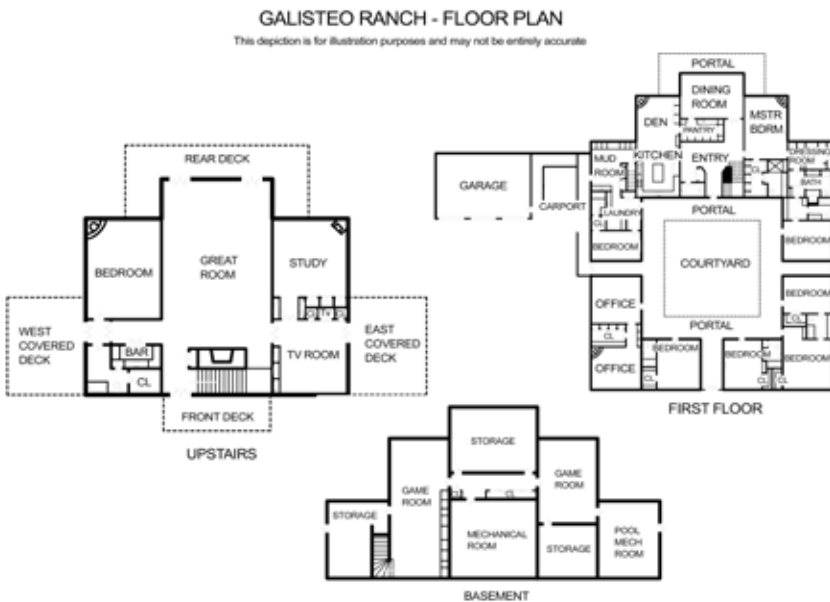
↻ Kiva Fireplaces   ↻ Master Suite Dressing Area   ↻ Viga & Beamed Ceilings



# DETAILS

- Main House- 8 Bedrooms  
7 Full, 1 Three Quarter, 1 Half Baths  
13,223 SF
- Guest House- 2 Bedrooms  
2 Full Baths  
3,000 SF
- 6,173 Acres
- Built in 1992
- Adobe & possibly other materials Construction \*
- Flat, Metal, Propanel, Pitched Roofs
- 3 Garage Spaces
- 6 Fireplaces
- Gas Cooking
- Forced Air, Propane Heating
- Central A/C
- Wood Floors
- Septic
- Private Well
- Internet: Fiber Optic
- Outdoor Pool
- Greenhouse
- Drip/Sprinkler System
- RV Parking Available
- 13 Stock Tanks for Animal Watering

\*Buyer to Verify



**DARLENE STREIT**

SANTA FE REAL ESTATE PROPERTY



**DARLENE STREIT**  
505.920.8001 • dstreit@dstreit.com  
Office: 417 E. Palace Avenue  
Santa Fe NM 87501

SantaFeRealEstateProperty.com  
DarleneStreit.com  
SantaFeLuxuryHomesandLand.com



View  
Listing  
Online

© Sotheby's International Realty, Inc. All rights reserved. Sotheby's International Realty® is a registered trademark. This material is based upon information which we consider reliable but because it has been supplied by third parties, we cannot represent that it is accurate or complete and it should not be relied upon as such. This offering is subject to errors, omissions, changes including price or withdrawal without notice. If your property is listed with a real estate broker, please disregard. It is not our intention to solicit the offerings of other real estate brokers. We are happy to work with them and cooperate fully. Operated by Sotheby's International Realty, Inc. Real estate agents affiliated with Sotheby's International Realty, Inc. are independent contractor sales associates and are not employees of Sotheby's International Realty, Inc. Equal Housing Opportunity. Sotheby's International Realty, 326 Grant Ave, Santa Fe, NM 87501, 505-988-2533.

**Sotheby's**  
INTERNATIONAL REALTY