



400 CIRCLE DRIVE



4 Bedroom • 3 Bath • 4,000 SF • \$1,395,000 • MLS# 202002312



LIVING & DINING

↻ Light-Filled ↻ Open Concept Design ↻ Wood Beamed Ceilings



400 CIRCLE DRIVE

4 Bedroom • 3 Bath • 4,000 SF • \$1,395,000 • MLS# 202002312

This 4 bedroom 3 bath classic late mid-century, architect-designed home is perched on desirable Circle Drive with city lights and mountain views. Enter into an open concept living and dining area with high wood beamed ceilings lined by windows for natural light. Additionally there is a large formal living room with high ceilings and a fireplace. This home is perfect for entertaining with a spacious gallery-like informal living area capable of accommodating large groups and has access to a gracious portal and landscaped garden perfect for al fresco dining. The kitchen has been stylishly updated with top appliances and stainless steel counters. The superior floor plan offers a separate master wing with a luxurious master bath and dressing area plus a separate study with a fireplace. Highlighted features include sound system, recirculating hot water throughout, mature gardens on drip irrigation system, a large 2-car attached garage with work space, and off-street parking for 4 cars. City water plus a private well. Located on almost 2.5 acres for maximum privacy. Just minutes to the Santa Fe Plaza, Canyon Road and Museum Hill. No HOA.

DARLENE STREIT | 505.920.8001 | DSTREIT@DSTREIT.COM



B E D R O O M S

↪ Master Wing ↪ Seperate Study ↪ Dressing Area



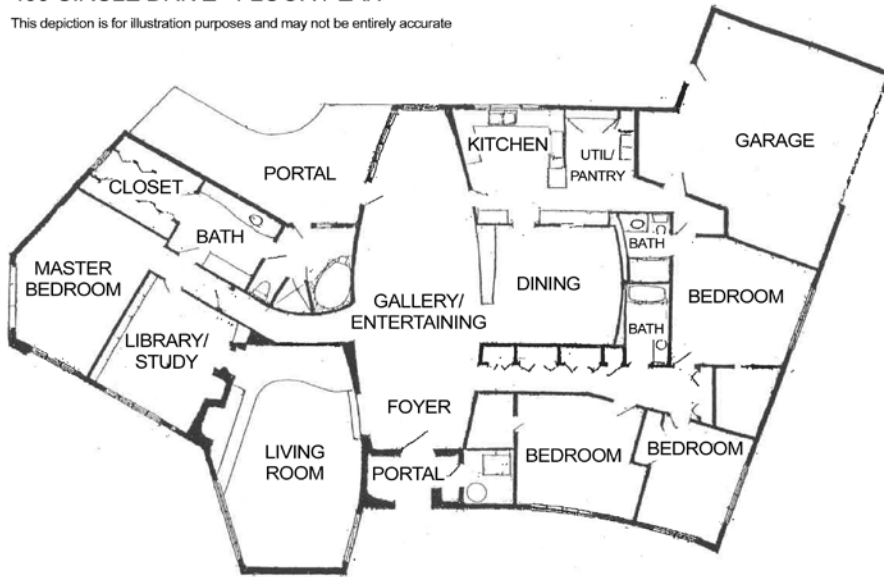
DETAILS

- 4 Bedrooms
- Baths: 2 Full, 1 Three Quarter
- 4000 Sq. Ft.
- 2.39 Acres
- Built in 1965
- Block, Frame, Stucco Construction *
- Flat, Modified Bitumen Roof
- 2 Garage Spaces
- 2 Fireplaces
- Wood, Stone, Vinyl, Carpet Floors
- Gas Cooking
- Gas, Baseboard (Hot Water) Heating
- Septic
- City Water, Private Well
- Internet: Cable
- Insulated Windows
- Landscaped
- Security System
- Drip/Sprinkler System
- EnergyStar Appliances
- Low Flow Fixtures

**Buyer to Verify*

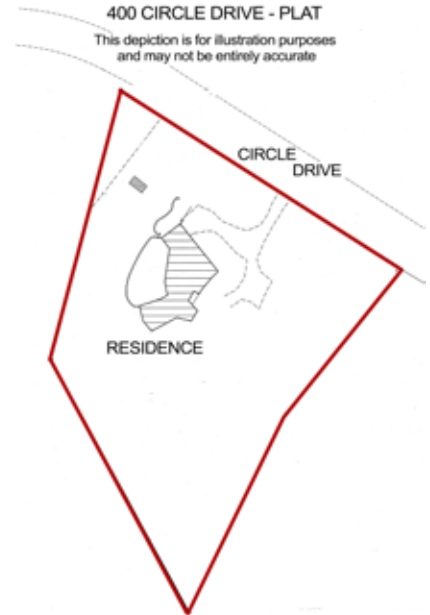
400 CIRCLE DRIVE - FLOOR PLAN

This depiction is for illustration purposes and may not be entirely accurate



400 CIRCLE DRIVE - PLAT

This depiction is for illustration purposes and may not be entirely accurate



DARLENE STREIT

SANTA FE REAL ESTATE PROPERTY



DARLENE STREIT
 505.920.8001 • dstreit@dstreit.com
 Office: 417 E. Palace Avenue
 Santa Fe NM 87501

SantaFeRealEstateProperty.com

DarleneStreit.com

SantaFeLuxuryHomesandLand.com



View
Listing
Online

© Sotheby's International Realty, Inc. All rights reserved. Sotheby's International Realty® is a registered trademark. This material is based upon information which we consider reliable but because it has been supplied by third parties, we cannot represent that it is accurate or complete and it should not be relied upon as such. This offering is subject to errors, omissions, changes including price or withdrawal without notice. If your property is listed with a real estate broker, please disregard. It is not our intention to solicit the offerings of other real estate brokers. We are happy to work with them and cooperate fully. Operated by Sotheby's International Realty, Inc. Real estate agents affiliated with Sotheby's International Realty, Inc. are independent contractor sales associates and are not employees of Sotheby's International Realty, Inc. Equal Housing Opportunity. Sotheby's International Realty, 326 Grant Ave, Santa Fe, NM 87501, 505-988-2533.

Sotheby's
INTERNATIONAL REALTY