

DARLENE STREIT

SANTA FE REAL ESTATE PROPERTY

505.920.8001 • dstreit@dstreit.com

417 E. Palace Avenue • Santa Fe NM 87501

7519 Old Santa Fe Trail

4 Bedroom • 5.5 Bath • 6689 SF

\$1,995,000 • MLS# 202002229



Rare opportunity to own this 4 bed 5.5 bath historic Maytag Estate set on 5.5 private, landscaped acres with sweeping sunset views. Architecturally designed with thick adobe walls, buttery plaster, multiple fireplaces, hand-carved beams, and wood and brick floors. Enter through a fabulous courtyard with fountains into a long foyer. Grand living area with rough-hewn vigas and beams, larger corner kiva, and doors to the outside. Stylish gourmet kitchen is appointed with high-end appliances, Sub-Zero refrigerator, and generous center island with seating. Split bedroom floor plan. Spacious master suite with bedroom/sitting area and kiva and modernized light-filled bathroom with double vanities, walk-in shower, and clawfoot tub. Each of the two guest rooms

has access to outdoor patios. Two extra rooms provide flexible space as a library and media room. In addition to the main house, there is an 1800 sq. ft. one bed, one bath guesthouse/studio and recently added caretakers' studio. This property is a horticulturalist's delight with a 20 x 28 ft greenhouse, prepared organic gardening beds, mature fruit trees, and automatic landscape watering. Sensational ramada with Viking BBQ, pizza oven and fireplace—a perfect setting for large-scale entertaining. Horses allowed. Estate includes a 2-stall barn and tack room, riding/training arena with gazebo, and riding/walking trails throughout property. Excellent location just minutes from Santa Fe Plaza, restaurants and retail.







Historic Maytag Estate

- 4 Bedrooms
- Baths: 3 Full, 2 Three Quarter, 1 Half
- Main House 4625 Sq. Ft.
- Guest House 1679 Sq. Ft.
- Studio 385 Sq. Ft.
- 5.55 Acres
- Built in 1975
- 2 Garage Spaces
- Flat, Foam Roof
- Adobe and possibly other materials , Frame, Stucco Construction *
- 6 Fireplaces
- Wood, Brick Floors
- Gas & Electric Cooking
- Propane, Baseboard (Hot Water), Radiant Heating
- Septic
- Private Well
- Internet: DSL
- Greenhouse
- Hot Tub
- Insulated Windows
- Security System
- Drip/Sprinkler System

**Buyer to Verify*

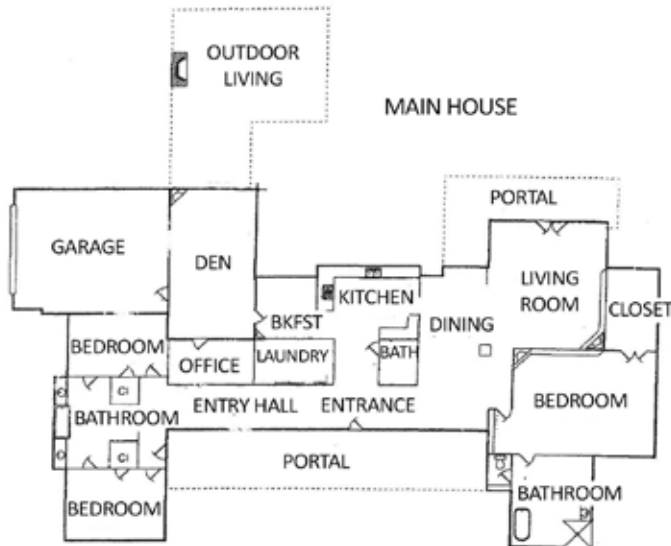


7519 Old Santa Fe Trail

4 Bedroom • 5.5 Bath • 6689 SF • \$1,995,000 • MLS# 202002229

7519 OLD SANTA FE TRAIL - FLOOR PLAN

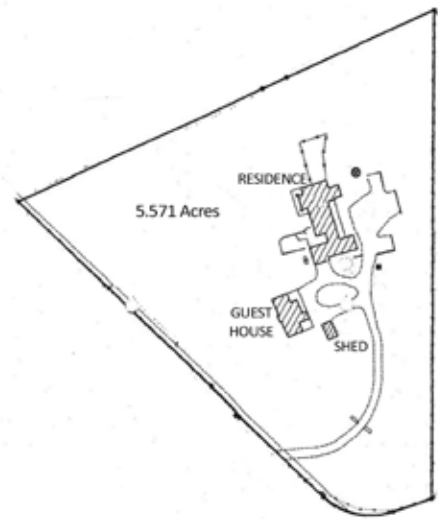
This depiction is for illustration purposes and may not be entirely accurate



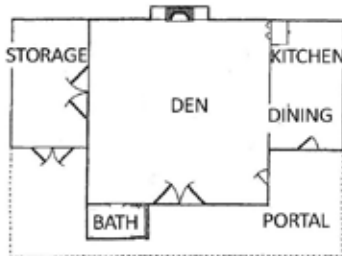
MAIN HOUSE

7519 OLD SANTA FE TRAIL - PLAT

This depiction is for illustration purposes and may not be entirely accurate



GUEST HOUSE



DARLENE STREIT

SANTA FE REAL ESTATE PROPERTY

505.920.8001 • dstreit@dstreit.com

417 E. Palace Avenue • Santa Fe NM 87501



LISTINGS

Scan this QR Code with your mobile phone's camera to view Darlene's and all listings online.

Or go to:
SantaFeRealEstateProperty.com

To view additional photos of this property visit: SantaFeRealEstateProperty.com

Sotheby's International Realty and the Sotheby's International Realty logo are registered (or unregistered) service marks used with permission. Operated by Sotheby's International Realty, Inc. Real estate agents affiliated with Sotheby's International Realty, Inc. are independent contractor sales associates and are not employees of Sotheby's International Realty, Inc.

This material is based on information which we consider reliable, but because it has been supplied by third parties, we cannot represent that it is accurate or complete, and it should not be relied upon as such. This offering is subject to errors, omissions, change of price, or withdrawal without notice. EQUAL HOUSING OPPORTUNITY.

Sotheby's

INTERNATIONAL REALTY

326 Grant Ave, Santa Fe, NM 87501
505-988-2533