

# DARLENE STREIT

SANTA FE REAL ESTATE PROPERTY

505.920.8001 • dstreit@dstreit.com

417 E. Palace Avenue • Santa Fe NM 87501

## 5 Calle Siete Casas

4 Bedroom / 3 Bath / 3119 SF

\$650,000 • MLS# 202002201



This 4 bedroom 3 bath home in Aldea has a broad west side deck with spectacular Jemez mountain views. Open concept living with meditation nook, well-appointed kitchen, split bedroom floor plan, spacious master suite, and 2 guest bedrooms complete the main home. There is an attached casita with kitchenette (no stove) with access from the outside. Surrounded by landscaped gardens, this

home enjoys many covered portals/patios and outdoor spaces for expanded living and entertaining. Concrete floors throughout. The community of Aldea which has 205 acres of perpetual open space, extensive walking trails, tennis courts and multiple parks is conveniently located just minutes from the Santa Fe Plaza and Canyon Road.







## Jemez Mountain Views in Aldea

- 4 Bedrooms
- 3 Full Baths
- Main House 2774 Sq. Ft.
- Studio 345 Sq. Ft.
- 0.181 Acre
- Built in 2006
- Frame, Stucco Construction \*
- Flat, Tar & Gravel Roof
- 2 Garage Spaces
- 3 Fireplaces
- Radiant In Floor Heating
- Evaporative Ducted Cooling
- City Sewer
- City Water
- Internet: Cable, DSL
- HOA Fees: \$150 Per Month
- HOA Fees Cover: Recreational Facilities, Road Maintenance
- Insulated Windows
- Hot Tub/Spa

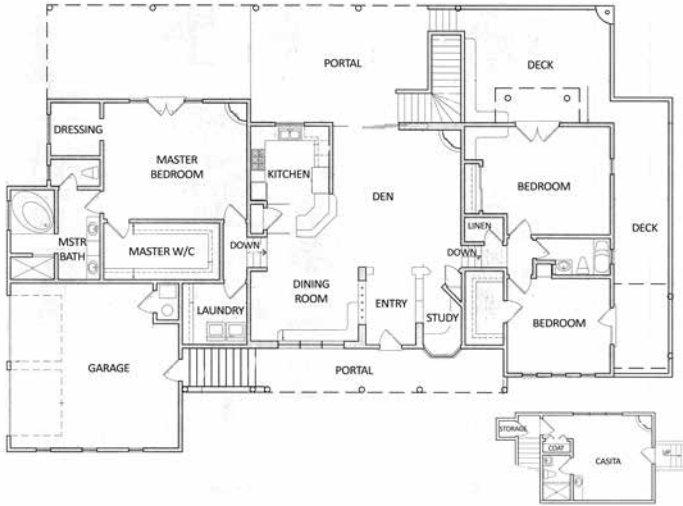
*\*Buyer to Verify*



# 5 Calle Siete Casas

4 Bedroom / 3 Bath / 3119 SF ▪ \$650,000 ▪ MLS# 202002201

5 CALLE SIETE CASAS - FLOOR PLAN  
This depiction is for illustration purposes and may not be entirely accurate



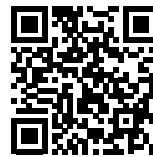
5 CALLE SIETE CASAS - PLAT  
This depiction is for illustration purposes and may not be entirely accurate



**DARLENE STREIT**

SANTA FE REAL ESTATE PROPERTY

505.920.8001 ▪ dstreit@dstreit.com  
417 E. Palace Avenue ▪ Santa Fe NM 87501



LISTINGS

Scan this QR Code with your mobile phone's camera to view Darlene's and all listings online.

Or go to:  
SantaFeRealEstateProperty.com

To view additional photos of this property visit: [SantaFeRealEstateProperty.com](http://SantaFeRealEstateProperty.com)

Sotheby's International Realty and the Sotheby's International Realty logo are registered (or unregistered) service marks used with permission. Operated by Sotheby's International Realty, Inc. Real estate agents affiliated with Sotheby's International Realty, Inc. are independent contractor sales associates and are not employees of Sotheby's International Realty, Inc.

This material is based on information which we consider reliable, but because it has been supplied by third parties, we cannot represent that it is accurate or complete, and it should not be relied upon as such. This offering is subject to errors, omissions, change of price, or withdrawal without notice. EQUAL HOUSING OPPORTUNITY.

**Sotheby's**

INTERNATIONAL REALTY

326 Grant Ave, Santa Fe, NM 87501  
505-988-2533