

# DARLENE STREIT

SANTA FE REAL ESTATE PROPERTY

505.920.8001 • dstreit@dstreit.com

417 E. Palace Avenue • Santa Fe NM 87501

## 501 Rio Grande #1-1

2 Bedroom • 2 1/2 Bath • 1638 SF

\$525,000 • MLS# 202002112



2 bedroom 2.5 bath Northern New Mexico style home just completed in 2020. Stylish, modern finishes. The open concept living/ dining area has tall ceilings, corner fireplace, laminate wood flooring and access to a covered deck with views of the Sangre de Cristo mountains. The kitchen is appointed with wood Shaker cabinets, granite countertops, a double sink, stainless steel appliances, and a 42 in high bar top. Master suite has door to a covered

deck and bath with double sinks, tub, and walk-in shower. A second large bedroom with ensuite bath and extra storage is located on the lower level. Highlighted features include a 2-car garage, high efficiency forced air and heat, on demand tankless water heater and TPO membrane roof. Super location, close to the Santa Fe Plaza, Railyard, galleries, museums, theaters and restaurants.







## Just Completed Northern New Mexico Style Condo

- 2 Bedrooms
- Baths: 1 Full, 1 Three Quarter, 1 Half
- 1638 Sq. Ft.
- Built in 2020
- Frame, Stucco Construction \*
- Flat, Membrane Roof
- 2 Garage Spaces
- 1 Fireplace
- Wood Floors
- Gas Cooking
- Forced Air Heating
- Central Cooling
- City Sewer
- City Water
- HOA Fees: \$335 Per Month
- HOA Fees Cover: Community Area, Exterior Building, Road, & Roof Maintenance
- Internet: Cable, DSL
- Insulated Windows
- EnergyStar Appliances
- Tankless Hot Water
- Low Flow Fixtures
- Recirc Pump for Hot Water
- HERS Rated

*\*Buyer to Verify*

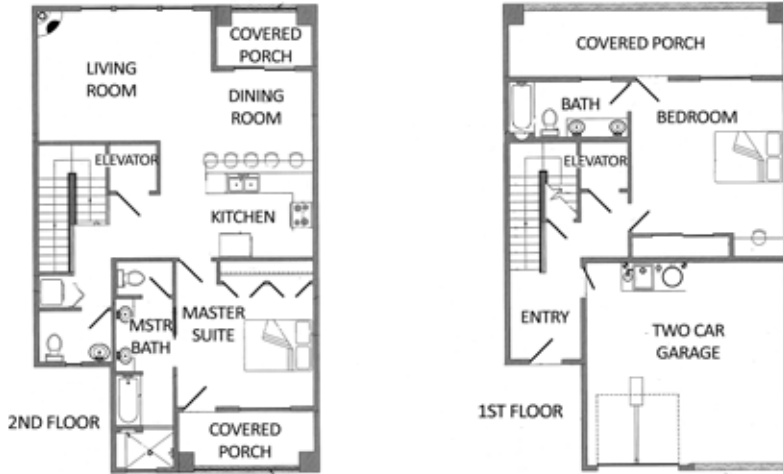


# 501 Rio Grande #I-1

2 Bedroom • 2 1/2 Bath • 1638 SF • \$525,000 • MLS# 202002112

## 501 RIO GRANDE I-1 - FLOOR PLAN

This depiction is for illustration purposes and may not be entirely accurate



## 501 RIO GRANDE #I-1 - PLAT

This depiction is for illustration purposes and may not be entirely accurate



**DARLENE STREIT**

SANTA FE REAL ESTATE PROPERTY

505.920.8001 • dstreit@dstreit.com

417 E. Palace Avenue • Santa Fe NM 87501



LISTINGS

Scan this QR Code with your mobile phone's camera to view Darlene's and all listings online.

Or go to:  
SantaFeRealEstateProperty.com

To view additional photos of this property visit: [SantaFeRealEstateProperty.com](http://SantaFeRealEstateProperty.com)

Sotheby's International Realty and the Sotheby's International Realty logo are registered (or unregistered) service marks used with permission. Operated by Sotheby's International Realty, Inc. Real estate agents affiliated with Sotheby's International Realty, Inc. are independent contractor sales associates and are not employees of Sotheby's International Realty, Inc.

This material is based on information which we consider reliable, but because it has been supplied by third parties, we cannot represent that it is accurate or complete, and it should not be relied upon as such. This offering is subject to errors, omissions, change of price, or withdrawal without notice. EQUAL HOUSING OPPORTUNITY.

**Sotheby's**

INTERNATIONAL REALTY

326 Grant Ave, Santa Fe, NM 87501  
505-988-2533