

6 Puma Circle

4 Bedroom / 6 Bath / 5876 SF • \$1,375,000 • MLS# 202001749

DARLENE STREIT

SANTA FE REAL ESTATE PROPERTY

505.920.8001 • dstreit@dstreit.com

417 E. Palace Avenue • Santa Fe NM 87501

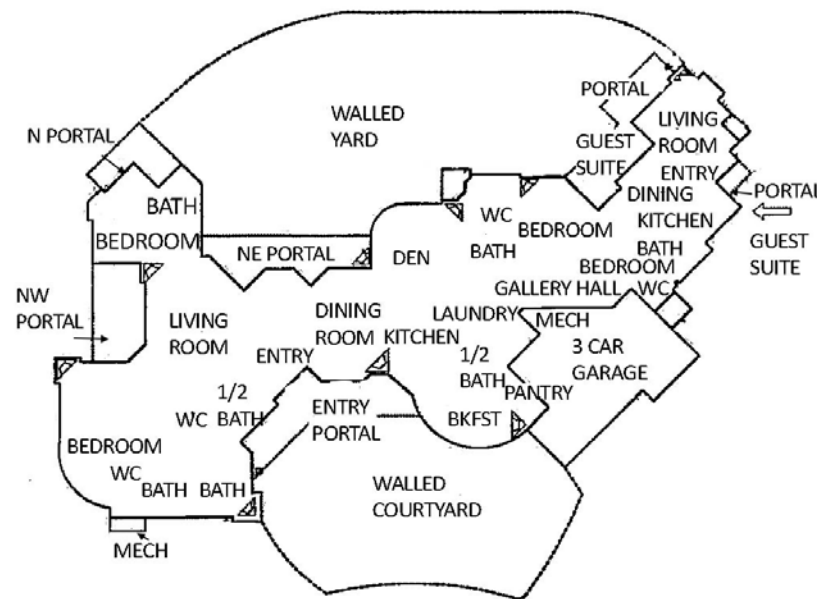
6 Puma Circle

4 Bedroom / 6 Bath / 5876 SF

\$1,375,000 • MLS# 202001749

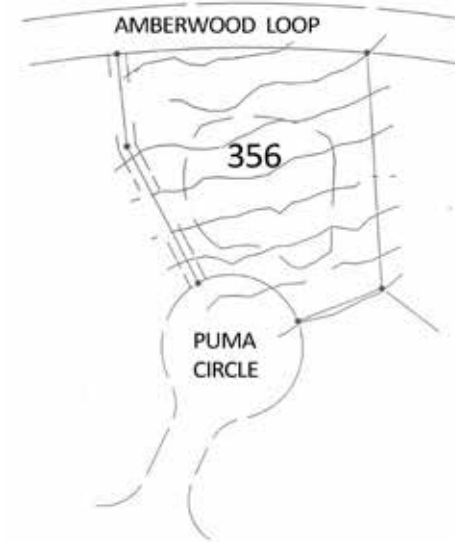
6 PUMA CIRCLE - FLOOR PLAN

This depiction is for illustration purposes and may not be entirely accurate



6 PUMA CIRCLE - PLAT

This depiction is for illustration purposes and may not be entirely accurate



Las Campanas classic 4 bedroom 6 bath Santa Fe Pueblo style home. Gracious, open, single level estate with multiple views of the Sangre De Cristo and Jemez mountains. Exterior is surrounded by hand hewn portales, enclosed gardens and central organic/stone water feature. 10-20' viga ceilings and kiva fireplaces grace the interior rooms. Master suite is conveniently located to provide privacy and separation from the other two bedrooms. Attached Casita has a separate entrance,

kitchen, dining area, and living room providing guests a relaxing retreat. The craftsmanship throughout this home is from a time when quality mattered; coved walls and archways, custom doors and windows throughout. Subtle tones and rich textures add to this elegant yet comfortable setting. Lovingly maintained with enhancing updates throughout.



DARLENE STREIT

SANTA FE REAL ESTATE PROPERTY

505.920.8001 • dstreit@dstreit.com

417 E. Palace Avenue • Santa Fe NM 87501



LISTINGS

Scan this QR Code with your mobile phone's camera to view Darlene's and all listings online.

Or go to: SantaFeRealEstateProperty.com

To view additional photos of this property visit: SantaFeRealEstateProperty.com

Sotheby's International Realty and the Sotheby's International Realty logo are registered (or unregistered) service marks used with permission. Operated by Sotheby's International Realty, Inc. Real estate agents affiliated with Sotheby's International Realty, Inc. are independent contractor sales associates and are not employees of Sotheby's International Realty, Inc.

This material is based on information which we consider reliable, but because it has been supplied by third parties, we cannot represent that it is accurate or complete, and it should not be relied upon as such. This offering is subject to errors, omissions, change of price, or withdrawal without notice. EQUAL HOUSING OPPORTUNITY.

Sotheby's

INTERNATIONAL REALTY

326 Grant Ave, Santa Fe, NM 87501

505-988-2533





Classic Pueblo Style Home in Las Campanas

- 4 Bedrooms
- Baths: 2 Full, 2 Three Quarter, 2 Half
- 5876 Sq. Ft.
- 1.59 Acres
- Built in 1995
- Adobe and possibly other materials, Frame, Stucco Construction *
- Flat Roof
- 3 Garage Spaces
- 10 Fireplaces
- Gas Cooking
- Radiant In Floor Heating
- Evaporative Cooling
- Community Sewer
- Community Water
- Internet: Cable, DSL, Wireless
- HOA Fees: \$2935 Per Year
- HOA Fees Cover: Community Area & Road Maintenance, Security
- Insulated Windows
- Landscaped
- Steam Shower
- Security System
- Drip/Sprinkler System

**Buyer to Verify*

