

2 Entrada Hermosa

4 Bedroom / 5 Bath / 3698 SF • \$1,550,000 • MLS# 202001738

DARLENE STREIT

SANTA FE REAL ESTATE PROPERTY

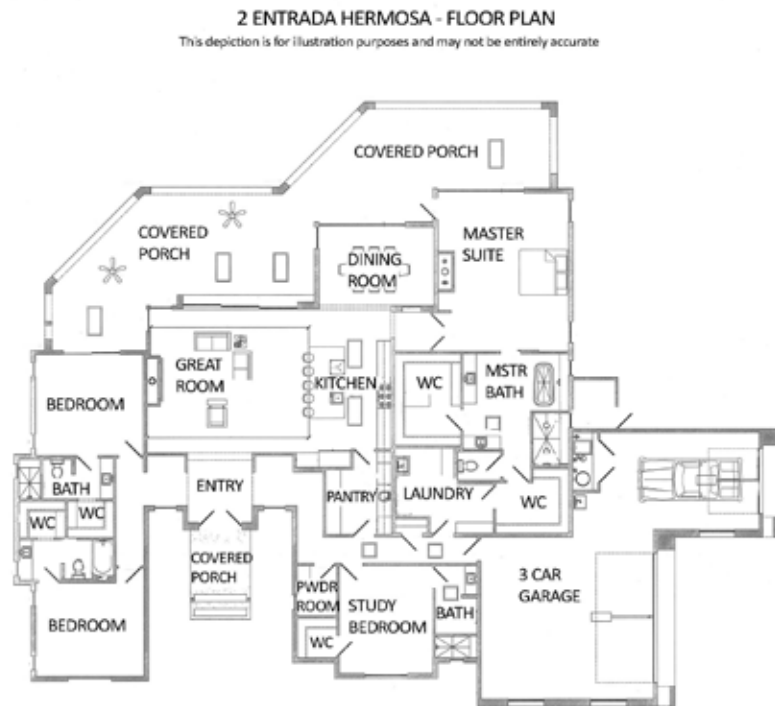
505.920.8001 • dstreit@dstreit.com

417 E. Palace Avenue • Santa Fe NM 87501

2 Entrada Hermosa

4 Bedroom / 5 Bath / 3698 SF

\$1,550,000 • MLS# 202001738



4-bedroom 4.5 bath contemporary under-construction home in the Estates VII of Las Campanas. Outstanding Sangre de Cristo, Atalaya and Sandia mountain views. Gallery entry into an open concept dramatic great room, dining and kitchen. Great room has access to a back portal for additional space for entertaining. Chef's kitchen will be appointed with a Sub-Zero refrigerator, 6-burner range with pot filler, a large center island with seating for about 6, and a walk-in pantry with stack shelves, microwave drawer and two-zone wine refrigerator. Spacious master suite has a sitting area, access to back portal and bath

with dual vanities, dual walk-in closets, walk-in shower with sunflower shower head, and a free-standing soaking tub. Split bedroom plan for maximum privacy. Three guest bedrooms with ensuite baths. Second guest bedroom offers flexible space for a studio or office. 3-car garage plus 4 off-street parking spaces. Las Campanas is a premier planned community tucked into the base of the Sangre de Cristo mountains with easy access to the Santa Fe Plaza, Canyon Road and Museum Hill.



DARLENE STREIT

SANTA FE REAL ESTATE PROPERTY

505.920.8001 • dstreit@dstreit.com

417 E. Palace Avenue • Santa Fe NM 87501



LISTINGS

Scan this QR Code with your mobile phone's camera to view Darlene's and all listings online.

Or go to:
SantaFeRealEstateProperty.com

To view additional photos of this property visit: SantaFeRealEstateProperty.com

Sotheby's International Realty and the Sotheby's International Realty logo are registered (or unregistered) service marks used with permission. Operated by Sotheby's International Realty, Inc. Real estate agents affiliated with Sotheby's International Realty, Inc. are independent contractor sales associates and are not employees of Sotheby's International Realty, Inc.

This material is based on information which we consider reliable, but because it has been supplied by third parties, we cannot represent that it is accurate or complete, and it should not be relied upon as such. This offering is subject to errors, omissions, change of price, or withdrawal without notice. EQUAL HOUSING OPPORTUNITY.

Sotheby's

INTERNATIONAL REALTY

326 Grant Ave, Santa Fe, NM 87501

505-988-2533





Under Construction, Contemporary Style Home in Las Campanas

- 4 Bedrooms
- Baths: 2 Full, 2 Three Quarter, 1 Half
- 3698 Sq. Ft.
- 1.99 Acres
- Under Construction
- Frame, Stucco Construction *
- Flat, Membrane Roof
- 3 Garage Spaces
- 2 Fireplaces
- Forced Air, Radiant In Floor Heating
- Central Cooling
- Community Sewer
- Community Water
- Internet: Cable, DSL
- HOA Fees: \$2856 Per Year
- HOA Fees Cover: Community Area & Road Maintenance, Security

**Buyer to Verify*

