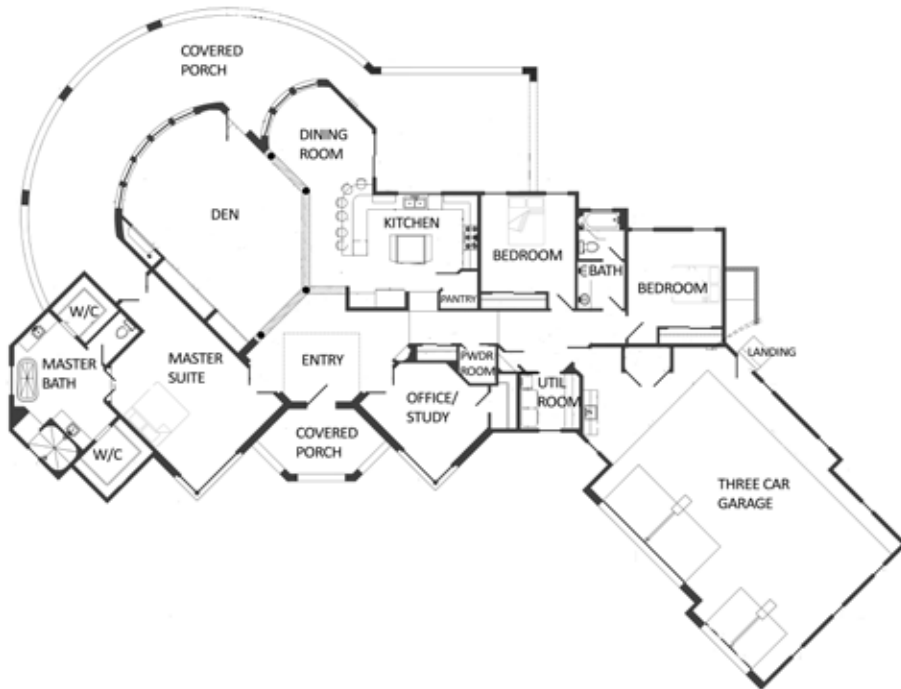


3 Clove Circle

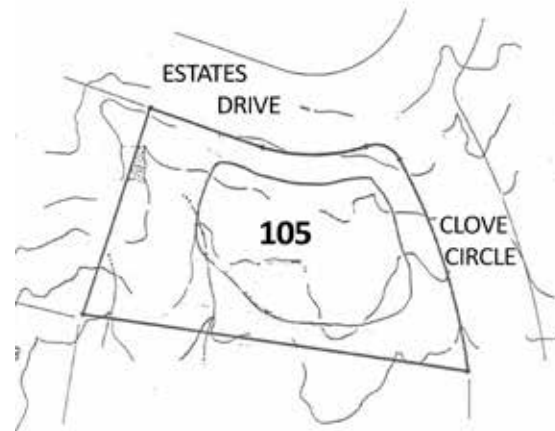
3 Bedroom / 3 Bath / 3220 SF ▪ \$1,200,000 ▪ MLS# 202001615

3 CLOVE CIRCLE - FLOOR PLAN
This depiction is for illustration purposes and may not be entirely accurate.



3 CLOVE CIRCLE - PLAT

This depiction is for illustration purposes and may not be entirely accurate.



DARLENE STREIT

SANTA FE REAL ESTATE PROPERTY

505.920.8001 ▪ dstreit@dstreit.com

417 E. Palace Avenue ▪ Santa Fe NM 87501

3 Clove Circle

3 Bedroom / 3 Bath / 3220 SF
\$1,200,000 ▪ MLS# 202001615



This 3-bedroom 2.5 bath single level soft contemporary under-construction home in Las Campanas offers magnificent mountain views. Entry leads into a dramatic open concept family/living/kitchen plan. The grand living room/den has a 12ft + ceiling, stone-faced fireplace, built-in banco, entertainment center and bookcases, and 5 large-scale windows looking out to a circular covered porch. The gourmet kitchen will be outfitted with a Sub-Zero refrigerator, double sink, dishwasher, microwave, range with pot filler, wine cooler, trash compactor, pantry with stack shelves, and a 42-inch high bar top with seating for six. The dining room has 3 large windows to the circular porch plus access to a second outdoor porch with 42-

inch high bar top and BBQ grill. This is a perfect home for large-scale entertaining. Spacious master suite has room for a sitting area and luxury bath with dual sinks, 4x4 ft skylight, snail shower, free-standing tub, and two walk-in closets. Split bedroom plan for maximum privacy. Guest bedrooms with shared bath are located in other wing of the home. In addition, there is a separate home office/study with wood ceilings. Highlighted features include diamond plaster walls, square beams, and 3-car attached garage. Las Campanas is conveniently located at the base of the Sangre de Cristo mountains with easy access to the Santa Fe Plaza.



DARLENE STREIT

SANTA FE REAL ESTATE PROPERTY

505.920.8001 ▪ dstreit@dstreit.com

417 E. Palace Avenue ▪ Santa Fe NM 87501



LISTINGS

Scan this QR Code with your mobile phone's camera to view Darlene's and all listings online.

Or go to:
SantaFeRealEstateProperty.com

To view additional photos of this property visit: SantaFeRealEstateProperty.com

Sotheby's International Realty and the Sotheby's International Realty logo are registered (or unregistered) service marks used with permission. Operated by Sotheby's International Realty, Inc. Real estate agents affiliated with Sotheby's International Realty, Inc. are independent contractor sales associates and are not employees of Sotheby's International Realty, Inc.

This material is based on information which we consider reliable, but because it has been supplied by third parties, we cannot represent that it is accurate or complete, and it should not be relied upon as such. This offering is subject to errors, omissions, change of price, or withdrawal without notice. EQUAL HOUSING OPPORTUNITY.

Sotheby's

INTERNATIONAL REALTY

326 Grant Ave, Santa Fe, NM 87501

505-988-2533





Under Construction, Single Level Home in Las Campanas

- 3 Bedrooms
- Baths: 2 Full, 1 Half
- 3220 Sq. Ft.
- 1.54 Acres
- Under Construction
- Frame, Stucco Construction *
- Membrane - TPO Roof
- Heated Garage
- 3 Garage Spaces
- 2 Fireplaces
- Wood, Tile Floors
- Forced Air, Radiant In Floor Heating
- Central Cooling
- Community Sewer
- Community Water
- Internet: Cable, DSL
- HOA Fees: \$2,861 per year
- HOA Fees Cover: Community Area & Road Maintenance, Security

**Buyer to Verify*

