

DARLENE STREIT

SANTA FE REAL ESTATE PROPERTY

505.920.8001 • dstreit@dstreit.com

417 E. Palace Avenue • Santa Fe NM 87501

1000 Marquez Place #C-6

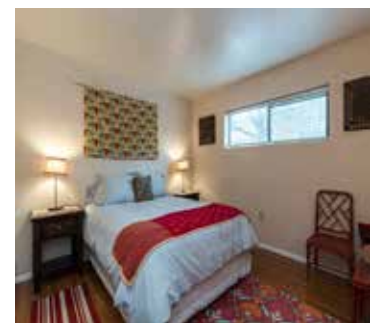
2 Bedroom / 1 Bath / 883 SF

\$215,000 • MLS# 202001585



Centrally located 2-bedroom 1 bath single level condo on the ground level with no upstairs neighbors. Living room leads into an open kitchen/dining area with access to a walled tiled patio. The two bedrooms are set to one side of this unit separated by a full bath. Design touches include contemporary track lighting, brush metal bathroom fixtures and tile or wood laminate floors throughout. There is a laundry facility onsite. End unit with easy

access from the tree-lined, gated courtyard area and off-street parking. Association dues include roof and exterior maintenance, water/sewer, exterior insurance and common area maintenance. Long term rentals are allowed. Perfect opportunity to own a pied-a-terre or investment property close to the Railyard, Santa Fe Plaza, Museum Hill, restaurants, theaters and shopping.

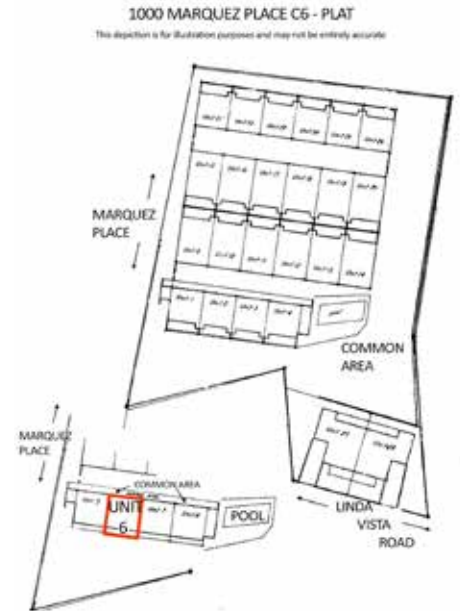


1000 Marquez Place #C-6

2 Bedroom / 1 Bath / 883 SF ▪ \$215,000 ▪ MLS# 202001585

Centrally Located Single Level Condo

- 2 Bedrooms
- 1 Full Bath
- 883 Sq. Ft.
- 0.02 Acre
- Built in 1951
- Block, Frame, Stucco Construction *
- Flat, Tar & Gravel Roof
- 1 Off Street Parking Space
- Electric Cooking
- Panel, Baseboard (Electric) Heating
- Evaporative Cooling
- City Sewer
- City Water



DARLENE STREIT

SANTA FE REAL ESTATE PROPERTY

505.920.8001 ▪ dstreit@dstreit.com

417 E. Palace Avenue ▪ Santa Fe NM 87501



LISTINGS

Scan this QR Code with your mobile phone's camera to view Darlene's and all listings online.

Or go to:
SantaFeRealEstateProperty.com

To view additional photos of this property visit: SantaFeRealEstateProperty.com

Sotheby's International Realty and the Sotheby's International Realty logo are registered (or unregistered) service marks used with permission. Operated by Sotheby's International Realty, Inc. Real estate agents affiliated with Sotheby's International Realty, Inc. are independent contractor sales associates and are not employees of Sotheby's International Realty, Inc.

This material is based on information which we consider reliable, but because it has been supplied by third parties, we cannot represent that it is accurate or complete, and it should not be relied upon as such. This offering is subject to errors, omissions, change of price, or withdrawal without notice. EQUAL HOUSING OPPORTUNITY.

Sotheby's

INTERNATIONAL REALTY

326 Grant Ave, Santa Fe, NM 87501
505-988-2533