

# 2092 Paseo Primero

4 Bedroom / 6 Bath / 4018 SF • \$749,000 • MLS# 202001568

# DARLENE STREIT

SANTA FE REAL ESTATE PROPERTY

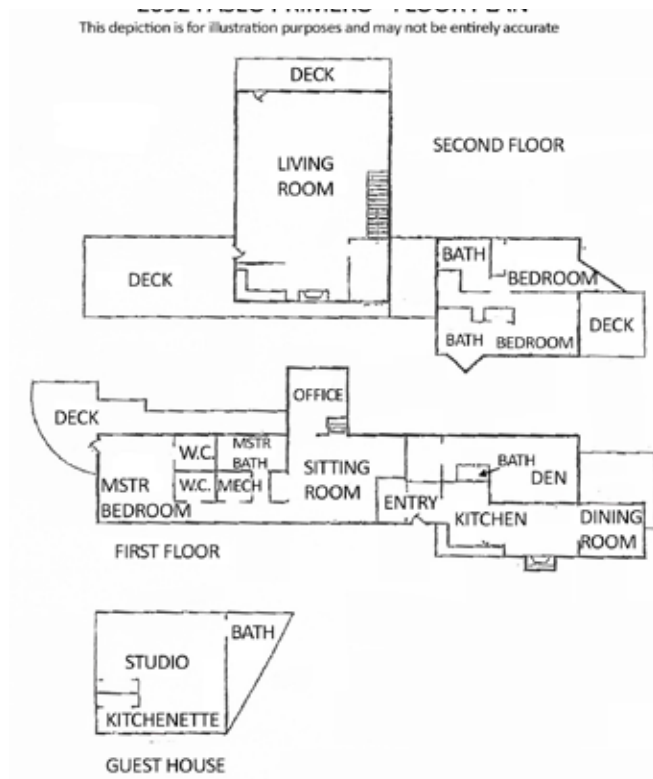
505.920.8001 • dstreit@dstreit.com

417 E. Palace Avenue • Santa Fe NM 87501

# 2092 Paseo Primero

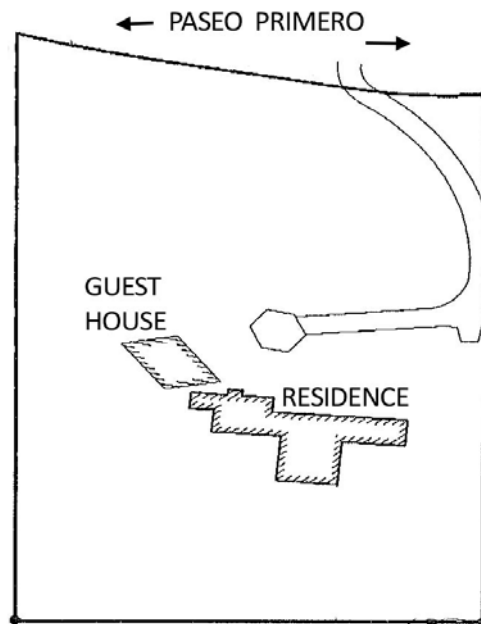
4 Bedroom / 6 Bath / 4018 SF

\$749,000 • MLS# 202001568



## 2092 PASEO PRIMERO - PLAT

This depiction is for illustration purposes and may not be entirely accurate



Located on a high mountain lot with incredible views, 4-bedroom 6 bath contemporary home with guest house and studio in Hyde Park Estates. A spacious split floor plan provides privacy within the home's unique spaces. The primary residence comprises 3 living areas, 3 bedrooms and 5 baths. A large living, gathering and entertaining area upstairs has a fireplace, butler's kitchen, dining area and outside deck. The chef's kitchen is appointed with high-end appliances, granite countertops, and fireplace. Windows and door to outside patio add light and ambiance to the formal dining room. Next to the master

suite is a sitting area with fireplace. Special finishes include custom hand-made carpets, wide-plank, pine wood floors and generous custom closets. The detached guest house has one bedroom, bath, kitchen, and private patio. With multiple decks, patios and stunning mountain views, this home is perfect for outdoor living, dining, and entertaining. Close to Ten Thousand Waves and a short drive to ski basin, yet less than 10 minutes to the historic Santa Fe Plaza and Canyon Road.



## DARLENE STREIT

SANTA FE REAL ESTATE PROPERTY

505.920.8001 • dstreit@dstreit.com

417 E. Palace Avenue • Santa Fe NM 87501



LISTINGS

Scan this QR Code with your mobile phone's camera to view Darlene's and all listings online.

Or go to:  
SantaFeRealEstateProperty.com

To view additional photos of this property visit: [SantaFeRealEstateProperty.com](http://SantaFeRealEstateProperty.com)

Sotheby's International Realty and the Sotheby's International Realty logo are registered (or unregistered) service marks used with permission. Operated by Sotheby's International Realty, Inc. Real estate agents affiliated with Sotheby's International Realty, Inc. are independent contractor sales associates and are not employees of Sotheby's International Realty, Inc.

This material is based on information which we consider reliable, but because it has been supplied by third parties, we cannot represent that it is accurate or complete, and it should not be relied upon as such. This offering is subject to errors, omissions, change of price, or withdrawal without notice. EQUAL HOUSING OPPORTUNITY.

## Sotheby's

INTERNATIONAL REALTY

326 Grant Ave, Santa Fe, NM 87501

505-988-2533







## Incredible Views at Hyde Park Estates

- 4 Bedrooms
  - Baths: 4 Full, 2 Half
  - Main House 3125 Sq. Ft.
  - Guest House 563 Sq. Ft.
  - Studio 330 Sq. Ft.
  - 1.39 Acres
  - Built in 1983
  - 3 Fireplaces
- Frame, Stucco, Poured Pumice Construction \*
  - Flat, Pitched, Tar & Gravel Roof
  - Wood, Tile, Stone, Carpet Floors
  - Electric Cooking
  - Ductless (MiniSplit), Baseboard (Hot Water), Forced Air Heating
  - Ductless Cooling
- Septic
  - County Water
  - Internet: DSL, Satellite Dish, Wireless
  - Insulated Windows
  - Security System

*\*Buyer to Verify*

