

3174 La Avenida De San Marcos

3 Bedroom / 2 Bath / 2019 SF • \$439,000 • MLS# 202001510

DARLENE STREIT

SANTA FE REAL ESTATE PROPERTY

505.920.8001 • dstreit@dstreit.com

417 E. Palace Avenue • Santa Fe NM 87501

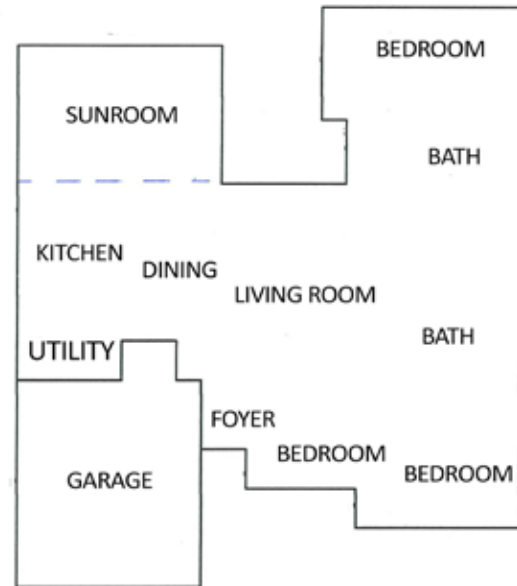
3174 La Avenida De San Marcos

3 Bedroom / 2 Bath / 2019 SF

\$439,000 • MLS# 202001510

3174 LA AVENIDA DE SAN MARCOS FLOOR PLAN

This depiction is for illustration purposes and may not be entirely accurate



3-bedroom 2 bath single level Pueblo style home in Southwest area of city overlooking an expansive greenbelt. Entry foyer leads into an open concept living, dining and kitchen. Light filled living room has a large picture window, wood floors, a corner kiva and recessed lighting. Remodeled kitchen with breakfast bar and decorative tiles. Kitchen and dining areas have access to the spacious sunroom. The large master bedroom has a sitting area, floor-to-ceiling windows and door to the

outside. Third bedroom offers flexible space as an office or studio. Highlighted features include mature landscaping, 2-car garage, front courtyard, back patio and deck with distant mountain views. Convenient location just .5 mile from the Genoveva Chavez Community Center, close to shopping and restaurants and only 15 minutes to the historic Santa Fe Plaza.



DARLENE STREIT

SANTA FE REAL ESTATE PROPERTY

505.920.8001 • dstreit@dstreit.com

417 E. Palace Avenue • Santa Fe NM 87501



LISTINGS

Scan this QR Code with your mobile phone's camera to view Darlene's and all listings online.

Or go to: SantaFeRealEstateProperty.com

To view additional photos of this property visit: SantaFeRealEstateProperty.com

Sotheby's International Realty and the Sotheby's International Realty logo are registered (or unregistered) service marks used with permission. Operated by Sotheby's International Realty, Inc. Real estate agents affiliated with Sotheby's International Realty, Inc. are independent contractor sales associates and are not employees of Sotheby's International Realty, Inc.

This material is based on information which we consider reliable, but because it has been supplied by third parties, we cannot represent that it is accurate or complete, and it should not be relied upon as such. This offering is subject to errors, omissions, change of price, or withdrawal without notice. EQUAL HOUSING OPPORTUNITY.

Sotheby's

INTERNATIONAL REALTY

326 Grant Ave, Santa Fe, NM 87501

505-988-2533





Single Level Pueblo Style Home in SW City Area

- 3 Bedrooms
- 2 Full Baths
- 2019 Sq. Ft.
- 0.161 Acres
- Built in 1979
- Frame, Stucco Construction *
- Flat, Tar & Gravel Roof
- 2 Garage Spaces
- 1 Fireplace
- Wood, Tile, Carpet Floors
- Gas Cooking
- Forced Air, Gas Heating
- Evaporative, Hall Cooling
- City Sewer
- City Water
- Internet: Cable
- HOA Fees: \$35 Per Year
- HOA Fees Cover: Greenbelt Access
- Insulated Windows
- Landscaped

**Buyer to Verify*

