

# 73 Condesa Rd

3 Bedroom / 4 Bath / 2492 SF • \$650,000 • MLS# 202001493

# DARLENE STREIT

SANTA FE REAL ESTATE PROPERTY

505.920.8001 • dstreit@dstreit.com

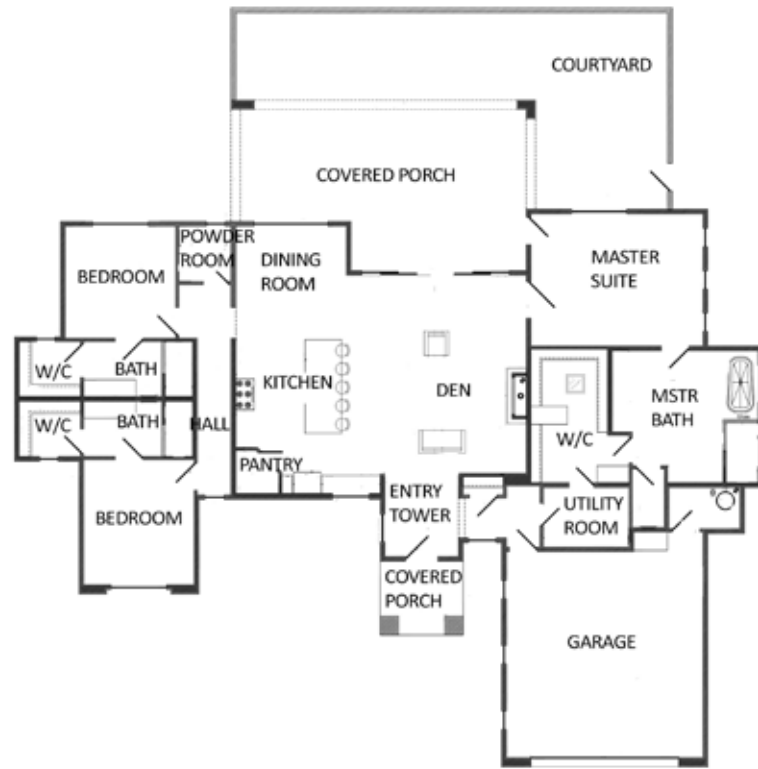
417 E. Palace Avenue • Santa Fe NM 87501

# 73 Condesa Rd

3 Bedroom / 4 Bath / 2492 SF

\$650,000 • MLS# 202001493

73 CONDESA RD - FLOOR PLAN  
This depiction is for illustration purposes and may not be entirely accurate



73 CONDESA RD - PLAT  
This depiction is for illustration purposes and may not be entirely accurate



Set on 1.74 acres in Eldorado, this new-under-construction contemporary Pueblo style 3-bedroom 3.5 bath home has stunning Sangre de Cristo and Jemez mountain views. 14 ft. entry tower leads to a dramatic open concept living, dining and kitchen area. The chef's kitchen has skylight, pantry with stack shelving and a large center island with double sink and seating for 4-6. Sliding glass doors open to a covered porch and courtyard for expanded living, dining and entertaining. Master suite has a spacious master bath with dual vanity sinks, skylights, linen closet and walk-in closet. Single level split bedroom floor plan

with master suite separated from 2 guest bedrooms with ensuite baths. Guest bedrooms offer flexible space to be used as an office or studio. Highlighted features include concrete and engineered wood flooring, forced heat and central air, attached 2-car garage, and NM Night Sky Protection Act compliant outdoor lighting. Eldorado is home to miles of walking trails, acres of wilderness, shopping, dining, library, Senior Center, summertime pool, and K-8 community school yet less than 20 minutes to the historic Santa Fe Plaza.



## DARLENE STREIT

SANTA FE REAL ESTATE PROPERTY

505.920.8001 • dstreit@dstreit.com

417 E. Palace Avenue • Santa Fe NM 87501



LISTINGS

Scan this QR Code with your mobile phone's camera to view Darlene's and all listings online.

Or go to:  
SantaFeRealEstateProperty.com

To view additional photos of this property visit: [SantaFeRealEstateProperty.com](http://SantaFeRealEstateProperty.com)

Sotheby's International Realty and the Sotheby's International Realty logo are registered (or unregistered) service marks used with permission. Operated by Sotheby's International Realty, Inc. Real estate agents affiliated with Sotheby's International Realty, Inc. are independent contractor sales associates and are not employees of Sotheby's International Realty, Inc.

This material is based on information which we consider reliable, but because it has been supplied by third parties, we cannot represent that it is accurate or complete, and it should not be relied upon as such. This offering is subject to errors, omissions, change of price, or withdrawal without notice. EQUAL HOUSING OPPORTUNITY.

## Sotheby's

INTERNATIONAL REALTY

326 Grant Ave, Santa Fe, NM 87501

505-988-2533







## Under Construction Home in Eldorado

- 3 Bedrooms
- Baths: 1 Full, 2 Three Quarter, 1 Half
- 2492 Sq. Ft.
- 1.74 Acres
- Under Construction
- Frame Construction \*
- Flat, Tar & Gravel Roof
- 2 Garage Spaces
- 1 Fireplace
- Wood (Engineered) Floors
- Forced Air Heating
- Central Cooling
- Septic
- Community Water
- Internet: Cable
- HOA Fees: \$550 Per Year
- HOA Fees Cover: Community Area Maintenance, Recreational Facilities

*\*Buyer to Verify*

