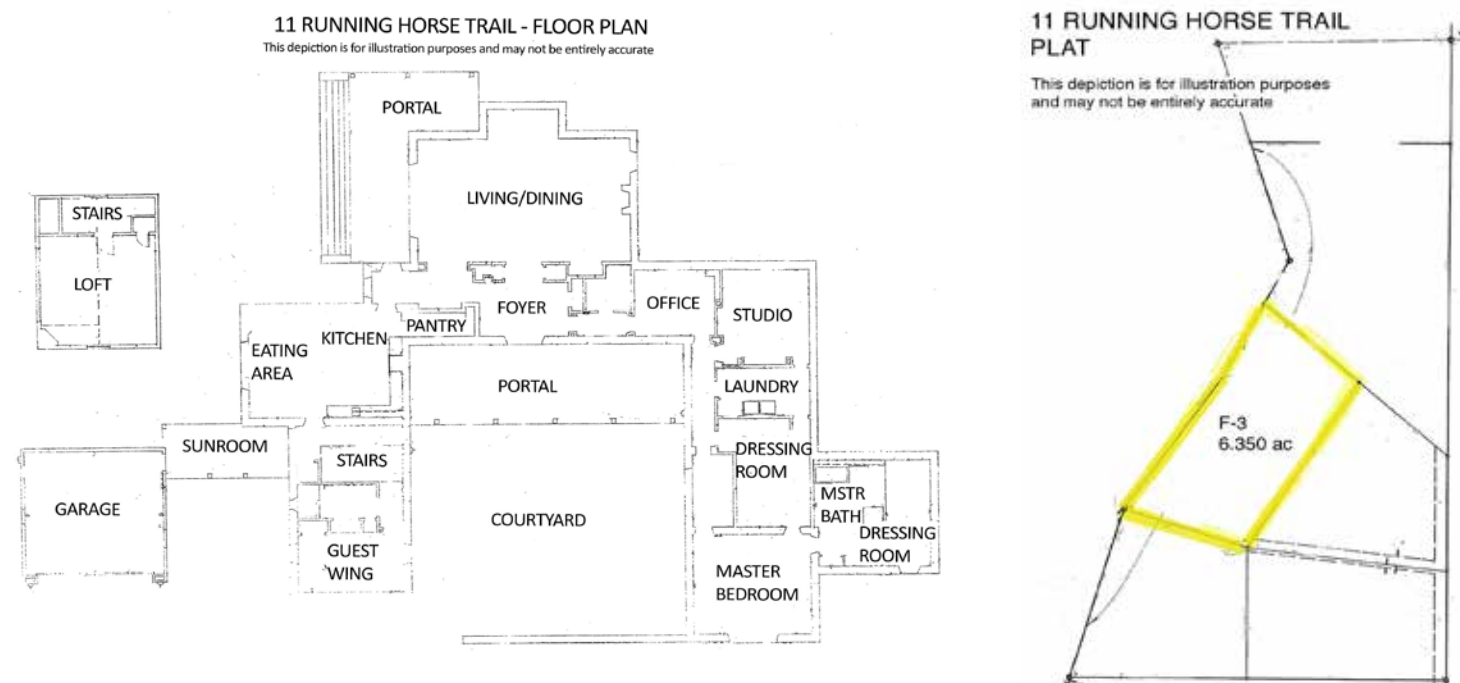


11 Running Horse Trail

3 Bedroom / 3 Bath / 5000 SF • \$1,125,000 • MLS# 202001323



DARLENE STREIT

SANTA FE REAL ESTATE PROPERTY

505.920.8001 • dstreit@dstreit.com

417 E. Palace Avenue • Santa Fe NM 87501

11 Running Horse Trail

3 Bedroom / 3 Bath / 5000 SF

\$1,125,000 • MLS# 202001323



Located on more than 6 acres with fruit trees and a fenced backyard, this beautiful 3 bedroom 3 bath home designed by Beverly Spears and built by Blue Raven Builders is a splendid retreat just minutes south of Santa Fe. Enter through the rustic wooden gate leading to the front porch, which provides ample shade for you to enjoy the lovely landscaped gardens in front of the home. Once inside, the living and dining areas flow together in the open floor plan, with polished concrete floors and a graceful vaulted ceiling. Step through French doors onto a covered outdoor deck in back with views of the surrounding hills and mountains on the horizon. The cook's kitchen, with a large walk-in pantry, has a gas stove and an eating area next to the corner fireplace. The master bedroom boasts

a kiva fireplace and French doors leading outside to a walled brick patio with wonderful views of the Sangre De Cristo foothills. The master bath contains both a jetted steeping tub and a large separate shower. The loft area above the downstairs guest bedroom is currently set up as a third bedroom. With dual heating and cooling units throughout, the home is comfortable and inviting. Additional features include a large walk in closet with laundry room nearby, an office and a cheerful sewing room both with built in shelving, and a sunroom/hot house that leads to the 2 car garage. Horses are allowed. Secluded yet close to town, experience this lovely custom designed gem for yourself.



DARLENE STREIT

SANTA FE REAL ESTATE PROPERTY

505.920.8001 • dstreit@dstreit.com

417 E. Palace Avenue • Santa Fe NM 87501



LISTINGS

Scan this QR Code with your mobile phone's camera to view Darlene's and all listings online.

Or go to:
SantaFeRealEstateProperty.com

To view additional photos of this property visit: SantaFeRealEstateProperty.com

Sotheby's International Realty and the Sotheby's International Realty logo are registered (or unregistered) service marks used with permission. Operated by Sotheby's International Realty, Inc. Real estate agents affiliated with Sotheby's International Realty, Inc. are independent contractor sales associates and are not employees of Sotheby's International Realty, Inc.

This material is based on information which we consider reliable, but because it has been supplied by third parties, we cannot represent that it is accurate or complete, and it should not be relied upon as such. This offering is subject to errors, omissions, change of price, or withdrawal without notice. EQUAL HOUSING OPPORTUNITY.

Sotheby's

INTERNATIONAL REALTY

326 Grant Ave, Santa Fe, NM 87501

505-988-2533





Beverly Spears Designed Home at Arroyo Hondo

- 3 Bedrooms
- Baths: 2 Full, 1 Three Quarter
- 5000 Sq. Ft.
- 6.35 Acres
- Built in 1994
- Pumicecrete Construction *
- Metal, Propanel, Pitched Roof
- 2 Garage Spaces
- 3 Fireplaces
- Wood, Concrete, Carpet Floors
- Gas Cooking
- Propane, Ductless (MiniSplit), Radiant In Floor Heating
- Ductless Cooling
- Septic
- Private Well
- Internet: Satellite Dish
- Insulated Windows
- Landscaped
- Security System
- Drip/Sprinkler System
- Water Purification
- Water Softener

**Buyer to Verify*

