

DARLENE STREIT

SANTA FE REAL ESTATE PROPERTY

505.920.8001 • dstreit@dstreit.com

417 E. Palace Avenue • Santa Fe NM 87501

10 La Traviata

2 Bedroom / 4 Bath / 3956 SF

\$1,150,000 • MLS# 202000840



Exquisitely detailed, this John Midyette designed 2 bedroom 4 bathroom partial adobe home is set on 3.26 acres in the Casas de San Juan gated community. Enter the courtyard through an ornate wrought iron gate. Design accents will catch your attention as you open the hand-carved wood double doors to a foyer with elegant tile floors and hand-painted coved ceiling. Pass through the wet bar into the grand living room with high ceilings, gorgeous wood beams and chandelier. The fireplace with decorative mantel is a dramatic centerpiece of the room and stunning mountain views from the windows and French doors add to the appeal. The spacious gourmet kitchen boasts custom wood cabinetry, utility room, center island, Saltillo tile floors and built-in appliances

with matching cabinet fronts. There's a formal dining room as well as several seating areas; some with kiva fireplace and access to the portals surrounding the home. The master suite has a separate seating area with kiva fireplace, generous walk-in closet and adjacent study. The spa-like master bath has jetted soaking tub, custom tile vanity and views of the distant mountains. Visitors can relax in the guest suite with a kitchenette, fireplace, ensuite bathroom with dual vanities and a separate entrance. Enjoy outdoor entertaining on the portals, with landscaping, a water feature and views for miles. Extra features are Talavera tiles, wood floors, custom lighting throughout. Just a short drive from Santa Fe plaza and the Opera.







Exquisitely Designed Home at Casas de San Juan

- 2 Bedrooms
- Baths: 2 Full, 2 Half
- 3956 Sq. Ft.
- 3.26 Acres
- Carport
- Built in 1989
- Adobe and possibly other materials, Frame, Stucco Construction *
- Flat Roof
- 6 Fireplaces
- Wood, Tile Floors
- Gas & Electric Cooking
- Electric, Radiant Heating
- Septic
- Shared Well
- Internet: Cable, DSL
- HOA Fees: \$1,749.00 per quarter
- HOA Fees Cover: Community Area & Road Maintenance, Security, Water
- Insulated Windows
- Security System
- Drip/Sprinkler System

**Buyer to Verify*

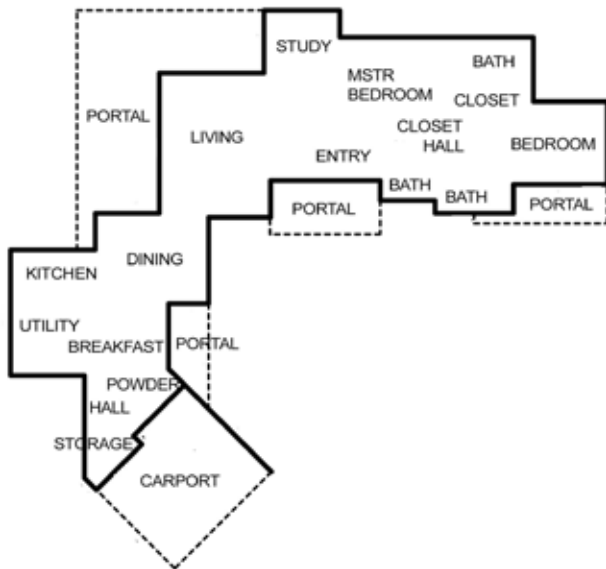


10 La Traviata

2 Bedroom / 4 Bath / 3956 SF ▪ \$1,150,000 ▪ MLS# 202000840

10 LA TRAVIATA - FLOOR PLAN

This depiction is for illustration purposes and may not be entirely accurate

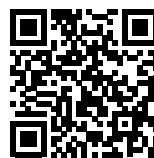


DARLENE STREIT

SANTA FE REAL ESTATE PROPERTY

505.920.8001 ▪ dstreit@dstreit.com

417 E. Palace Avenue ▪ Santa Fe NM 87501



LISTINGS

Scan this QR Code with your mobile phone's camera to view Darlene's and all listings online.

Or go to:
SantaFeRealEstateProperty.com

To view additional photos of this property visit: SantaFeRealEstateProperty.com

Sotheby's International Realty and the Sotheby's International Realty logo are registered (or unregistered) service marks used with permission. Operated by Sotheby's International Realty, Inc. Real estate agents affiliated with Sotheby's International Realty, Inc. are independent contractor sales associates and are not employees of Sotheby's International Realty, Inc.

This material is based on information which we consider reliable, but because it has been supplied by third parties, we cannot represent that it is accurate or complete, and it should not be relied upon as such. This offering is subject to errors, omissions, change of price, or withdrawal without notice. EQUAL HOUSING OPPORTUNITY.

Sotheby's

INTERNATIONAL REALTY

326 Grant Ave, Santa Fe, NM 87501
505-988-2533