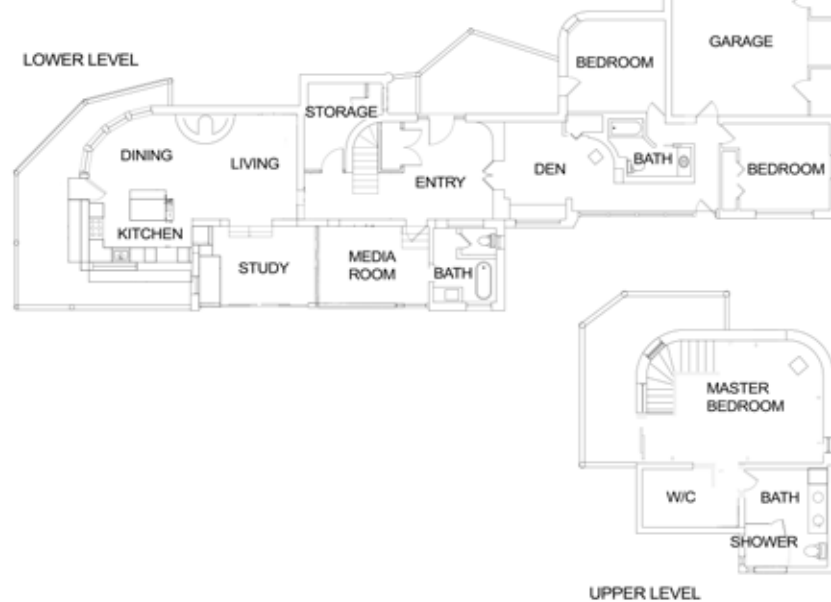


## 49 Zambra Way

3 Bedroom / 3 Bath / 3328 SF ▪ \$1,150,000 ▪ MLS# 202000713

49 ZAMBRA WAY - FLOOR PLAN

This depiction is for illustration purposes and may not be entirely accurate.



## DARLENE STREIT

SANTA FE REAL ESTATE PROPERTY

505.920.8001 ▪ dstreit@dstreit.com

417 E. Palace Avenue ▪ Santa Fe NM 87501

## 49 Zambra Way

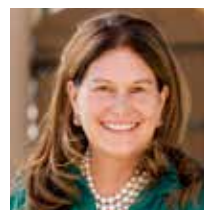
3 Bedroom / 3 Bath / 3328 SF

\$1,150,000 ▪ MLS# 202000713



Rare opportunity to own this special 3-bedroom, 3 bath pueblo-style home in Tesuque. Enjoy spectacular mountain views and unparalleled scenery. The home is on 5 acres with an additional 5-acre buildable lot included. Expansive contemporary kitchen and dining area is surrounded by large windows to capture views in multiple directions. A complete renovation in 2015 tastefully melds the original adobe style with a modern sensibility. The kitchen is light and white with elegant wood cabinetry and a honed-granite artisanal island. The master suite overlooks the Jemez mountain range and has a sitting area and walk-in closet with built-in dressers and shelving. The luxurious master bath has a custom-crafted dual vanity, heated tile, and a glass-walled shower

with views of the opera. Saltillo and hardwood flooring, niches, custom wrought iron railings and balusters, and vigas are throughout. Patios with pergola, outdoor kiva fireplace, masonry gas firepit and grill provide space for al fresco dining and entertaining. Separate meditation studio can double as a studio, library or office. Special features include wine cellar, media room with built-in 5:1 surround sound, built-in speakers inside/outside, irrigation system with mobile app, whole house water softener and 2 car garage. Superb location less than a mile from the Four Seasons Resort (spa/pool memberships available), minutes from El Nido and Tesuque Market and a short drive from both the Santa Fe Plaza and the Santa Fe Opera.



## DARLENE STREIT

SANTA FE REAL ESTATE PROPERTY

505.920.8001 ▪ dstreit@dstreit.com

417 E. Palace Avenue ▪ Santa Fe NM 87501



LISTINGS

Scan this QR Code with your mobile phone's camera to view Darlene's and all listings online.

Or go to:  
SantaFeRealEstateProperty.com

To view additional photos of this property visit: [SantaFeRealEstateProperty.com](http://SantaFeRealEstateProperty.com)

Sotheby's International Realty and the Sotheby's International Realty logo are registered (or unregistered) service marks used with permission. Operated by Sotheby's International Realty, Inc. Real estate agents affiliated with Sotheby's International Realty, Inc. are independent contractor sales associates and are not employees of Sotheby's International Realty, Inc.

This material is based on information which we consider reliable, but because it has been supplied by third parties, we cannot represent that it is accurate or complete, and it should not be relied upon as such. This offering is subject to errors, omissions, change of price, or withdrawal without notice. EQUAL HOUSING OPPORTUNITY.

## Sotheby's

INTERNATIONAL REALTY

326 Grant Ave, Santa Fe, NM 87501  
505-988-2533







## Pueblo Style Home w/ Mountain Views in Tesuque

- 3 Bedrooms
- Baths: 2 Full, 1 Three Quarter
- Main House 3216 Sq. Ft.
- Studio 112 Sq. Ft.
- 10.00 Acres - Two 5 Acre Parcels
- Built in 1980
- Adobe and possibly other materials, Frame, Stucco Construction \*
- Flat, Membrane Roof
- 2 Garage Spaces
- 2 Fireplaces Plus Wood Stove
- Wood, Tile Floors
- Gas & Electric Cooking
- Baseboard (Electric), Ductless (Mini-Split) Heating
- Refrigerator Ductless Cooling
- Septic
- Shared Well (.75 acre-feet per parcel)
- Internet: DSL, Satellite, Wireless (Point to Point)
- Insulated Windows
- Drip/Sprinkler System
- Water Purification (under sink)
- Water Softener (whole house)
- Wine Cellar
- Passive Solar Design
- Xeriscaping
- Recirc Pump for Hot Water

*\*Buyer to Verify*

