

DARLENE STREIT

SANTA FE REAL ESTATE PROPERTY

505.920.8001 • dstreit@dstreit.com

417 E. Palace Avenue • Santa Fe NM 87501

43 Via Pampa

3 Bedroom • 3 1/2 Bath • 2656 SF

\$950,000 • MLS# 202000680



This 3-bedroom 3.5 bath soft contemporary style home by Boss Builders, is in the Park Estates enclave of Las Campanas and has dramatic views of both the Jemez and Sangre de Cristo mountains. The epicurean kitchen joins the formal dining and living areas in an open and inviting floor plan which is perfect for entertaining. The kitchen offers a classic side-by-side refrigerator/freezer, a 6-burner gas range, a built-in microwave drawer, a large walk-in pantry and a center island with seating for 4-6 persons. The master suite's spacious bedroom has access to a back portal and its bath has a dual walk-in

closet, dual sinks, Caesar stone countertops, skylight, glass wall shower and a Paris acrylic freestanding tub. The split floor plan with the 2 guest bedrooms with 2 baths provides maximum privacy for guests and flexibility for one bedroom to be an office or studio. Distinctive finishes throughout. Sited on more than an acre, this home boasts multiple portals to capture the mountain vistas and an outdoor fireplace. Gated Las Campanas community is conveniently located at the base of the Sangre de Cristo mountains.







Dramatic Mountain Views in Park Estates

- 3 Bedrooms
- Baths: 2 Full, 1 Three Quarter, 1 Half
- 2656 Sq. Ft.
- 1.098 Acres
- Built in 2020
- Frame, Stucco Construction *
- Flat, Membrane Roof
- 3 Garage Spaces
- 2 Fireplaces
- Gas Cooking
- Radiant In Floor Heating
- Refrigerator, Central Cooling
- Community Sewer
- Community Water
- Internet: Cable, DSL, Satellite Dish
- HOA Fees: 2020, \$827.50 Per Qtr
- HOA Fees Cover:
 - Community Area & Road Maintenance, Security
- Insulated Windows
- Drip/Sprinkler System
- EnergyStar Appliances
- Tankless Hot Water
- Low Flow Fixtures
- Recirc Pump for Hot Water

**Buyer to Verify*

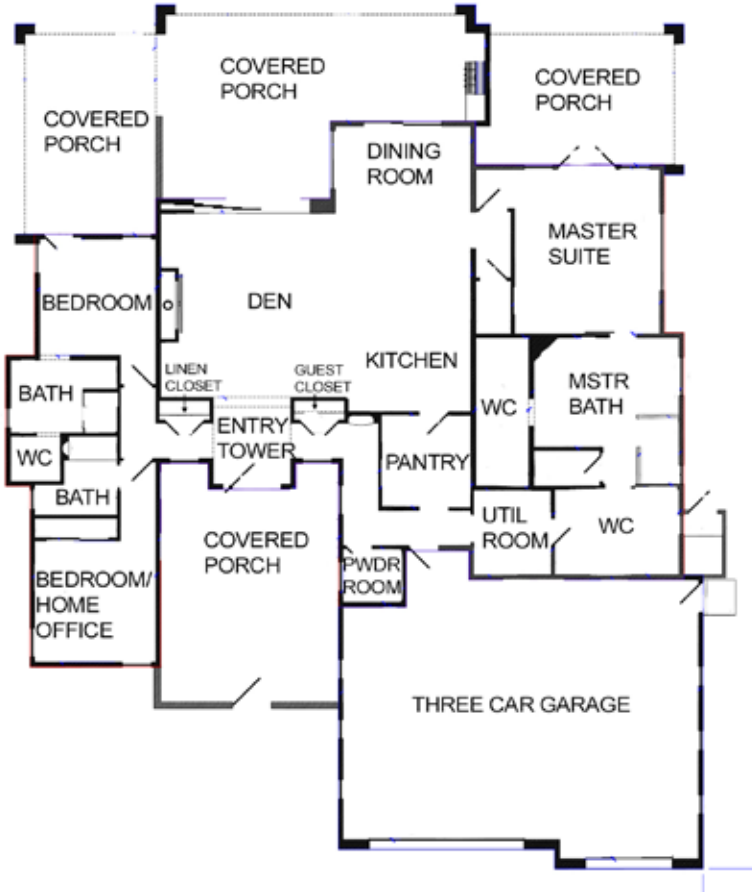


43 Via Pampa

3 Bedroom • 3 1/2 Bath • 2656 SF • \$950,000 • MLS# 202000680

43 VIA PAMPA - FLOOR PLAN

This depiction is for illustration purposes and may not be entirely accurate



43 VIA PAMPA - PLAT

This depiction is for illustration purposes and may not be entirely accurate



DARLENE STREIT

SANTA FE REAL ESTATE PROPERTY

505.920.8001 • dstreit@dstreit.com

417 E. Palace Avenue • Santa Fe NM 87501



LISTINGS

Scan this QR Code with your mobile phone's camera to view Darlene's and all listings online.

Or go to:
SantaFeRealEstateProperty.com

To view additional photos of this property visit: SantaFeRealEstateProperty.com

Sotheby's International Realty and the Sotheby's International Realty logo are registered (or unregistered) service marks used with permission. Operated by Sotheby's International Realty, Inc. Real estate agents affiliated with Sotheby's International Realty, Inc. are independent contractor sales associates and are not employees of Sotheby's International Realty, Inc.

This material is based on information which we consider reliable, but because it has been supplied by third parties, we cannot represent that it is accurate or complete, and it should not be relied upon as such. This offering is subject to errors, omissions, change of price, or withdrawal without notice. EQUAL HOUSING OPPORTUNITY.

Sotheby's

INTERNATIONAL REALTY

326 Grant Ave, Santa Fe, NM 87501
505-988-2533