

501 Johnson Lane

2 Bedroom / 2 Bath / 1100 SF • \$725,000 • MLS# 202000485

DARLENE STREIT

SANTA FE REAL ESTATE PROPERTY

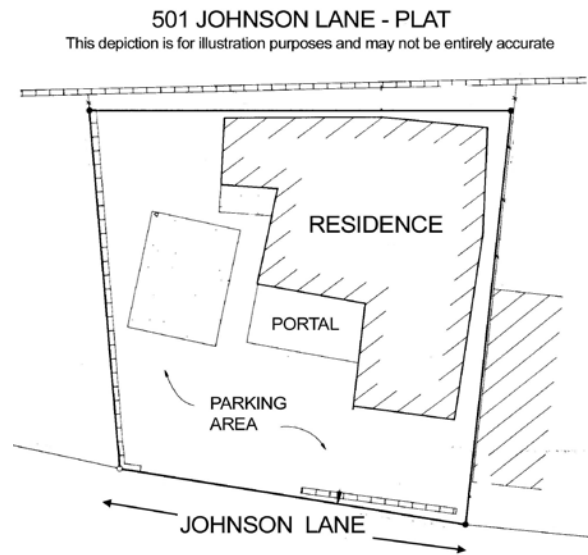
505.920.8001 • dstreit@dstreit.com

417 E. Palace Avenue • Santa Fe NM 87501

501 Johnson Lane

2 Bedroom / 2 Bath / 1100 SF

\$725,000 • MLS# 202000485



This lovely Santa Fe-style 2-bedroom 2 bath home with unique rustic accents throughout, sits on a hidden lane in the heart of the Historic Eastside. Enter the enclosed courtyard and into the warm and inviting living room with a beamed ceiling, stone-accented wall with built-in bookcase, and French doors that open to an outdoor patio. The bright, well-lit kitchen has granite countertops, a Subzero refrigerator, a well-appointed range/oven, a microwave, an eat-in area and access to a 6x10 downstairs storage room. Wood floors and a wood-burning fireplace add to the pleasant ambiance of the master bedroom. The additional bedroom and

bath provide a flexible place for guests and a studio or office. A separate laundry area includes a stackable washer/dryer. There is plenty of outdoor space with a wrap-around flagstone patio including a hot tub, kiva plus additional space for al fresco dining and entertaining. Special features include four fireplaces, antique doors, insulated windows, security system, and landscaping. Perfect for a rental property, pied a terre or downsizing. Don't pass up this opportunity to own a home in an excellent location, just blocks from Downtown Subscription and Canyon Road.



DARLENE STREIT

SANTA FE REAL ESTATE PROPERTY

505.920.8001 • dstreit@dstreit.com

417 E. Palace Avenue • Santa Fe NM 87501



LISTINGS

Scan this QR Code with your mobile phone's camera to view Darlene's and all listings online.

Or go to: SantaFeRealEstateProperty.com

To view additional photos of this property visit: SantaFeRealEstateProperty.com

Sotheby's International Realty and the Sotheby's International Realty logo are registered (or unregistered) service marks used with permission. Operated by Sotheby's International Realty, Inc. Real estate agents affiliated with Sotheby's International Realty, Inc. are independent contractor sales associates and are not employees of Sotheby's International Realty, Inc.

This material is based on information which we consider reliable, but because it has been supplied by third parties, we cannot represent that it is accurate or complete, and it should not be relied upon as such. This offering is subject to errors, omissions, change of price, or withdrawal without notice. EQUAL HOUSING OPPORTUNITY.

Sotheby's

INTERNATIONAL REALTY

326 Grant Ave, Santa Fe, NM 87501

505-988-2533





Santa Fe Style Home in the Heart of Historic Eastside

- 2 Bedrooms
- Baths: 1 Full, 1 Three Quarter
- 1100 Sq. Ft.
- 0.07 Acres
- Adobe and possibly other materials, Block, Pumice Poured Construction *
- Flat, Membrane Roof
- 2 Off Street Parking Spaces
- 4 Fireplaces
- Wood, Brick Floors
- Gas Cooking
- Radiant In Floor Heating
- Evaporative Cooling
- City Sewer
- City Water
- Internet: Cable, DSL
- Hot Tub
- Insulated Windows
- Landscaped
- Security System

**Buyer to Verify*

