

# 64 Lodge Trail

3 Bedroom / 3 Bath / 3310 SF • \$1,445,000 • MLS# 202000183

# DARLENE STREIT

SANTA FE REAL ESTATE PROPERTY

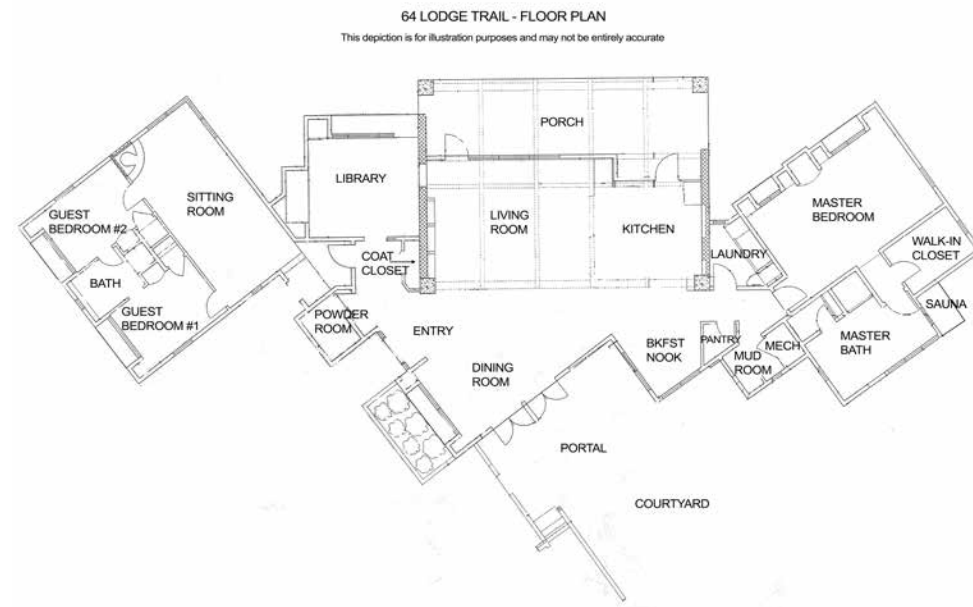
505.920.8001 • dstreit@dstreit.com

417 E. Palace Avenue • Santa Fe NM 87501

# 64 Lodge Trail

3 Bedroom / 3 Bath / 3310 SF

\$1,445,000 • MLS# 202000183



This 3-bedroom 2.5 bath contemporary home located in the gated Bishop's Lodge Hills has expansive mountain views. High-quality construction enhances the design which features open living spaces and excellent separation of the master suite from the 2 guest bedrooms. A dramatic fireplace creates a stylish focal point amidst soaring ceilings with light wood beams and high transom windows. Spacious and grand, the gourmet kitchen was designed for entertaining with stainless-steel appliances, Sub-Zero refrigerator, island with sink and seating, Caesarstone countertops, a breakfast area plus plenty of storage. There is a separate library/office adjacent to the living area. The luxurious master suite has a gas fireplace, beautiful wood floors and ceilings,

spacious closet, soaking tub, large walk-in shower, and sauna. A separate large library/media area frames the 2 guest bedrooms with a Jack and Jill bathroom. Plentiful patios and outdoor entertaining spaces to the East, West, and South allow for quiet intimacy or welcoming large crowds. Bishops Lodge Hills offers various amenities including 2 seasonal outdoor pools and hiking trail access into Carson National Forest. The neighboring historic Bishop's Lodge Resort is currently being remodeled to re-open in 2020. All of this, minutes to the Plaza, the Opera, and Ten Thousand Waves in one of Santa Fe's premier residential communities with commanding, top of the world views to the west and northwest.



## DARLENE STREIT

SANTA FE REAL ESTATE PROPERTY

505.920.8001 • dstreit@dstreit.com

417 E. Palace Avenue • Santa Fe NM 87501



LISTINGS

Scan these QR Codes to view Darlene's listings online or to download our mobile app.

OR text DSTREIT to 87778, or go to: [m.sir.com/dstreit](http://m.sir.com/dstreit)



APP

To view additional photos of this property visit: [SantaFeRealEstateProperty.com](http://SantaFeRealEstateProperty.com)

Sotheby's International Realty and the Sotheby's International Realty logo are registered (or unregistered) service marks used with permission. Operated by Sotheby's International Realty, Inc. Real estate agents affiliated with Sotheby's International Realty, Inc. are independent contractor sales associates and are not employees of Sotheby's International Realty, Inc.

This material is based on information which we consider reliable, but because it has been supplied by third parties, we cannot represent that it is accurate or complete, and it should not be relied upon as such. This offering is subject to errors, omissions, change of price, or withdrawal without notice. EQUAL HOUSING OPPORTUNITY.

## Sotheby's

INTERNATIONAL REALTY

326 Grant Ave, Santa Fe, NM 87501

505-988-2533





## Contemporary Home w/ Views at Bishop's Lodge Hills

- 3 Bedrooms
- Baths: 1 Full, 1 Three Quarter, 1 Half
- 3310 Sq. Ft.
- 1.10 Acres
- Built in 2007
- Frame, Stucco Construction \*
- Flat, Metal Propanel, Pitched Roof
- 2 Garage Spaces
- 3 Fireplaces
- Wood, Concrete Floors
- Gas Cooking
- Gas, Ductless (Mini Split) , Radiant In
- Floor Heating
- Ductless Cooling
- Community Sewer
- Community Water
- Internet: Cable, DSL, Satellite
- HOA Fees: \$811.00 Per Quarter
- HOA Fees Cover: Community Area & Road Maintenance, Recreational Facilities, Security, Water
- Insulated Windows
- Xeriscaped
- Drip/Sprinkler System
- Security System
- Water Purification
- Water Softener
- Passive Solar Design
- Solar Photovoltaic PNM Renewable Energy Credit
- Greywater System
- Rainwater Harvesting

*\*Buyer to Verify*

