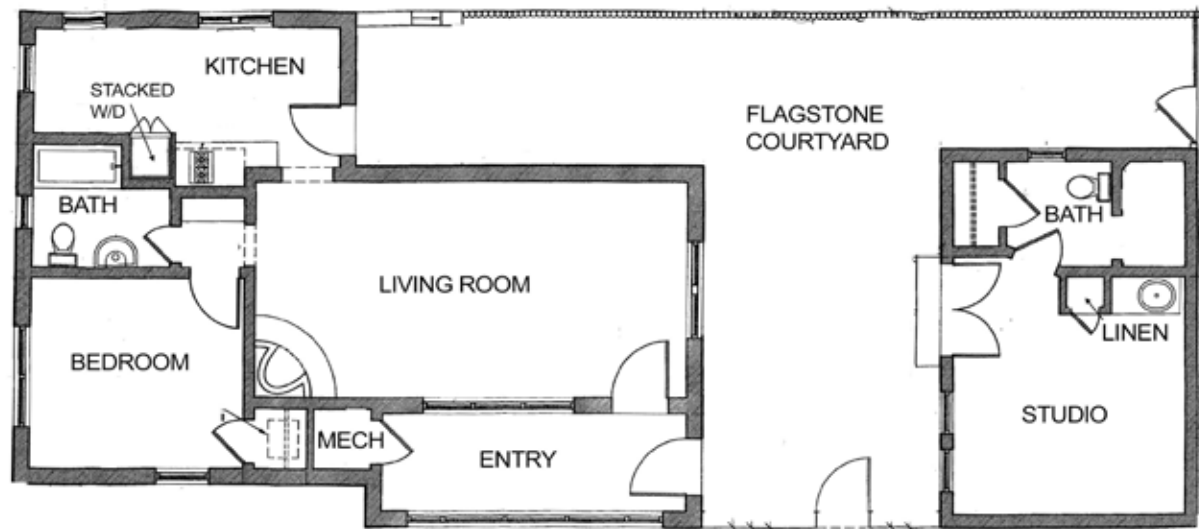


509 Plaza Balentine

2 Bedroom / 2 Bath / 1093 SF • \$695,000 • MLS# 201905438

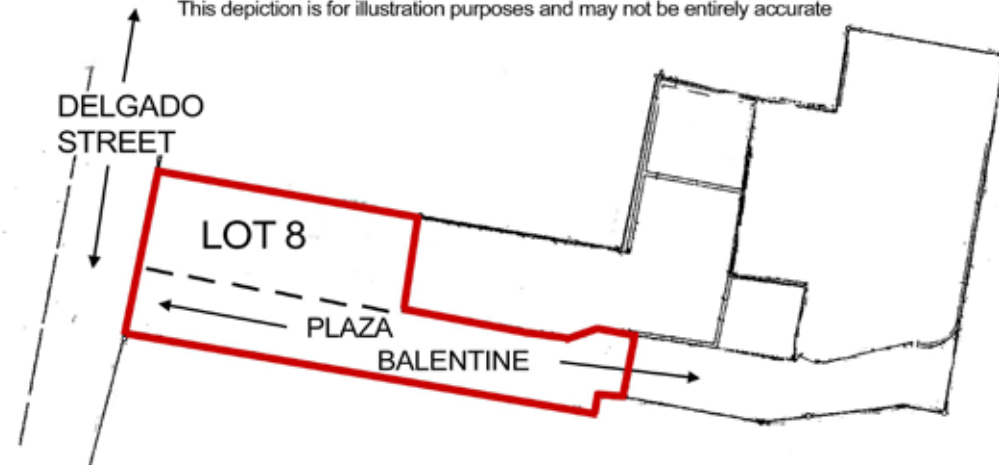
509 PLAZA BALENTINE - FLOOR PLAN

This depiction is for illustration purposes and may not be entirely accurate



509 PLAZA BALENTINE - PLAT

This depiction is for illustration purposes and may not be entirely accurate



DARLENE STREIT

SANTA FE REAL ESTATE PROPERTY

505.920.8001 • dstreit@dstreit.com

417 E. Palace Avenue • Santa Fe NM 87501

509 Plaza Balentine

2 Bedroom / 2 Bath / 1093 SF

\$695,000 • MLS# 201905438



Located just a few blocks off Canyon Road on the sought-after Historic Eastside and renovated in 2019, this 1 bedroom and 1 bath home has a detached studio with 1 bathroom that is ideal for your creative pursuits or as a place to offer guests a private retreat. Enter through the gate where you can enjoy the peace and quiet of your flagstone courtyard. The bright and airy living room has space to entertain around the kiva fireplace or step out onto the heated porch/sunroom for additional entertaining space. The kitchen features custom wood cabinetry, granite and wood countertops, gas cook top and a separate built-in oven. Master bedroom offers plenty of space to relax and unwind.

And the master bathroom has a pedestal sink, subway tile accents, and tiled tub and shower combo. The home also features hardwood floors, and viga and wood ceilings throughout. The detached guest suite/studio offers plenty of well-lit space, antique wood vanity and Talavera sink in the main room, separate bathroom with tiled walk-in shower, Saltillo tiled floors, and viga and wood ceilings. Recent updates include fresh paint, refinished floors, chimney repaired and swept, updated lighting, and exterior landscaping. New and additional baseboard heat in main house in September of 2019. A perfect pied a terre or rental property less than 1 mile from historic Santa Fe Plaza.



DARLENE STREIT

SANTA FE REAL ESTATE PROPERTY

505.920.8001 • dstreit@dstreit.com

417 E. Palace Avenue • Santa Fe NM 87501



LISTINGS

Scan these QR Codes to view Darlene's listings online or to download our mobile app.

OR text DSTREIT to 87778, or go to: m.sir.com/dstreit



APP

To view additional photos of this property visit: SantaFeRealEstateProperty.com

Sotheby's International Realty and the Sotheby's International Realty logo are registered (or unregistered) service marks used with permission. Operated by Sotheby's International Realty, Inc. Real estate agents affiliated with Sotheby's International Realty, Inc. are independent contractor sales associates and are not employees of Sotheby's International Realty, Inc.

This material is based on information which we consider reliable, but because it has been supplied by third parties, we cannot represent that it is accurate or complete, and it should not be relied upon as such. This offering is subject to errors, omissions, change of price, or withdrawal without notice. EQUAL HOUSING OPPORTUNITY.

Sotheby's

INTERNATIONAL REALTY

326 Grant Ave, Santa Fe, NM 87501

505-988-2533





Home & Detached Studio on Historic Eastside

- 2 Bedrooms
- Baths: 1 Full, 1 Three Quarter
- Main House 810 Sq. Ft.
- Studio 283 Sq. Ft.
- 0.111 Acre
- Block, Frame, Stucco Construction*
- Flat, Tar & Gravel Roof
- 1 Off Street Parking Space
- 1 Fireplace
- Wood, Brick, Tile Floors
- Gas Cooking
- Heating:
 - Hot Water Baseboard in House
 - Electric Baseboard in Studio
- Cooling: Room Unit
- City Sewer
- City Water
- Internet: Cable, DSL, Wireless
- HOA Fees: No Monthly Fees. Road Maintenance As Needed
- Security System
- Landscaped
- Drip/Sprinkler System
- Tankless Hot Water in Studio

**Buyer to Verify*

