

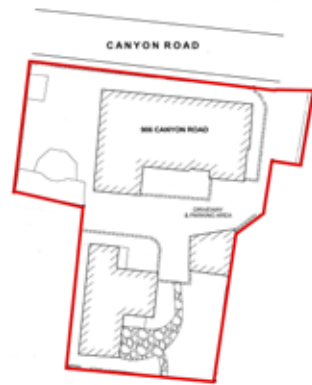
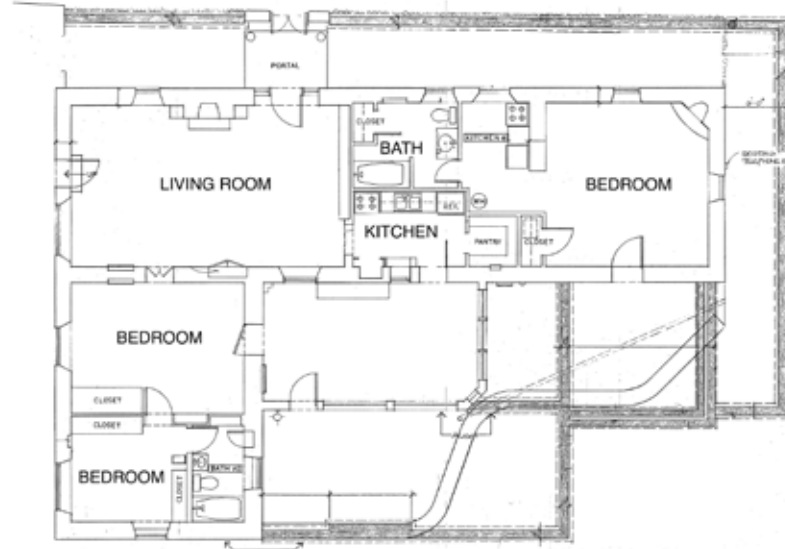
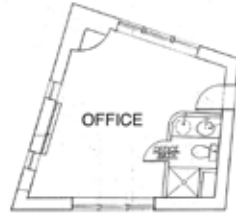
DETAILS

- 4 Bedrooms
- Baths: 2 Full, 2 Three Quarter, 1 Half
- Main House 2362 SF
- Guest House 1024 SF
- Studio 314 SF
- 0.25 Acre
- Built in 1955
- Wood, Brick Floors

- Flat Roof
- Adobe and possibly other materials, Block, Brick, Frame, Stucco, Rock Construction *
- 6 Fireplaces
- Gas Cooking
- City Sewer
- City Water
- Internet: Cable, DSL, Satellite

- Active Solar, Hot Water Baseboard, Ductless (MiniSplit), Electric, Forced Air, Heating
- Landscaped
- Security System
- Drip/Sprinkler System
- Solar Photovoltaic (Electric)

**Buyer to Verify*

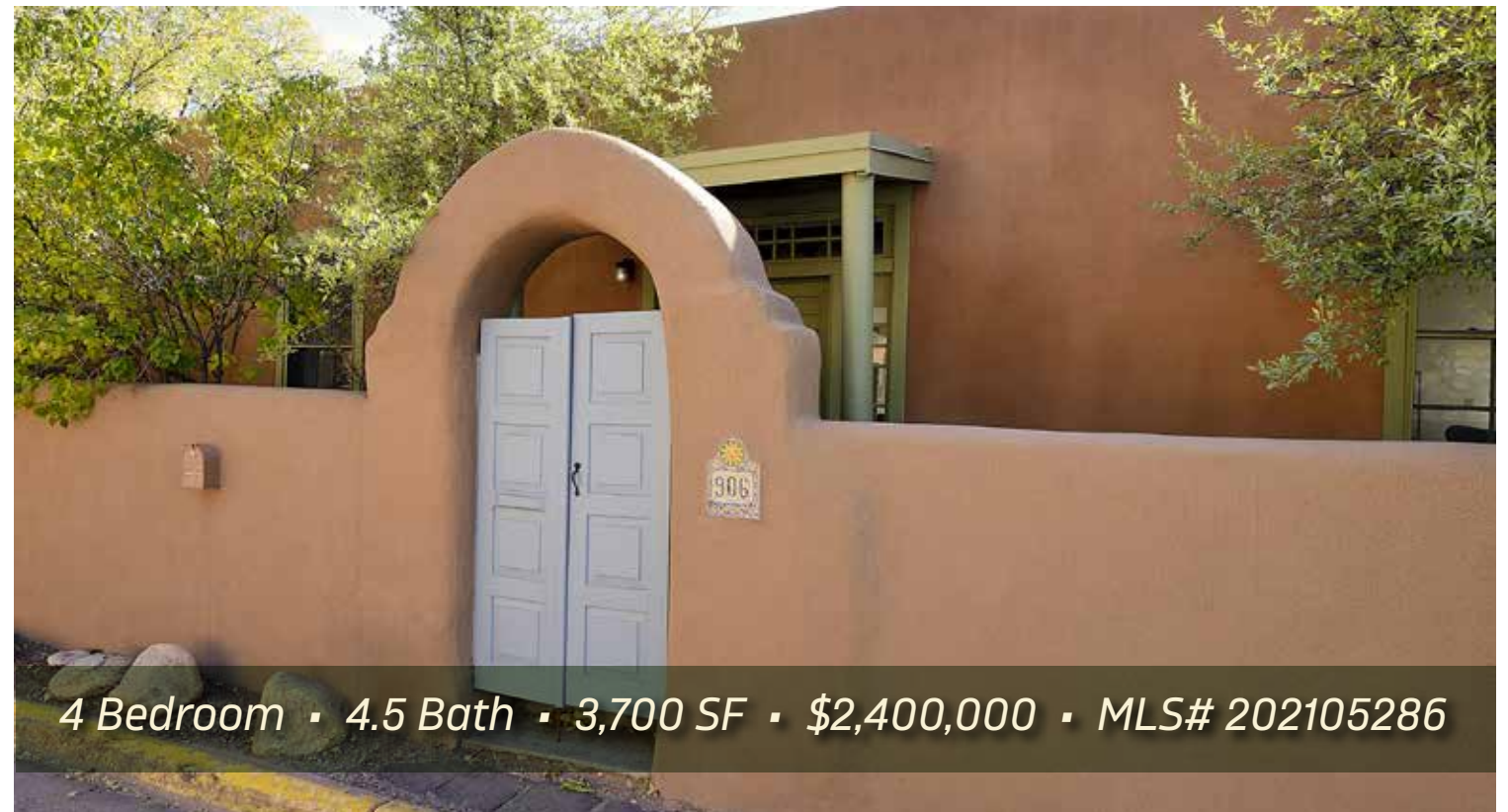


Floor plan is for illustration purposes and may not be entirely accurate.

Plat depiction is for illustration purposes and may not be entirely accurate.



906 CANYON RD



4 Bedroom • 4.5 Bath • 3,700 SF • \$2,400,000 • MLS# 202105286

DARLENE STREIT

SANTA FE REAL ESTATE PROPERTY



DARLENE STREIT

505.920.8001 • dstreit@dstreit.com

Office: 417 E. Palace Avenue

Santa Fe NM 87501

SantaFeRealEstateProperty.com

DarleneStreit.com

SantaFeLuxuryHomesandLand.com



View Listing Online

© Sotheby's International Realty, Inc. All rights reserved. Sotheby's International Realty® is a registered trademark. This material is based upon information which we consider reliable but because it has been supplied by third parties, we cannot represent that it is accurate or complete and it should not be relied upon as such. This offering is subject to errors, omissions, changes including price or withdrawal without notice. If your property is listed with a real estate broker, please disregard. It is not our intention to solicit the offerings of other real estate brokers. We are happy to work with them and cooperate fully. Operated by Sotheby's International Realty, Inc. Real estate agents affiliated with Sotheby's International Realty, Inc. are independent contractor sales associates and are not employees of Sotheby's International Realty, Inc. Equal Housing Opportunity. Sotheby's International Realty, 326 Grant Ave, Santa Fe, NM 87501, 505-988-2533.

Sotheby's
INTERNATIONAL REALTY

906 CANYON RD

4 Bedroom • 4.5 Bath • 3,700 SF • \$2,400,000 • MLS# 202105286

A rare opportunity to own this adobe 4 bedroom 5 bath compound in the midst of the Canyon Road. Experience fine art, great shopping and world class dining any day of the week. Comprised of three separate structures, this compound affords space for multiple living options or gallery/studio space. Entering the main house, you will encounter a generous living/dining area with brick floors, high beamed ceilings and a sizable kiva. The well-appointed kitchen has a Wolf range, a Bosch dishwasher and a Sub-zero refrigerator. There are two bedrooms and three baths in the main house. Stay snug in the winter in the master suite with kiva. In addition, there is a wall of built-in closets and drawers so plenty of storage. The guesthouse offers privacy and comfort for visitors with a bedroom, bath, kitchen and living/studio area, washer/dryer plus its own walled garden and old growth trees. The original well house has been cleverly adapted into a charming casita. Extensive repairs and remodeling were done by previous owners in 2018 including new Brai roof on both main/guest house and outbuilding, skylights, updated baths, solar panels on main/guest house and new stucco all done per historic preservation guidelines. Off street parking and storage out buildings complete this exclusive property. Zoned for residential/commercial use.

DARLENE STREIT | 505.920.8001 | DSTREIT@DSTREIT.COM



LIVING | DINING | GUESTHOUSE

↳ Versatile Living Options ↳ Wolf Range, Sub-Zero Refrigerator ↳ Guest House & Casita



BEDROOMS | BATHROOMS

↳ 4 Bedrooms ↳ 5 Baths ↳ Baths Updated in 2018

