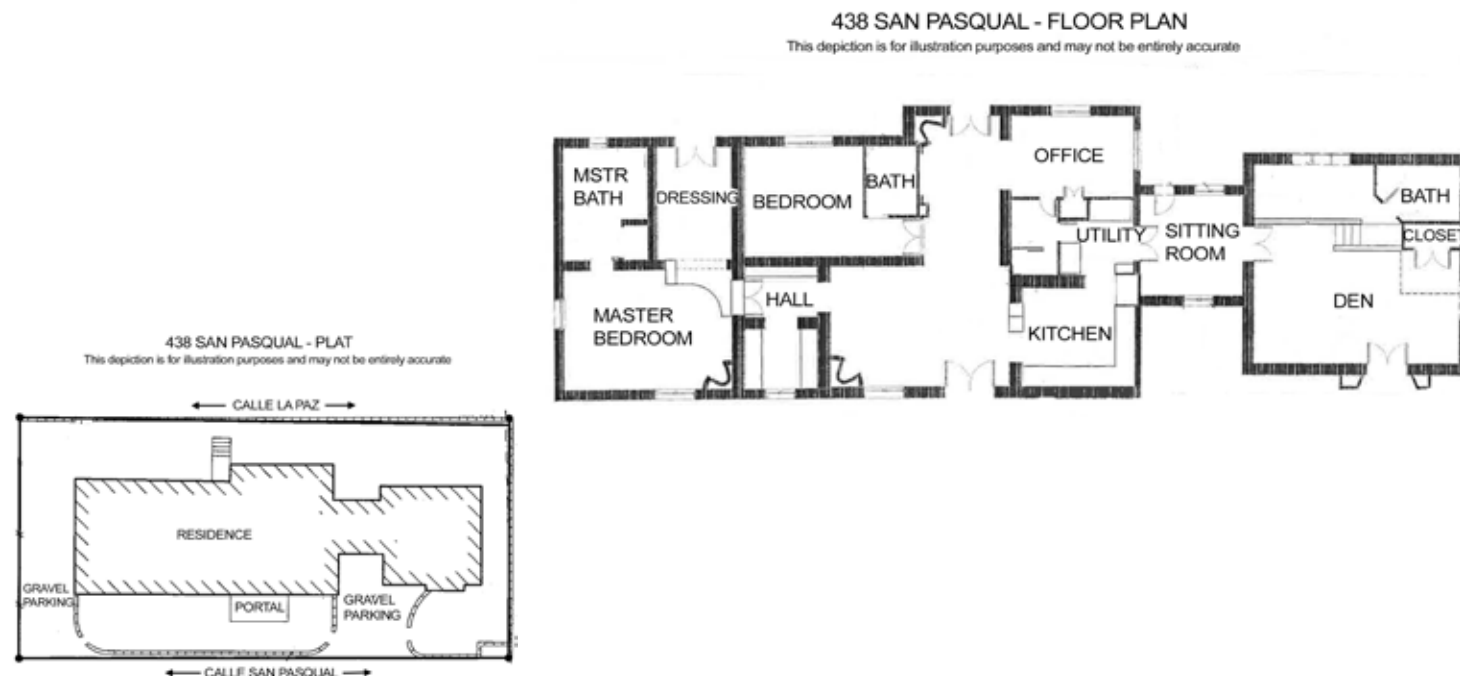


438 San Pasqual

3 Bedroom / 4 Bath / 2243 SF ▪ \$950,000 ▪ MLS# 201905084



DARLENE STREIT

SANTA FE REAL ESTATE PROPERTY

505.920.8001 ▪ dstreit@dstreit.com
417 E. Palace Avenue ▪ Santa Fe NM 87501



LISTINGS

Scan these QR Codes to view
Darlene's listings online or to
download our mobile app.

OR text DSTREIT to 87778,
or go to: m.sir.com/dstreit



APP

To view additional photos of this property visit: SantaFeRealEstateProperty.com

Sotheby's International Realty and the Sotheby's International Realty logo are registered (or unregistered) service marks used with permission. Operated by Sotheby's International Realty, Inc. Real estate agents affiliated with Sotheby's International Realty, Inc. are independent contractor sales associates and are not employees of Sotheby's International Realty, Inc.

This material is based on information which we consider reliable, but because it has been supplied by third parties, we cannot represent that it is accurate or complete, and it should not be relied upon as such. This offering is subject to errors, omissions, change of price, or withdrawal without notice. EQUAL HOUSING OPPORTUNITY.

Sotheby's
INTERNATIONAL REALTY

326 Grant Ave, Santa Fe, NM 87501
505-988-2533

DARLENE STREIT

SANTA FE REAL ESTATE PROPERTY

505.920.8001 ▪ dstreit@dstreit.com
417 E. Palace Avenue ▪ Santa Fe NM 87501

438 San Pasqual

3 Bedroom / 4 Bath / 2243 SF
\$950,000 ▪ MLS# 201905084



Great opportunity to own a piece of the Historic Eastside with this charming 2 bedroom home with open office and 3 full baths and a 1-bedroom casita with bathroom. Enter the flagstone-lined courtyard and enjoy relaxing and listening to sounds of the water feature. Warm and inviting, the charming living room offers space to relax around the Kiva fireplace. Entertaining is a breeze with open flow and sight lines between the living room, dining room, and kitchen. Enjoy dinner by firelight from the Kiva fireplace in the dining room. Gourmet kitchen features custom wood cabinetry, Talavera tile countertops, stainless steel appliances (including Dacor Gas range, and Sub-Zero refrigerator), and a cozy eat-in dining area. Retreat to the master bedroom with Kiva fireplace,

custom wood wardrobes in the walk-in closet and in the hallway that leads to private access to the courtyard. The relaxing ambiance continues into the master bathroom with custom wood dual vanity, Talavera tile countertop, soaking tub, and tiled walk-in shower. Your guests can stay in an additional bedroom and bathroom. For a little extra privacy, the attached guest house offers plenty of room with a full kitchen and bathroom with soaking tub, and Kiva fireplace. Other features are coved viga ceilings, brick, wood, Saltillo, and flagstone flooring, and stucco privacy walls. Located 1 mile from the Santa Fe Plaza and 4 blocks from the famed Canyon road, this home is a lovely pied a terre or rental opportunity.





Own a Piece of the Historic Eastside

- 3 Bedrooms
- Baths: 3 Full, 1 Three Quarter
- 2243 Sq. Ft.
- 0.138 Acres
- Adobe and possibly other materials, Stucco, Construction *
- Flat, Tar & Gravel Roof
- 4 Fireplaces
- Brick, Tile, Wood Floors
- Baseboard Hot Water Heating
- Ductless Cooling
- City Sewer
- City Water
- Internet: Cable, DSL
- Insulated Windows
- Landscaped
- Security System

**Buyer to Verify*

