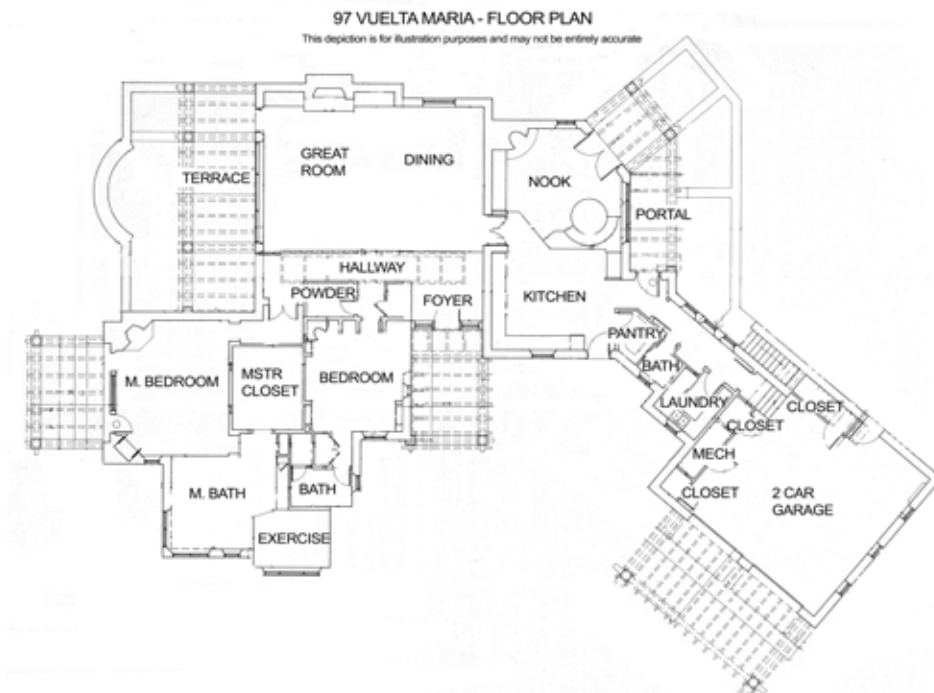
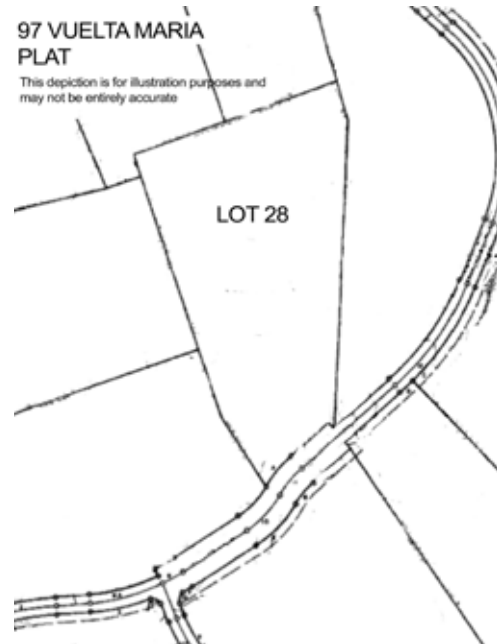


97 Vuelta Maria

2 Bedroom / 4 Bath / 3116 SF ▪ \$1,050,000 ▪ MLS# 201904532



DARLENE STREIT

SANTA FE REAL ESTATE PROPERTY

505.920.8001 ▪ dstreit@dstreit.com
417 E. Palace Avenue ▪ Santa Fe NM 87501



LISTINGS

Scan these QR Codes to view
Darlene's listings online or to
download our mobile app.

OR text DSTREIT to 87778,
or go to: m.sir.com/dstreit



APP

To view additional photos of this property visit: SantaFeRealEstateProperty.com

Sotheby's International Realty and the Sotheby's International Realty logo are registered (or unregistered) service marks used with permission. Operated by Sotheby's International Realty, Inc. Real estate agents affiliated with Sotheby's International Realty, Inc. are independent contractor sales associates and are not employees of Sotheby's International Realty, Inc.

This material is based on information which we consider reliable, but because it has been supplied by third parties, we cannot represent that it is accurate or complete, and it should not be relied upon as such. This offering is subject to errors, omissions, change of price, or withdrawal without notice. EQUAL HOUSING OPPORTUNITY.

Sotheby's
INTERNATIONAL REALTY

326 Grant Ave, Santa Fe, NM 87501
505-988-2533

DARLENE STREIT

SANTA FE REAL ESTATE PROPERTY

505.920.8001 ▪ dstreit@dstreit.com
417 E. Palace Avenue ▪ Santa Fe NM 87501

97 Vuelta Maria

2 Bedroom / 4 Bath / 3116 SF
\$1,050,000 ▪ MLS# 201904532



Outstanding 2 bedroom 4 bath contemporary pueblo style home sited on 10 plus acres in the picturesque community of Las Dos. Enter this idyllic home through the wonderfully landscaped courtyard. The appreciation for nature continues into the spacious formal living and dining room with the large picture windows, glass doors, and the many clerestory windows affording scenic vistas as you entertain your guests by the fireplace. Move out onto the large covered portal offering space to relax and take in the magnificent views. Preparing meals will be a delight in the exquisite Chef's kitchen boasting custom wood cabinetry, granite countertops, stainless steel appliances including gas cook top, commercial grade refrigerator, and dual oven. A breakfast bar with extra

storage and built-in wine rack adds to the appeal. For intimate gatherings, cozy up to the kiva fireplace in the informal dining room/hearth room off of the kitchen. The master bedroom invites you in with the tranquility of the mountain views and warmth from the fireplace, and access to your own private covered portal. The soothing environment continues into the spa-like master bathroom; custom wood vanities, granite countertops, luxurious jetted soaking tub, tiled walk-in shower, seating area, and walk-in closet. Other features are a second bedroom with ensuite bathroom and kiva fireplace, brick floors, and outdoor kitchen with fireplace. This wonderful retreat is located only 13 miles from the Santa Fe Plaza.





Contemporary Pueblo Style Home at Las Dos

- 2 Bedrooms
- Baths: 1 Full, 1 Three Quarter, 2 Half
- Main House 3116 Sq. Ft.
- 10.88 Acres
- Built in 1998
- Frame, Stucco, Poured Pumice Construction *
- Flat, Foam, Modified Bitumen Roof
- 2 Garage Spaces
- 4 Off Street Parking Spaces
- 2 Fireplaces
- Gas Cooking
- Propane, Radiant In Floor Heating
- Ductless Cooling
- Septic
- Private Well
- Internet: DSL, Satellite
- HOA Fees: HOA Fees \$900/yr: \$700 + a special assessment of \$200 additionally to build road fund.
- HOA Fees Cover: Road Maintenance
- Insulated Windows
- Xeriscaping
- Drip/Sprinkler System
- Security System

**Buyer to Verify*

