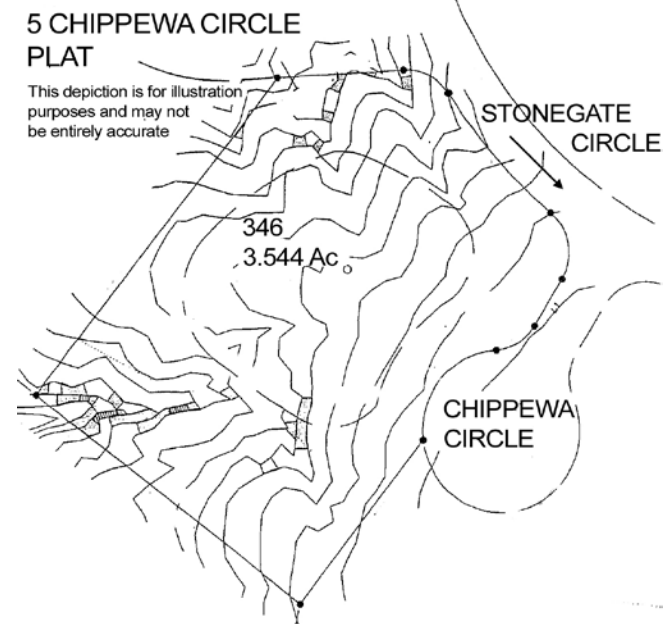
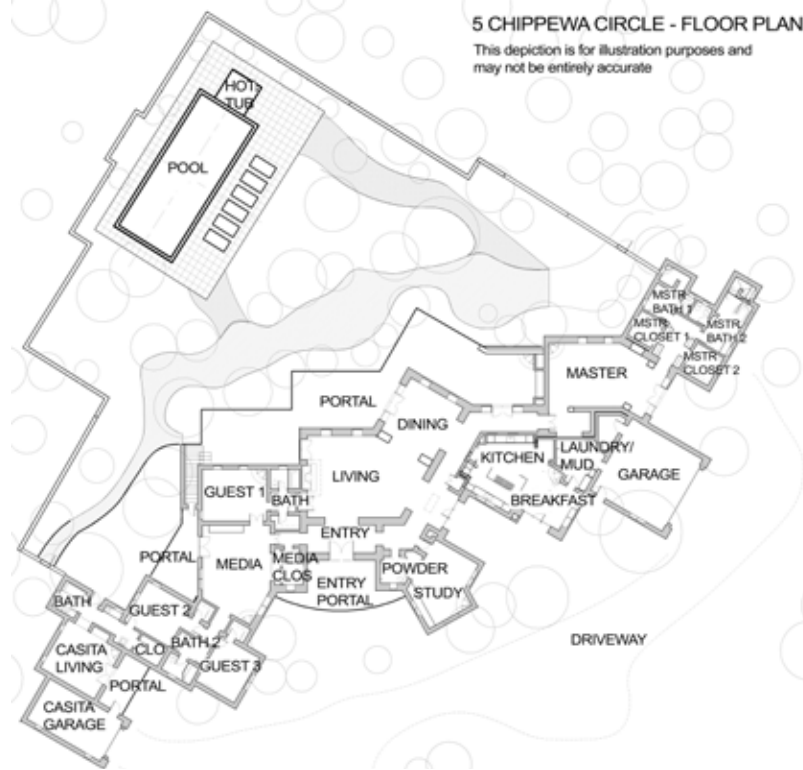


# 5 Chippewa Circle

5 Bedroom / 6 Bath / 8072 SF • \$4,250,000 • MLS# 201903730



# DARLENE STREIT

SANTA FE REAL ESTATE PROPERTY

505.920.8001 • dstreit@dstreit.com

417 E. Palace Avenue • Santa Fe NM 87501

# 5 Chippewa Circle

5 Bedroom / 6 Bath / 8072 SF  
\$4,250,000 • MLS# 201903730



## DARLENE STREIT

SANTA FE REAL ESTATE PROPERTY

505.920.8001 • dstreit@dstreit.com

417 E. Palace Avenue • Santa Fe NM 87501

[SantaFeRealEstateProperty.com](http://SantaFeRealEstateProperty.com)

## Suzanne Blas

505.795.1023 • SuzanneBlas@me.com

Renaissance Group of NM

[DreamSantaFe.com](http://DreamSantaFe.com)

Expansive 5 bedroom, 6 bath home on one level in the gated community of Las Campanas, on 3.5 acres. This home is a total remodel by Woods Construction, just completed. Elegantly appointed with diamond plaster walls, radiant heat stone floors. Natural light flows through skylights and clerestory windows. The living room, with high ceilings accented with crossed vigas and large fireplace flows into the dining area, surrounded by mountain and garden views. The meticulously designed chefs' kitchen features built-in Sub-Zero refrigerators, Wolf double ovens, large center island with 8 burner gas Wolf range, custom exhaust fan and pot filler. Taj white quartz counters, integrated sinks, food prep areas, walk-in pantry and kiva fireplace. Large private master

bedroom with fireplace, mountain views, solid walnut herringbone pattern wood floors, custom cedar lined walnut built-in cabinets flanked by matching walk-in closets. Two luxurious master ensuite bathrooms, one furnished with a modern soaking tub, walk-in shower, steam room, oversized custom dual sink vanity, towel warmers, all complemented by elegant tile and stone floors. Media room will immerse you in a cinematic experience. Outdoor living offers an easy-access grand portal, fireplace and grilling area, contemporary heated swimming pool and spa surrounded by stone patio, and a roof top deck with 360-degree views of the mountains and golf course. A short 10-mile commute to the heart and history that is the Santa Fe Plaza.

Sotheby's International Realty and the Sotheby's International Realty logo are registered (or unregistered) service marks used with permission. Operated by Sotheby's International Realty, Inc. Real estate agents affiliated with Sotheby's International Realty, Inc. are independent contractor sales associates and are not employees of Sotheby's International Realty, Inc.

# Sotheby's

INTERNATIONAL REALTY

326 Grant Avenue • Santa Fe, NM 87501 • 505-988-2533



Renaissance Group of NM • 505.795.1023

This material is based on information which we consider reliable, but because it has been supplied by third parties, we cannot represent that it is accurate or complete, and it should not be relied upon as such. This offering is subject to errors, omissions, change of price, or withdrawal without notice. EaQUAL HOUSING OPPORTUNITY.







## Expansive Single Level Home in Las Campanas

- 5 Bedrooms
- 6 Full Baths
- Main House 7432 Sq. Ft.
- Guest House 640 Sq. Ft.
- 3.54 Acres
- Built in 2002
- Pumice/Poured, Stucco Construction \*
- Flat, Foam Roof
- 3 Garage Spaces
- 7 Fireplaces
- Stone, Wood Floors
- Gas Cooking
- Forced Air, Gas, Hot Water, Radiant In Floor Heating
- Refrigerator, Central Cooling
- Community Sewer
- Community Water
- Internet: Cable, DSL
- HOA Fees: \$671.50 Per Quarter
- HOA Fees Cover: Community Area & Road Maintenance, Security
- Hot Tub/Spa
- Insulated Windows
- Landscaped
- Pool
- Drip/Sprinkler System
- Sauna
- Security System
- Water Purification & Softener
- Recirc Pump for Hot Water

*\*Buyer to Verify*

