

# 12 B Camino Barranca

3 Bedroom / 3 Bath / 2497 SF • \$760,000 • MLS# 201903159

# DARLENE STREIT

SANTA FE REAL ESTATE PROPERTY

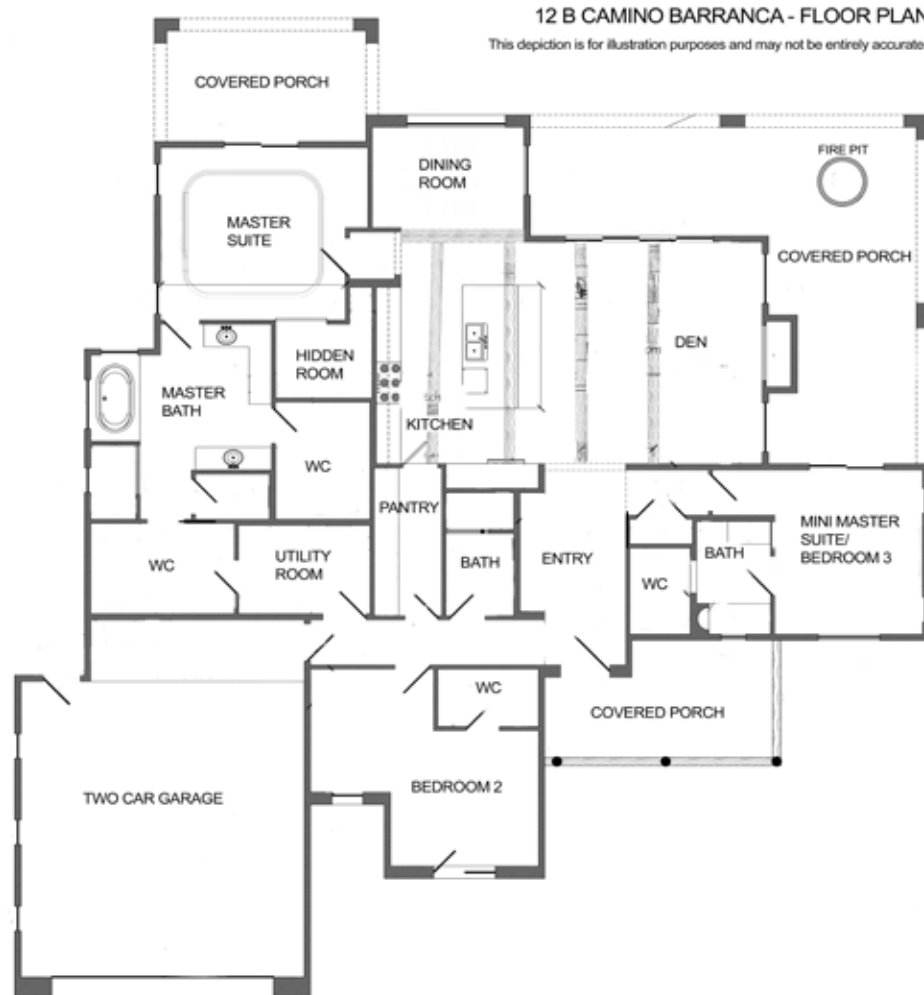
505.920.8001 • dstreit@dstreit.com

417 E. Palace Avenue • Santa Fe NM 87501

# 12 B Camino Barranca

3 Bedroom / 3 Bath / 2497 SF

\$760,000 • MLS# 201903159



Clean lines mix seamlessly with warm hues and elegant accents in this single level, soft contemporary 3 bedroom, 3 bath custom home built in 2016 in Aldea. Enter through the distinctive wood double doors inset with horizontal frosted glass and into the open concept living area with high tray ceiling, oversized sliding glass doors and a double-sided fireplace between the living space and patio outside. The cook's kitchen has sleek stainless-steel appliances, stylish backsplash, center island with storage and seating. With an adjacent dining area boasting wonderful views, the kitchen/living/dining areas will be a place to gather, making entertaining a delight. A butler's pantry and wine refrigerator complete the setting. In the master suite, the spacious bedroom with a fireplace,

dual walk-in closets and a private patio, has a luxurious bathroom with dual vanities, roomy walk-in shower and spa tub with custom tile accents. A second "mini Master" bedroom, separate from the others, opens to the front courtyard allowing easy access and privacy for guests. A third bedroom could be an office or study. Tile floor throughout with radiant in floor heat/AC. Situated on one of the best lots in Aldea to take in the sweeping views of the Sangre de Cristo and Ortiz mountains, you'll enjoy sunlit days and starry nights from the many outdoor spaces including the front courtyard or the wrap-around covered portal. Just minutes to downtown Santa Fe shopping, restaurants and entertainment.



## DARLENE STREIT

SANTA FE REAL ESTATE PROPERTY

505.920.8001 • dstreit@dstreit.com

417 E. Palace Avenue • Santa Fe NM 87501



LISTINGS

Scan these QR Codes to view Darlene's listings online or to download our mobile app.

OR text DSTREIT to 87778, or go to: [m.sir.com/dstreit](http://m.sir.com/dstreit)



APP

To view additional photos of this property visit: [SantaFeRealEstateProperty.com](http://SantaFeRealEstateProperty.com)

Sotheby's International Realty and the Sotheby's International Realty logo are registered (or unregistered) service marks used with permission. Operated by Sotheby's International Realty, Inc. Real estate agents affiliated with Sotheby's International Realty, Inc. are independent contractor sales associates and are not employees of Sotheby's International Realty, Inc.

This material is based on information which we consider reliable, but because it has been supplied by third parties, we cannot represent that it is accurate or complete, and it should not be relied upon as such. This offering is subject to errors, omissions, change of price, or withdrawal without notice. EQUAL HOUSING OPPORTUNITY.

## Sotheby's

INTERNATIONAL REALTY

326 Grant Ave, Santa Fe, NM 87501

505-988-2533







## Clean Lines, Elegant Accents in Aldea

- 3 Bedrooms
- Baths: 2 Full, 1 Three Quarter
- Main House 2497 Sq. Ft.
- 0.41 Acre
- Built in 2016
- Frame, Stucco Construction \*
- Flat Roof
- 2 Garage Spaces
- 2 Fireplaces
- Gas Cooking
- Radiant In Floor Heating
- Radiant In Floor Cooling
- Community Sewer
- County Water
- Internet: Cable, DSL, Satellite
- HOA Fees: \$448 Per Quarter
- HOA Fees Cover: Community Area & Road Maintenance, Recreational Facilities
- Insulated Windows
- Private Road Maintenance Agreement
- Landscaped
- Satellite TV
- Drip/Sprinkler System
- Butler's Pantry
- Wine Cooler

*\*Buyer to Verify*

