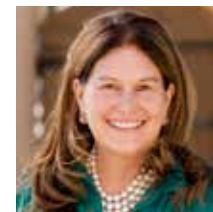


1000 Camino Pinones

5 Bedroom / 4 Bath / 5200 SF ▪ \$3,375,000 ▪ MLS# 201902505



DARLENE STREIT

SANTA FE REAL ESTATE PROPERTY

505.920.8001 ▪ dstreit@dstreit.com
417 E. Palace Avenue ▪ Santa Fe NM 87501



LISTINGS

Scan these QR Codes to view Darlene's listings online or to download our mobile app.

OR text DSTREIT to 87778, or go to: m.sir.com/dstreit



APP

To view additional photos of this property visit: SantaFeRealEstateProperty.com

Sotheby's International Realty and the Sotheby's International Realty logo are registered (or unregistered) service marks used with permission. Operated by Sotheby's International Realty, Inc. Real estate agents affiliated with Sotheby's International Realty, Inc. are independent contractor sales associates and are not employees of Sotheby's International Realty, Inc.

This material is based on information which we consider reliable, but because it has been supplied by third parties, we cannot represent that it is accurate or complete, and it should not be relied upon as such. This offering is subject to errors, omissions, change of price, or withdrawal without notice. EQUAL HOUSING OPPORTUNITY.

Sotheby's
INTERNATIONAL REALTY

326 Grant Ave, Santa Fe, NM 87501
505-988-2533

DARLENE STREIT

SANTA FE REAL ESTATE PROPERTY

505.920.8001 ▪ dstreit@dstreit.com
417 E. Palace Avenue ▪ Santa Fe NM 87501

1000 Camino Pinones

5 Bedroom / 4 Bath / 5200 SF

\$3,375,000 ▪ MLS# 201902505



Situated on over 3 acres in a prime location adjacent to Museum Hill and the Botanical Gardens, this gated compound includes an elegantly-appointed 4 bedroom 3 bath pueblo-style contemporary home along with a charming detached 1 bedroom 1 bath guest house, a library/office and a studio/gym. The pool and covered cabana with fireplace offer outdoor living and entertaining space with views of the Sangre de Cristo mountains and spectacular sunsets. The 1950s property was completely renovated by renowned architect Robert Glazier in 2012 creating an open floor plan and indoor/outdoor living which takes advantage of the views and abundant natural light. Features include concrete

floors with radiant heating and cooling, plaster walls, 5 fireplaces, a sleek open kitchen with walnut cabinetry and Wolf and Subzero appliances, an upstairs den with 360 views, a master suite with fireplace, stone soaking tub and private courtyard with portale, a second master suite, two-car garage, basement for storage/wine cellar and private well. The professionally landscaped gardens include stone patios, fountains, a grapevine-covered pergola, custom iron gates and fencing and sprinkler/drip irrigation. Featured in Milieu Magazine, this home offers the feeling of being in the country with privacy and space to enjoy the serenity of Santa Fe just minutes from Canyon Road and the Plaza.





Gated Compound Adjacent to Museum Hill

- 5 Bedrooms
- Baths: 4 Full
- Main House 4211 Sq. Ft.
- Guest House 711 Sq. Ft.
- Studio 278 Sq. Ft.
- 3.25 Acres
- Built in 1952
- Adobe and possibly other materials Construction *
- Flat, Tar & Gravel Roof
- 2 Garage Spaces
- 8 Off Street Parking Spaces
- 5 Fireplaces
- Gas Cooking
- Gas, Radiant In Floor, Baseboard (Electric) Heating
- Radiant In Floor, Ductless Cooling
- Septic

- Private Well
- Internet: Cable
- Insulated Windows
- Drip/Sprinkler System
- Outdoor Pool
- Landscaped
- Wine Cellar

**Buyer to Verify*

