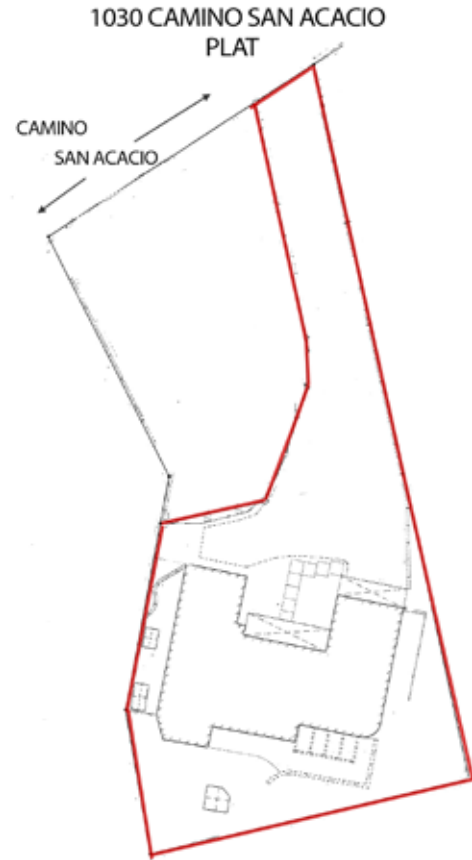


1030 Camino San Acacio

3 Bedroom / 2 Bath / 2650 SF ▪ \$1,095,000 ▪ MLS# 201902433



This depiction is for illustration purposes and may not be entirely accurate



DARLENE STREIT

SANTA FE REAL ESTATE PROPERTY

505.920.8001 ▪ dstreit@dstreit.com
417 E. Palace Avenue ▪ Santa Fe NM 87501



LISTINGS

Scan these QR Codes to view
Darlene's listings online or to
download our mobile app.

OR text DSTREIT to 87778,
or go to: m.sir.com/dstreit



APP

To view additional photos of this property visit: SantaFeRealEstateProperty.com

Sotheby's International Realty and the Sotheby's International Realty logo are registered (or unregistered) service marks used with permission. Operated by Sotheby's International Realty, Inc. Real estate agents affiliated with Sotheby's International Realty, Inc. are independent contractor sales associates and are not employees of Sotheby's International Realty, Inc.

This material is based on information which we consider reliable, but because it has been supplied by third parties, we cannot represent that it is accurate or complete, and it should not be relied upon as such. This offering is subject to errors, omissions, change of price, or withdrawal without notice. EQUAL HOUSING OPPORTUNITY.

Sotheby's

INTERNATIONAL REALTY

326 Grant Ave, Santa Fe, NM 87501
505-988-2533

DARLENE STREIT

SANTA FE REAL ESTATE PROPERTY

505.920.8001 ▪ dstreit@dstreit.com
417 E. Palace Avenue ▪ Santa Fe NM 87501

1030 Camino San Acacio

3 Bedroom / 2 Bath / 2650 SF

\$1,095,000 ▪ MLS# 201902433



Casa Siempre is a Hap Crawford-designed territorial adobe gem perfectly sited on a limestone hill two blocks south of Canyon Road in the Historic Eastside to give rare views of both the eastern Sangre de Cristo and western Jemez mountains for sunrise and sunset viewing; in addition a forested preserve in the back affords wonderful indoor-outdoor living surrounded by pinon trees, raised-bed planting areas, flagstone-paved entertaining areas with grilling station. Designed with large windows and 8 skylights to maximize natural light and with beamed ceilings, the 3 bedroom, 2 bath home has two wings, a master suite with a large bedroom, bathroom and study and a public wing with living room/balcony to the mountain views and connected kitchen with double set

of large French doors opening to the outdoor lounging/entertaining spaces. Extensively updated, in custom Spanish-themed colored tile work, by Killman Design, the kitchen offers custom cabinetry with Sub Zero/Wolf/Bosch appliances and the master bathroom features jewelry display closet, walk-in shower, whirlpool bathtub, antique-style vanity, and handcarved mirror. Two large guest bedrooms, accented with colors reflected throughout the home, have outdoor entrances. Extras include apricot/peach/apple trees, two kiva fireplaces, a lower level 2 car garage, adobe dog house, security system and sprinkler/drip irrigation. Minutes to Museum Hill, St John's, Canyon Road and the Plaza. Truly one of a kind on the Eastside.





Casa Siempre, Territorial Style Gem

- 3 Bedrooms
- Baths: 1 Full, 1 Three Quarter
- 2650 Sq. Ft.
- 0.27 Acres
- Built in 1992
- Adobe and possibly other materials, Construction *
- Flat, Modified Bitumen Roof
- 2 Garage Spaces
- 6 Off Street Parking Spaces
- 2 Fireplaces
- Tile, Wood Floors
- Gas & Electric Cooking
- Gas/Electric Baseboard, Radiant In Floor Heating
- City Sewer
- City Water
- Internet: Cable, DSL
- Insulated Windows
- Landscaped
- Drip/Sprinkler System
- Security System

**Buyer to Verify*

