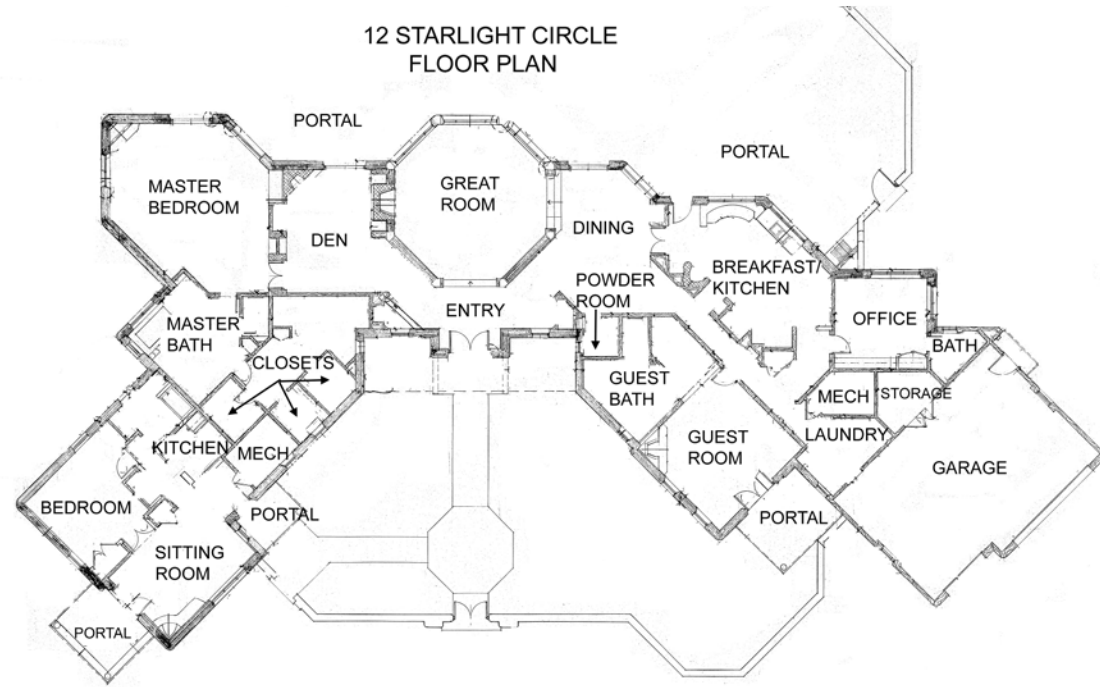
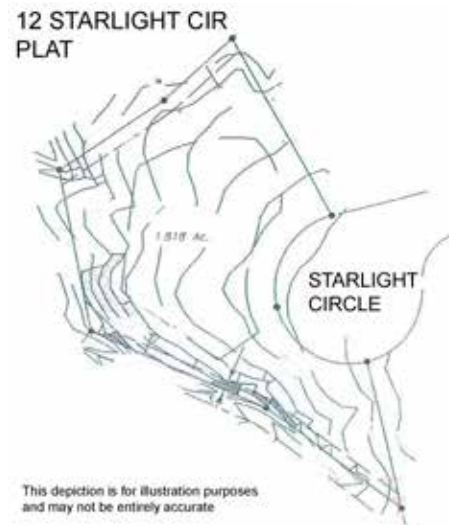


12 Starlight Circle

4 Bedroom / 5 Bath / 5480 SF • \$1,300,000 • MLS# 201901047



This depiction is for illustration purposes and may not be entirely accurate



This depiction is for illustration purposes and may not be entirely accurate

DARLENE STREIT

SANTA FE REAL ESTATE PROPERTY

505.920.8001 • dstreit@dstreit.com

417 E. Palace Avenue • Santa Fe NM 87501

12 Starlight Circle

4 Bedroom / 5 Bath / 5480 SF

\$1,300,000 • MLS# 201901047



This elegant 4 bedroom 4.5 bath custom home and guest house has been strategically sited and designed to capture vistas of the 11th green and lake of the Jack Nicklaus Signature Sunrise Golf Course as well as the majestic mountains and gently rolling hills. Luxurious and spacious living areas abound inside and out. The heart of the home is a large octagonal great room with wood ceilings, a grand fireplace and plentiful windows and transoms for light and views. Circling two sides of the great room is a wide hall perfect for art. It flows into the formal dining area and gourmet kitchen with beautiful cherry wood cabinets, well-appointed appliances, center island, and cozy breakfast nook with banco seating and

kiva. The sizable master suite with its sumptuous bath, closet and dressing area occupies one wing of this home. Next to the master suite is a library/den with a built-in entertainment center and patio doors. Two additional bedrooms, one of which can be an office or studio, plus ensuite bathrooms are located in the opposite wing for your guests' privacy. The guest house, with separate entrance through the courtyard, has one bedroom, one bath, and kitchen. Special features include handcrafted and antique wood doors and finishes, sculpted walls, slate flooring, ornate tile work, wet bar, wrap around portals, 2 outdoor fireplaces and landscaping. Estate living on a little more than 1.8 acres in desirable Las Campanas.



DARLENE STREIT

SANTA FE REAL ESTATE PROPERTY

505.920.8001 • dstreit@dstreit.com

417 E. Palace Avenue • Santa Fe NM 87501



LISTINGS

Scan these QR Codes to view Darlene's listings online or to download our mobile app.

OR text DSTREIT to 87778, or go to: m.sir.com/dstreit



APP

To view additional photos of this property visit: SantaFeRealEstateProperty.com

Sotheby's International Realty and the Sotheby's International Realty logo are registered (or unregistered) service marks used with permission. Operated by Sotheby's International Realty, Inc. Real estate agents affiliated with Sotheby's International Realty, Inc. are independent contractor sales associates and are not employees of Sotheby's International Realty, Inc.

This material is based on information which we consider reliable, but because it has been supplied by third parties, we cannot represent that it is accurate or complete, and it should not be relied upon as such. This offering is subject to errors, omissions, change of price, or withdrawal without notice. EQUAL HOUSING OPPORTUNITY.

Sotheby's

INTERNATIONAL REALTY

326 Grant Ave, Santa Fe, NM 87501

505-988-2533





Home & Guest House on 11th Green in Las Campanas

- 4 Bedrooms
- Baths: 4 Full, 1 Half
- Main House 4731 Sq. Ft.
- Guest House 749 Sq. Ft.
- 1.81 Acres
- Built in 1997
- Pumice, Poured Construction *
- Flat Roof
- 8 Fireplaces
- 3 Garage Spaces
- Gas Cooking
- Forced Air, Gas, Radiant Heating
- Evaporative Central Cooling
- Community Sewer
- Community Water
- Internet: Cable
- HOA Fees: \$671.50 Per Quarter
- HOA Fees Cover: Community Area & Road Maintenance, Security
- Hot Tub/Spa
- Landscaped
- Security System
- Water Softener

**Buyer to Verify*

