

# 300 Tano Rd

6 Bedroom / 5 Bath / 5,375 SF • \$920,000 • MLS# 201900247

# DARLENE STREIT

SANTA FE REAL ESTATE PROPERTY

505.920.8001 • dstreit@dstreit.com

417 E. Palace Avenue • Santa Fe NM 87501

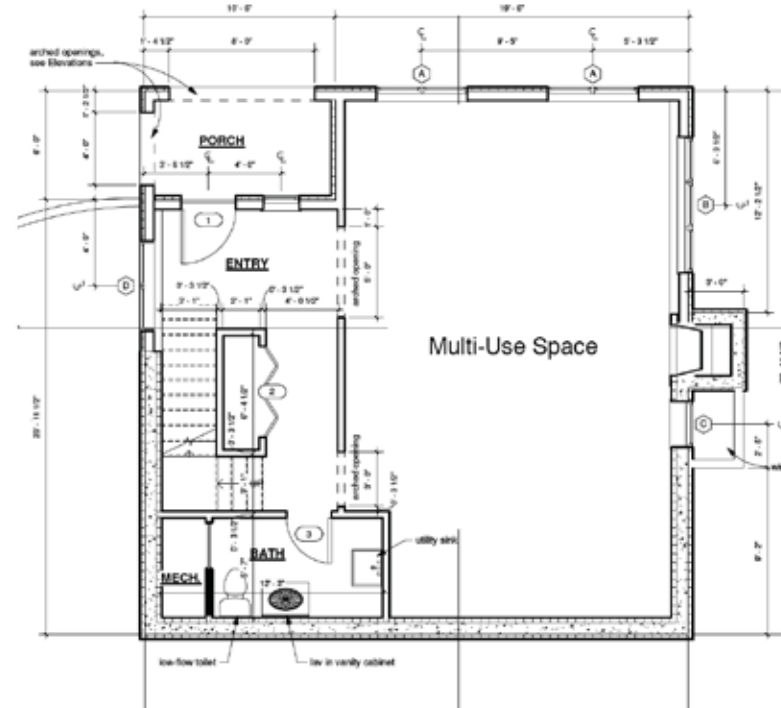
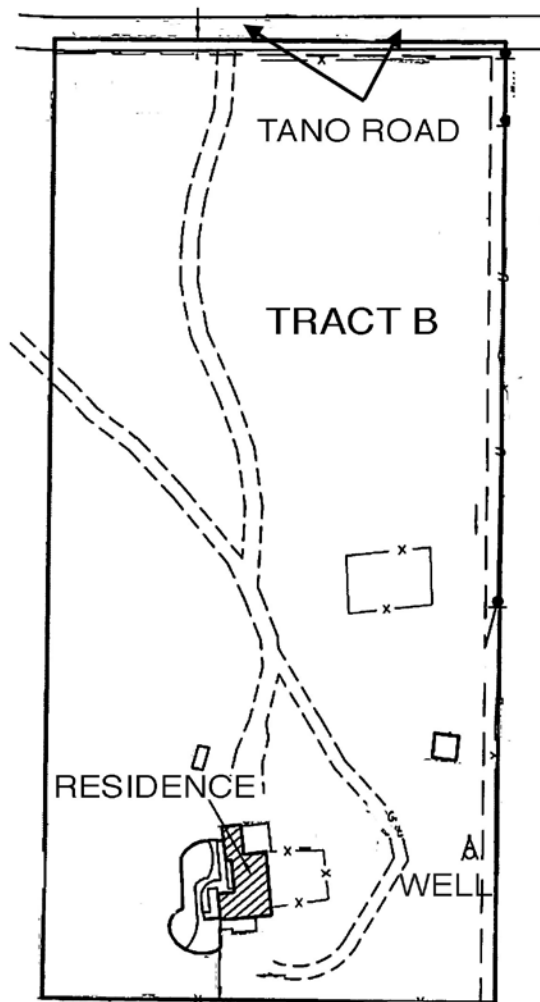
# 300 Tano Rd

6 Bedroom / 5 Bath / 5,375 SF

\$920,000 • MLS# 201900247

300 TANO RD - PLAT

GUEST HOUSE



This depiction is for illustration purposes and may not be entirely accurate



This stunning five-level 3 bedroom 2 bath artist retreat with a separate guest house has been freshly renovated to merge post modern style, easy comfort and traditional charm. Enjoy spectacular sunrises, sunsets and star gazing on the 5th level of the house while enjoying the warmth of a large fireplace. On the fourth level is the kitchen with built in refrigerator, all wood cabinets and 2 windows with views plus a dining area with its own kiva fireplace and private deck. The third level houses the master bedroom and opens to the back deck for complete privacy while the second level offers two additional bedrooms and a full bath with a separate laundry room. A recent addition is a private in-law quarters with its own entrance. The large multi-purpose first level could be

used as a media room, office or studio. An architecturally designed detached 1300 square foot guest house with 3 bedrooms and 3 baths provides utmost separation for guests or added space for work or creative pursuits. Special design touches include river rock lined showers, unique tile accents and the warmth of wood textures and finishes throughout. Only 15 minutes to this historic Santa Fe Plaza, this home has a lovely courtyard and plenty of parking. Offering the ambiance of country living on a 4.7 acre lot this property allows for horse facilities and is close to the La Tierra Trail system which is 25 miles of pristine hiking/biking trails. An excellent rental property opportunity or vacation home.



## DARLENE STREIT

SANTA FE REAL ESTATE PROPERTY

505.920.8001 • dstreit@dstreit.com

417 E. Palace Avenue • Santa Fe NM 87501



LISTINGS

Scan these QR Codes to view Darlene's listings online or to download our mobile app.

OR text DSTREIT to 87778, or go to: [m.sir.com/dstreit](http://m.sir.com/dstreit)



APP

To view additional photos of this property visit: [SantaFeRealEstateProperty.com](http://SantaFeRealEstateProperty.com)

Sotheby's International Realty and the Sotheby's International Realty logo are registered (or unregistered) service marks used with permission. Operated by Sotheby's International Realty, Inc. Real estate agents affiliated with Sotheby's International Realty, Inc. are independent contractor sales associates and are not employees of Sotheby's International Realty, Inc.

This material is based on information which we consider reliable, but because it has been supplied by third parties, we cannot represent that it is accurate or complete, and it should not be relied upon as such. This offering is subject to errors, omissions, change of price, or withdrawal without notice. EQUAL HOUSING OPPORTUNITY.

## Sotheby's

INTERNATIONAL REALTY

326 Grant Ave, Santa Fe, NM 87501

505-988-2533







## Stunning Artist Retreat with Guest House

- 6 Bedrooms
- Baths: 2 Full, 3 Three Quarter
- Main House 4,043 Sq. Ft.
- Guest House 1,332 Sq. Ft.
- 4.77 Acres
- Built in 1976
- Adobe and possibly other materials, Frame, Stucco Construction \*
- 3 Fireplaces
- Recent in-law quarters addition with own entrance
- Flat, Tar & Gravel Roof
- Tile, Wood Floors
- Gas & Electric Cooking
- Propane, Hot Water, Wood Stove, Baseboard (Hot Water), Ductless (Mini Split) Heating
- Heat Pump Cooling
- Septic
- Private Well
- Internet: DSL (CenturyLink)
- Landscaped
- Plenty of parking
- Property has been used as a short term rental. Rental data available upon request.

*\*Buyer to Verify*

