

# 1544 Kachina Ridge Drive

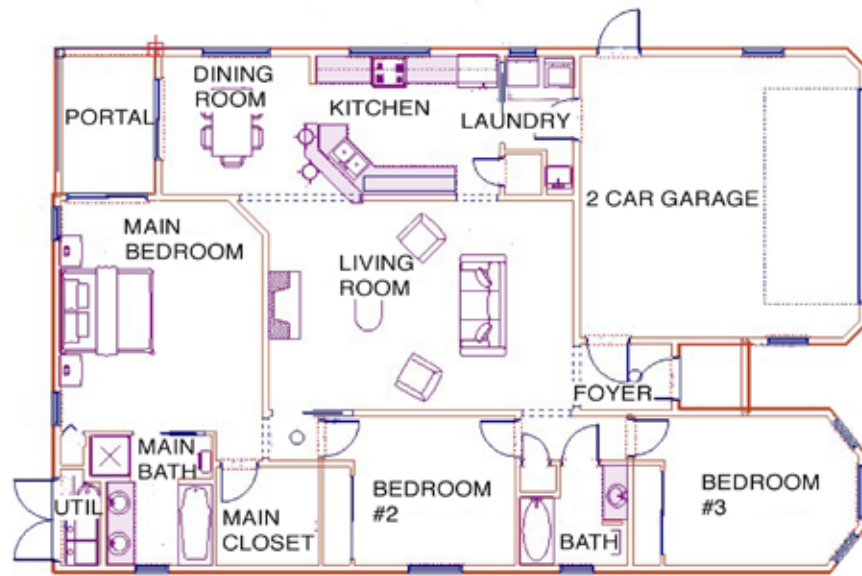
3 Bedroom / 2 Bath / 1700 SF • \$429,000 • MLS# 201900131

## THE VIRGINIAN

DESIGNER/BUILDER, INC.

Lot 73 1544 Kachina Ridge Dr.

Tesuque Model



Heated: 1700 Square Feet  
 Garage: 501 Square Feet  
 Total: 2201 Square Feet  
 Portals: 103 Square Feet

This depiction is for illustration purposes and may not be entirely accurate



This depiction is for illustration purposes and may not be entirely accurate

# DARLENE STREIT

SANTA FE REAL ESTATE PROPERTY

505.920.8001 • dstreit@dstreit.com

417 E. Palace Avenue • Santa Fe NM 87501

# 1544 Kachina Ridge Drive

3 Bedroom / 2 Bath / 1700 SF

\$429,000 • MLS# 201900131



Enjoy the outdoors and energy savings in this new, energy-efficient home, located near a greenbelt and trails that have magnificent mountain views. Being built by Master Green Builder Arch Sproul in the Kachina Ridge subdivision, this 3 bedroom, 2 bath custom home boasts super-insulated walls and ceilings, a high-efficiency boiler, air conditioning, on demand hot water, and a HERS 60 rating. Convenient single level living and an open floor plan make this home ideal for entertaining and relaxing. The light-filled living room features a high-efficiency fireplace with decorative brick accents and lovely nichos. The living room flows easily into the well-designed kitchen, which has solid wood cabinets, beautiful granite countertops, a double stainless sink and plenty of

storage. An adjacent dining area opens to an outdoor patio for alfresco dining. The spacious master suite with walk-in closet, nearby laundry room and access to an attractive outdoor portal is thoughtfully separated from the guest bedrooms. The two bedrooms and bath feature wood and tiled floors, skylights and modern fixtures. One bedroom could function easily as an office. An attached 2 car garage, landscaping, sprinkler/drip system, vigas or beams, plus three ceiling windows on both sides of the living room, round out this home's features. Close to schools, shopping, Meow Wolf, theaters, brew pubs and restaurants, this outstanding energy-efficient custom home is only 20 minutes from the historic Santa Fe Plaza.



## DARLENE STREIT

SANTA FE REAL ESTATE PROPERTY

505.920.8001 • dstreit@dstreit.com

417 E. Palace Avenue • Santa Fe NM 87501



LISTINGS

Scan these QR Codes to view Darlene's listings online or to download our mobile app.

OR text DSTREIT to 87778, or go to: [m.sir.com/dstreit](http://m.sir.com/dstreit)



APP

To view additional photos of this property visit: [SantaFeRealEstateProperty.com](http://SantaFeRealEstateProperty.com)

Sotheby's International Realty and the Sotheby's International Realty logo are registered (or unregistered) service marks used with permission. Operated by Sotheby's International Realty, Inc. Real estate agents affiliated with Sotheby's International Realty, Inc. are independent contractor sales associates and are not employees of Sotheby's International Realty, Inc.

This material is based on information which we consider reliable, but because it has been supplied by third parties, we cannot represent that it is accurate or complete, and it should not be relied upon as such. This offering is subject to errors, omissions, change of price, or withdrawal without notice. EQUAL HOUSING OPPORTUNITY.

## Sotheby's

INTERNATIONAL REALTY

326 Grant Ave, Santa Fe, NM 87501

505-988-2533





## Energy Saving Features, Prime Location

- 3 Bedrooms
- Baths: 2 Full
- 1700 Sq. Ft.
- 0.134 Acres
- Under Construction
- Frame, Stucco, Permanent Foundation Construction \*
- Flat Roof
- 2 Garage Spaces
- 1 Fireplace
- Gas Cooking
- Forced Air, Gas Heating
- Refrigerator Cooling
- City Sewer
- City Water
- Internet: Cable, DSL
- HOA Fees: \$100 Per Year
- Insulated Windows
- Landscaped
- Drip/Sprinkler System
- EnergyStar Appliances
- Low Flow Fixtures
- Recirc Pump for for Hot Water
- Xeriscaping

*\*Buyer to Verify*

